



RESTRICTING SPACE IN THE OPT AREA C MAP

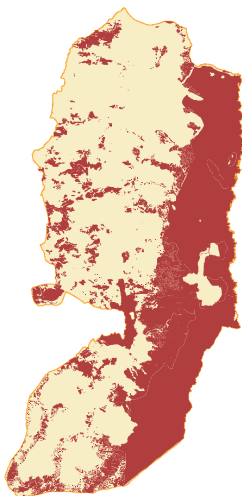
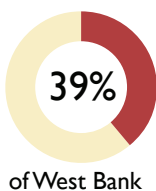
DECEMBER 2011

KEY FACTS

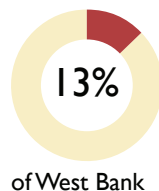
- Over 60 percent of the West Bank is considered Area C, where Israel retains control over planning and zoning among other issues.
- An estimated 150,000 Palestinians live in Area C, including 27,500 Bedouin and other herders.
- More than 20% of communities in Area C have extremely limited access to health services.
- Water consumption dips to 20 litres/capita/day (l/c/d) in communities without water infrastructure, one-fifth of the World Health Organisation's recommendation.
- Communities depending on tankered water pay up to 400% more for every liter than those connected to the water network.
- 70% of Area C is off-limits to Palestinian construction; 29% is heavily restricted.
- Less than 1% of Area C has been planned for Palestinian development by the Israeli Civil Administration.
- 560 Palestinian-owned structures were demolished, including 200 residential structures and 46 rainwater cisterns and pools, by the Israeli authorities in Area C in 2011.
- 1,006 people, including 565 children, lost their homes in 2011, over twice as many as in 2010.
- Over 3,000 demolition orders are outstanding, including 18 targeting schools.
- The planned expansion area of the around 135 Israeli settlements in Area C is 9 times larger than their built-up area. (B'Tselem).
- Approximately 300,000 settlers currently live in Area C.

For more information, please refer to index on page 32.

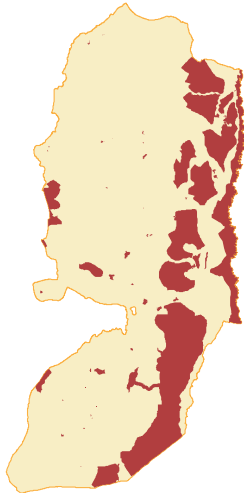
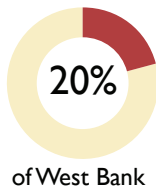
Settlement Areas including Local and Regional Councils



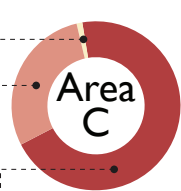
Nature Reserves Israeli & "Wye River Memorandum"



Closed Military Areas including "firing" zones

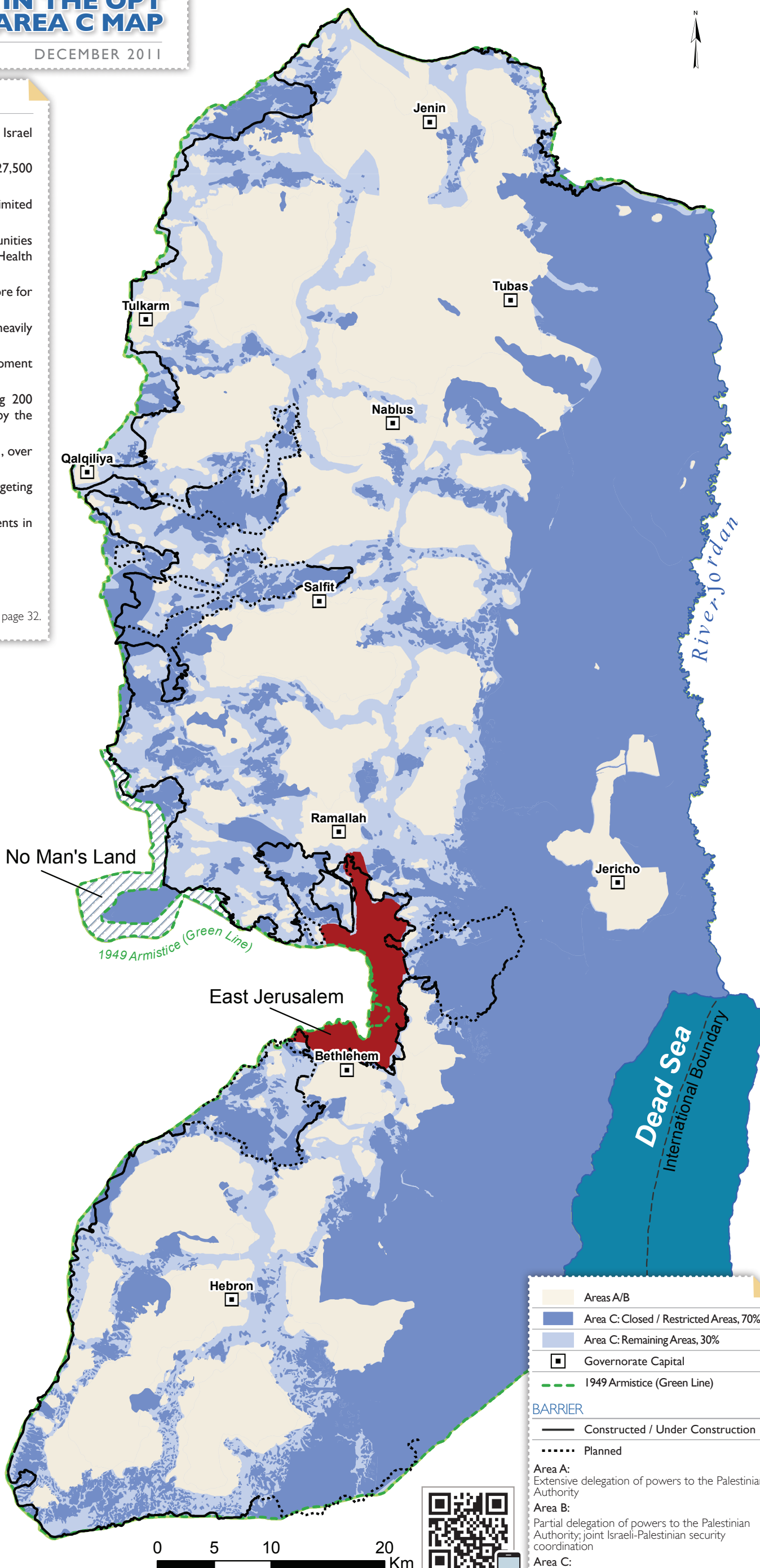


Zoning in Area C



- 70% Construction Prohibited
- 29% Construction Heavily Restricted
- 1% Planned for Palestinian Development

* Under the Wye River Memorandum of 1998, land reserves, amounting to approximately three percent of the West Bank, were supposed to be handed over to the PA to be set aside as a Green Area/Nature Reserve. To date, the PA has not been allowed to utilize this area.



Areas A/B
Area C: Closed / Restricted Areas, 70%
Area C: Remaining Areas, 30%
Governorate Capital
1949 Armistice (Green Line)
BARRIER
Constructed / Under Construction
Planned
Area A: Extensive delegation of powers to the Palestinian Authority
Area B: Partial delegation of powers to the Palestinian Authority; joint Israeli-Palestinian security coordination
Area C: Very limited delegation of powers to the Palestinian Authority