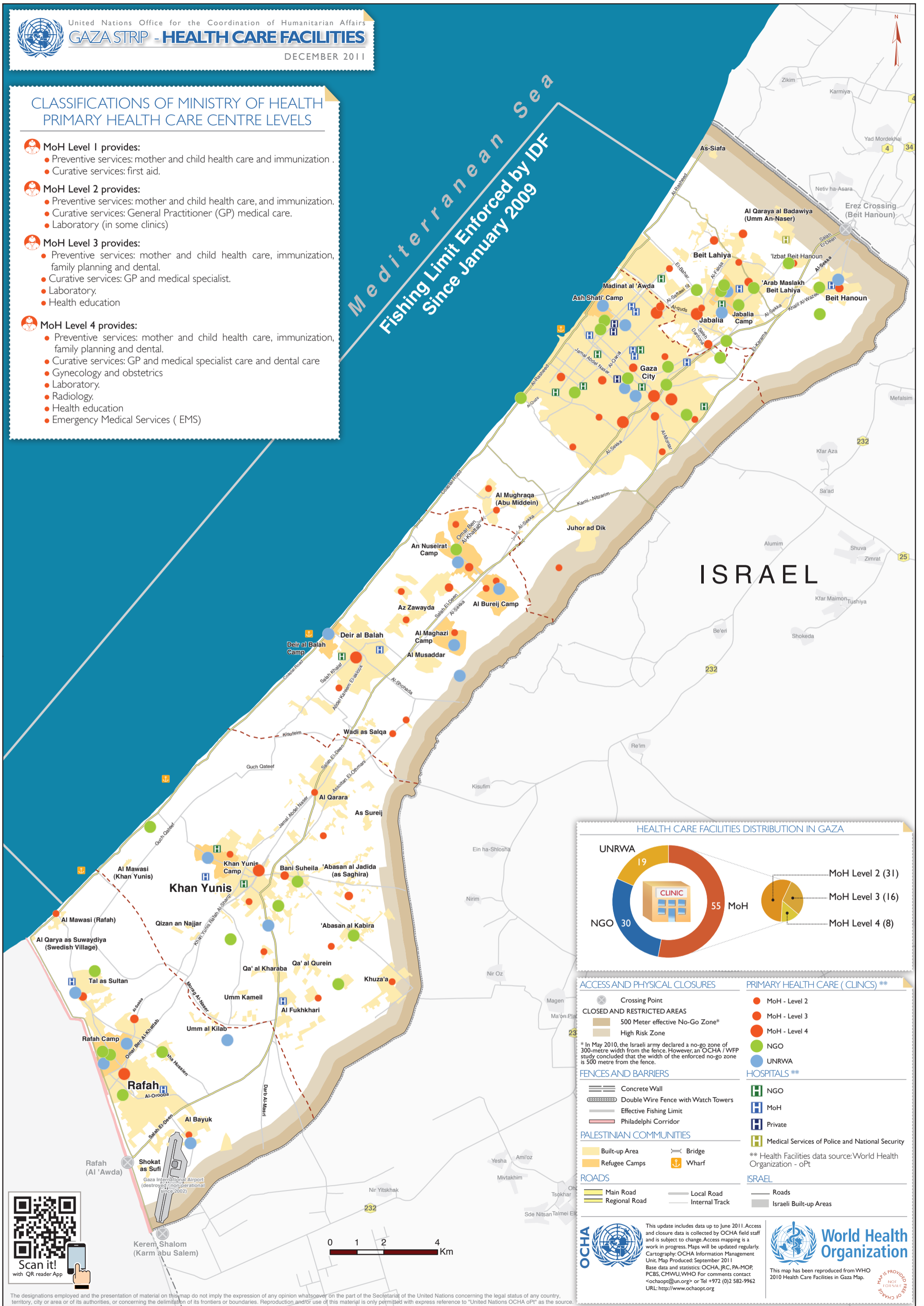




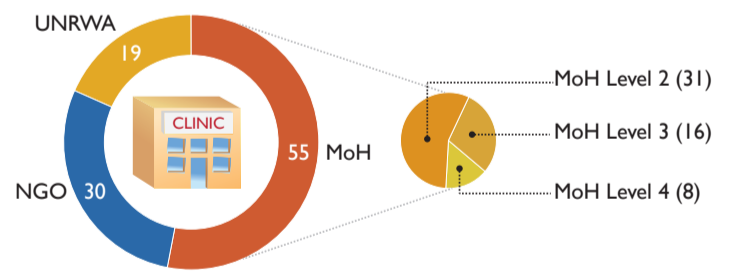
CLASSIFICATIONS OF MINISTRY OF HEALTH PRIMARY HEALTH CARE CENTRE LEVELS

- MoH Level 1 provides:**
 - Preventive services: mother and child health care and immunization.
 - Curative services: first aid.
- MoH Level 2 provides:**
 - Preventive services: mother and child health care, and immunization.
 - Curative services: General Practitioner (GP) medical care.
 - Laboratory (in some clinics)
- MoH Level 3 provides:**
 - Preventive services: mother and child health care, immunization, family planning and dental.
 - Curative services: GP and medical specialist.
 - Laboratory.
 - Health education
- MoH Level 4 provides:**
 - Preventive services: mother and child health care, immunization, family planning and dental.
 - Curative services: GP and medical specialist care and dental care
 - Gynecology and obstetrics
 - Laboratory.
 - Radiology.
 - Health education
 - Emergency Medical Services (EMS)

Mediterranean Sea
Fishing Limit Enforced by IDF
Since January 2009



HEALTH CARE FACILITIES DISTRIBUTION IN GAZA



ACCESS AND PHYSICAL CLOSURES

- Crossing Point
- CLOSED AND RESTRICTED AREAS**
 - 500 Meter effective No-Go Zone*
 - High Risk Zone
- FENCES AND BARRIERS**
 - Concrete Wall
 - Double Wire Fence with Watch Towers
 - Effective Fishing Limit
 - Philadelphi Corridor
- PALESTINIAN COMMUNITIES**
 - Built-up Area
 - Refugee Camps
 - Bridge
 - Wharf
- ROADS**
 - Main Road
 - Regional Road
 - Local Road
 - Internal Track
- PRIMARY HEALTH CARE (CLINICS)****
 - MoH - Level 2
 - MoH - Level 3
 - MoH - Level 4
 - NGO
 - UNRWA
- HOSPITALS****
 - NGO
 - MoH
 - Private
 - Medical Services of Police and National Security
- ISRAELI BUILT-UP AREAS**
 - Roads
 - Israeli Built-up Areas

* In May 2010, the Israeli army declared a no-go zone of 300-metre width from the fence. However, an OCHA / WFP study concluded that the width of the enforced no-go zone is 500 metre from the fence.

** Health Facilities data source: World Health Organization - oPt



This update includes data up to June 2011. Access and closure data is collected by OCHA field staff and is subject to change. Access mapping is a work in progress. Maps will be updated regularly. Cartography: OCHA Information Management Unit. Map Produced: September 2011. Base data and statistics: OCHA, JRC, PA-MOP, PCBS, CMWU, WHO. For comments contact <ochaopt@un.org> or Tel +972 (0)2 582-9962 URL: <http://www.ochaopt.org>

This map has been reproduced from WHO 2010 Health Care Facilities in Gaza Map. **MAP IS PROVIDED FOR CHANGE NOT FOR SALE**

The designations employed and the presentation of material on this map do not imply the expression of any opinion whatsoever on the part of the Secretariat of the United Nations concerning the legal status of any country, territory, city or area or of its authorities, or concerning the delimitation of its frontiers or boundaries. Reproduction and/or use of this material is only permitted with express reference to "United Nations OCHA oPt" as the source.