



United Nations Office for the Coordination of Humanitarian Affairs IMPACT OF THE CONFLICT ON PALESTINIAN CHILDREN

JULY 2010 - JUNE 2011

UNICEF-LED WORKING GROUP ON GRAVE VIOLATIONS AGAINST CHILDREN

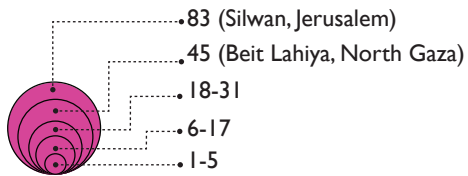


SCHOOLS DAMAGED OR OTHERWISE AFFECTED BY VIOLENCE

including attacks on and restriction of access to schools by Israeli settlers and ISF, and schools threatened with stop-work and demolition orders issued between July 2010 - June 2011.



NUMBER OF CONFLICT-RELATED CHILD CASUALTIES*



CHECKPOINTS/GATES WHERE CHILDREN FACE DELAYS, HARASSMENT, AND/OR ABUSE BY SOLDIERS ON THEIR WAY TO AND FROM SCHOOLS**

NO.	Name	Type
1	Tura	Barrier Checkpoint
2	Reikhan Barta'a	Barrier Checkpoint
3	Nazlat 'Isa South	Barrier Checkpoint
4	Tayasir	Checkpoint
5	Jubara	Barrier Checkpoint
6	Hamra	Checkpoint
7	Zufin	Barrier Checkpoint
8	Jaljouliya	Barrier Checkpoint
9	Habla	Barrier Gate
10	'Izbat Salman North	Barrier Gate
11	An Nabi Salih partial checkpoint	Partial Checkpoint
12	Beit 'Ur al Fauqa	Checkpoint
13	Qalandiya	Barrier Checkpoint
14	Al Jib	Barrier Checkpoint
15	Beit Iksa	Barrier Checkpoint
16	Hizma	Barrier Checkpoint
17	Zaytoun	Barrier Checkpoint
18	An Nu'man	Barrier Checkpoint
19	Al-Shuhada St. (CP 56)	Checkpoint
20	Close to the entrance of Tel Rumeida settlement CP (55)	Checkpoint
21	Beit Yatir	Barrier Checkpoint

WEST BANK

□ Governorate Capital

--- Green Line

BARRIER

— Constructed / Under Construction

--- Planned

■ Israeli Closed Military Area

■ Israeli settlement outer limit, municipal boundary, outposts and land cultivated by settlers

OSLO AGREEMENT

■ Area A

■ Area B

■ Area C

GAZA STRIP

■ 500 Meter No-Go Zone

■ High Risk Zone

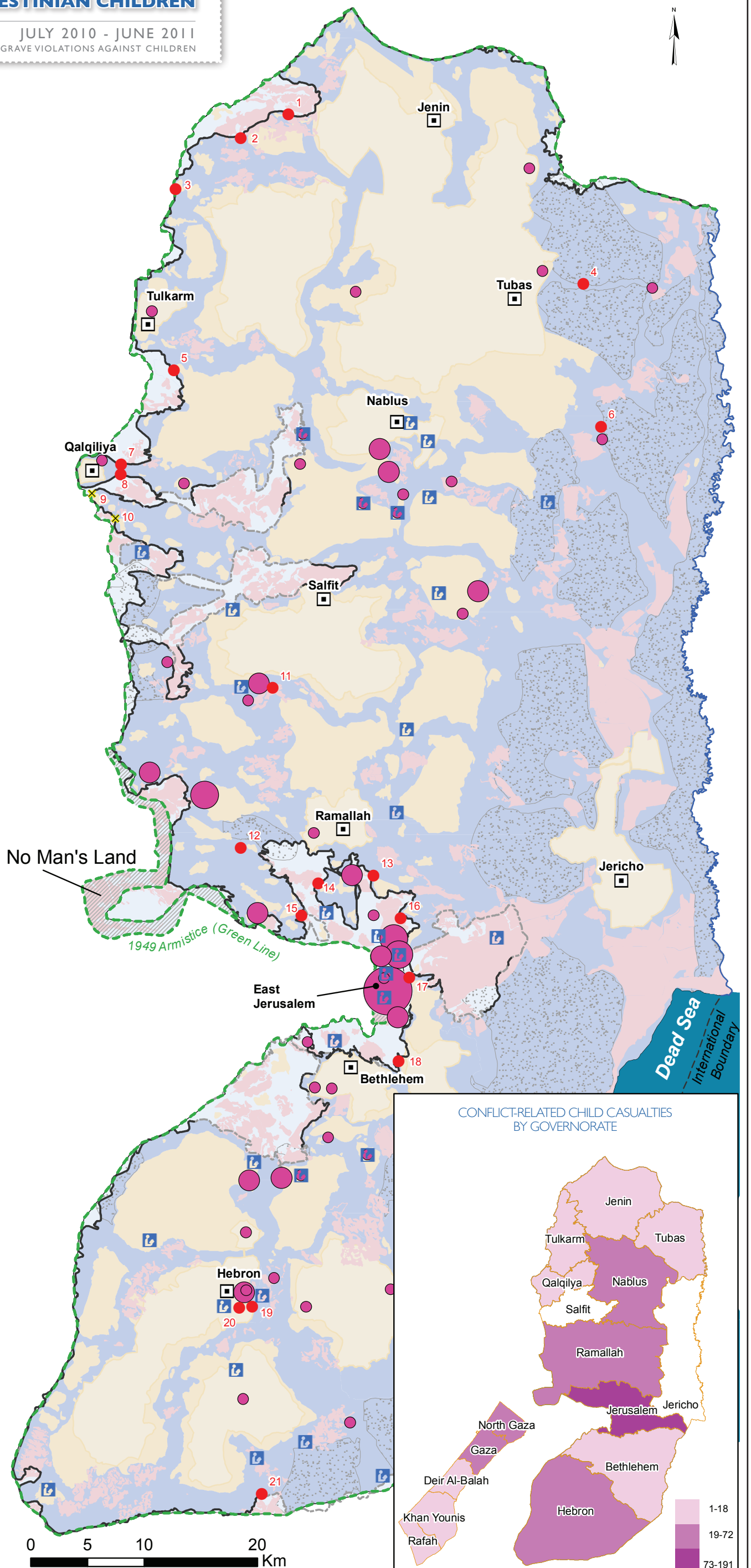
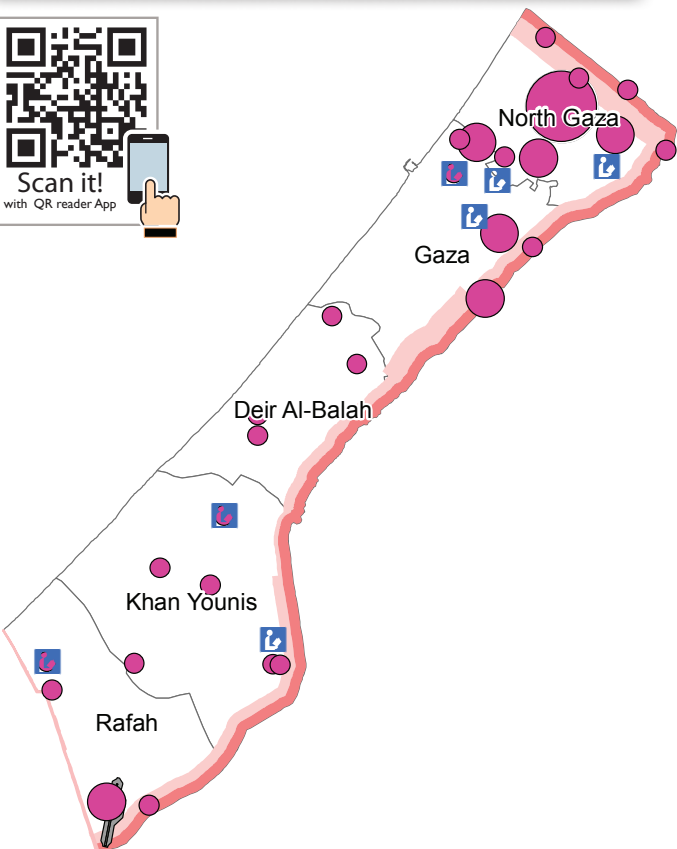
*Children affected by violence, July 2010-June 2011, Source: OCHA PoC database, UNICEF-led Working Group on Grave Violations against Children.

** Information obtained from the Child Protection Working Group, and the Education Cluster

➔ For more information, please refer to index on page 32.



Scan it!
with QR reader App



CONFLICT-RELATED CHILD CASUALTIES BY GOVERNORATE

