



United Nations Office for the Coordination of Humanitarian Affairs

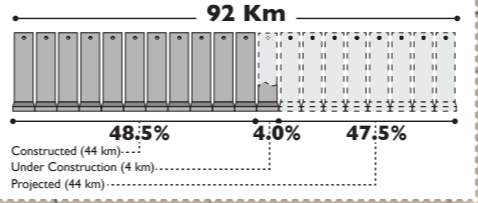
WEST BANK ACCESS RESTRICTIONS - QALQILIYA

DECEMBER 2011

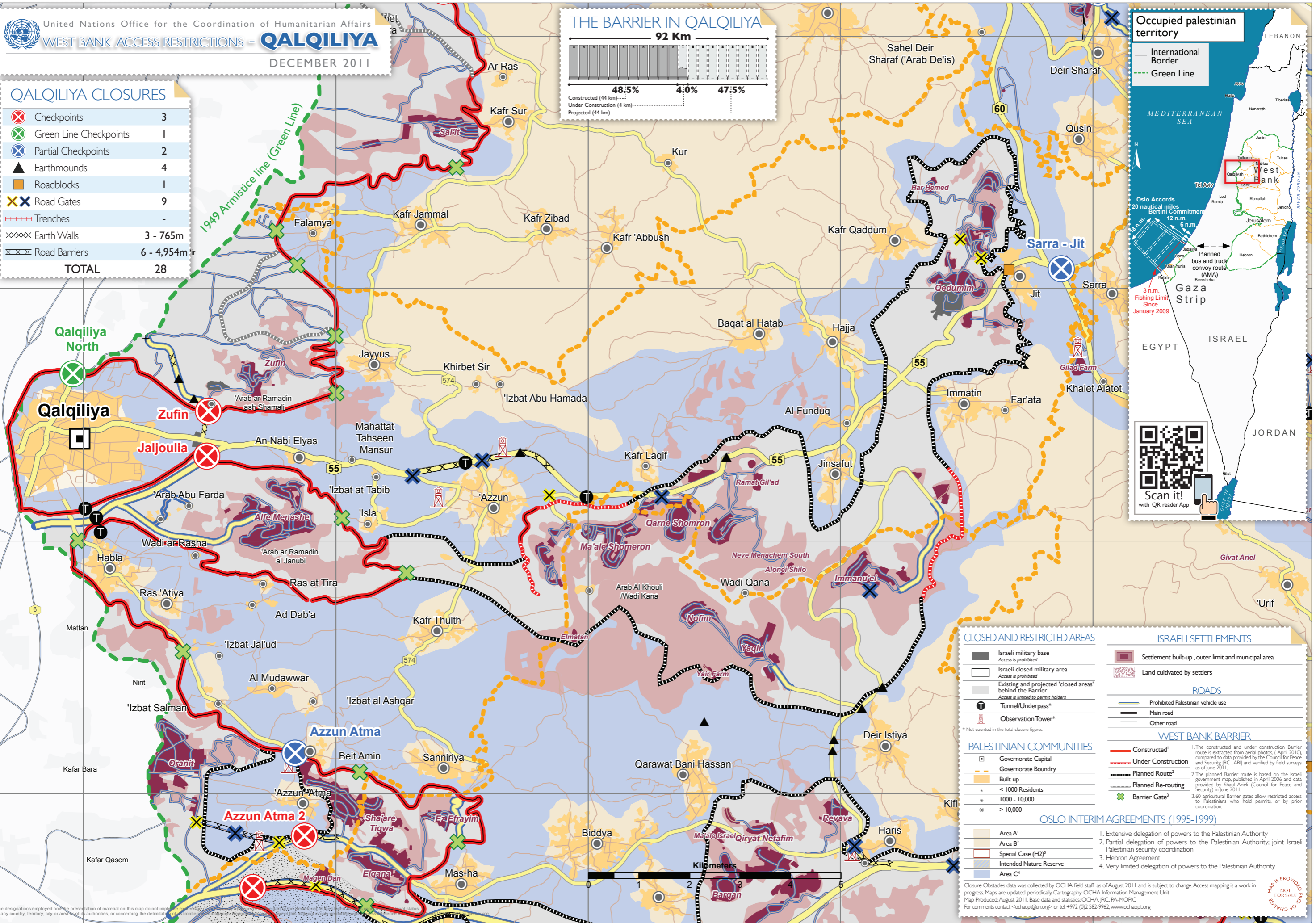
QALQILIYA CLOSURES

⊗	Checkpoints	3
⊗	Green Line Checkpoints	1
⊗	Partial Checkpoints	2
▲	Earthmounds	4
■	Roadblocks	1
⊗	Road Gates	9
---	Trenches	-
⊗	Earth Walls	3 - 765m
⊗	Road Barriers	6 - 4,954m
TOTAL		28

THE BARRIER IN QALQILIYA



Occupied Palestinian territory



CLOSED AND RESTRICTED AREAS

- Israeli military base
Access is prohibited
- Israeli closed military area
Access is prohibited
- Existing and projected 'closed areas' behind the Barrier
Access is limited to permit holders
- Tunnel/Underpass*
- Observation Tower*

PALESTINIAN COMMUNITIES

- Governorate Capital
- Governorate Boundary
- Built-up
- < 1000 Residents
- 1000 - 10,000
- > 10,000

OSLO INTERIM AGREEMENTS (1995-1999)

- Extensive delegation of powers to the Palestinian Authority
- Partial delegation of powers to the Palestinian Authority; joint Israeli-Palestinian security coordination
- Hebron Agreement
- Very limited delegation of powers to the Palestinian Authority

ISRAELI SETTLEMENTS

- Settlement built-up, outer limit and municipal area
- Land cultivated by settlers

ROADS

- Prohibited Palestinian vehicle use
- Main road
- Other road

WEST BANK BARRIER

- Constructed¹
- Under Construction
- Planned Route²
- Planned Re-routing
- Barrier Gate³

Closure Obstacles data was collected by OCHA field staff as of August 2011 and is subject to change. Access mapping is a work in progress. Maps are updated periodically. Cartography: OCHA Information Management Unit
Map Produced: August 2011. Base data and statistics: OCHA, IRC, PA-MOPIC
For comments contact <ochaopt@un.org> or tel. +972 (0)2 582-9962. www.ochaopt.org

8

9

10

11

7