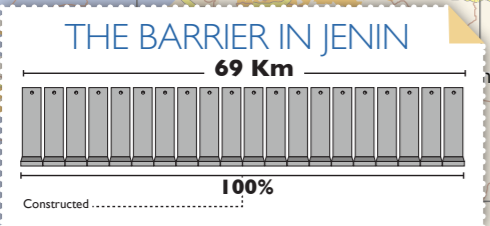
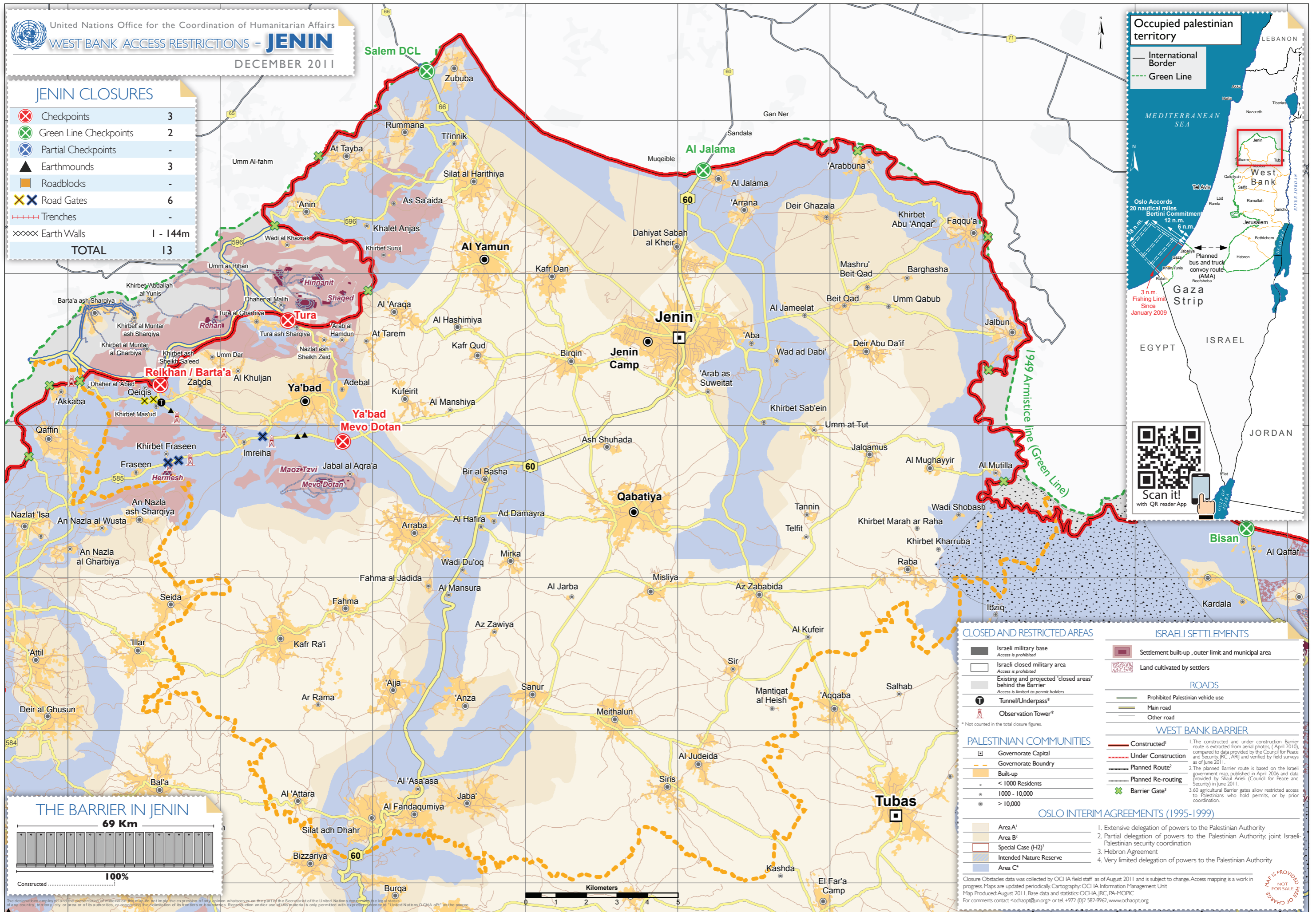


JENIN CLOSURES

⊗	Checkpoints	3
⊗	Green Line Checkpoints	2
⊗	Partial Checkpoints	-
▲	Earthmounds	3
■	Roadblocks	-
⊗	Road Gates	6
---	Trenches	-
⊗	Earth Walls	1 - 144m
TOTAL		13



CLOSED AND RESTRICTED AREAS

- Israeli military base (Access is prohibited)
- Israeli closed military area (Access is prohibited)
- Existing and projected 'closed areas' behind the Barrier (Access is limited to permit holders)
- Tunnel/Underpass*
- Observation Tower*

ISRAELI SETTLEMENTS

- Settlement built-up, outer limit and municipal area
- Land cultivated by settlers

ROADS

- Prohibited Palestinian vehicle use
- Main road
- Other road

WEST BANK BARRIER

- Constructed¹
- Under Construction
- Planned Route²
- Planned Re-routing
- Barrier Gate³

PALESTINIAN COMMUNITIES

- Governorate Capital
- Governorate Boundary
- Built-up
 - < 1000 Residents
 - 1000 - 10,000
 - > 10,000

OSLO INTERIM AGREEMENTS (1995-1999)

- Extensive delegation of powers to the Palestinian Authority
- Partial delegation of powers to the Palestinian Authority; joint Israeli-Palestinian security coordination
- Hebron Agreement
- Very limited delegation of powers to the Palestinian Authority

*Not counted in the total closure figures.

Closure Obstacles data was collected by OCHA field staff as of August 2011 and is subject to change. Access mapping is a work in progress. Maps are updated periodically. Cartography: OCHA Information Management Unit. Map Produced: August 2011. Base data and statistics: OCHA, JRC, PA-MOPIC. For comments contact ochaapt@un.org or tel. +972 (0)2 582-9962, www.ochaopt.org