



- 1-3
- 4-10
- > 11

 Governorate Capital

— Constructed / Under Construction

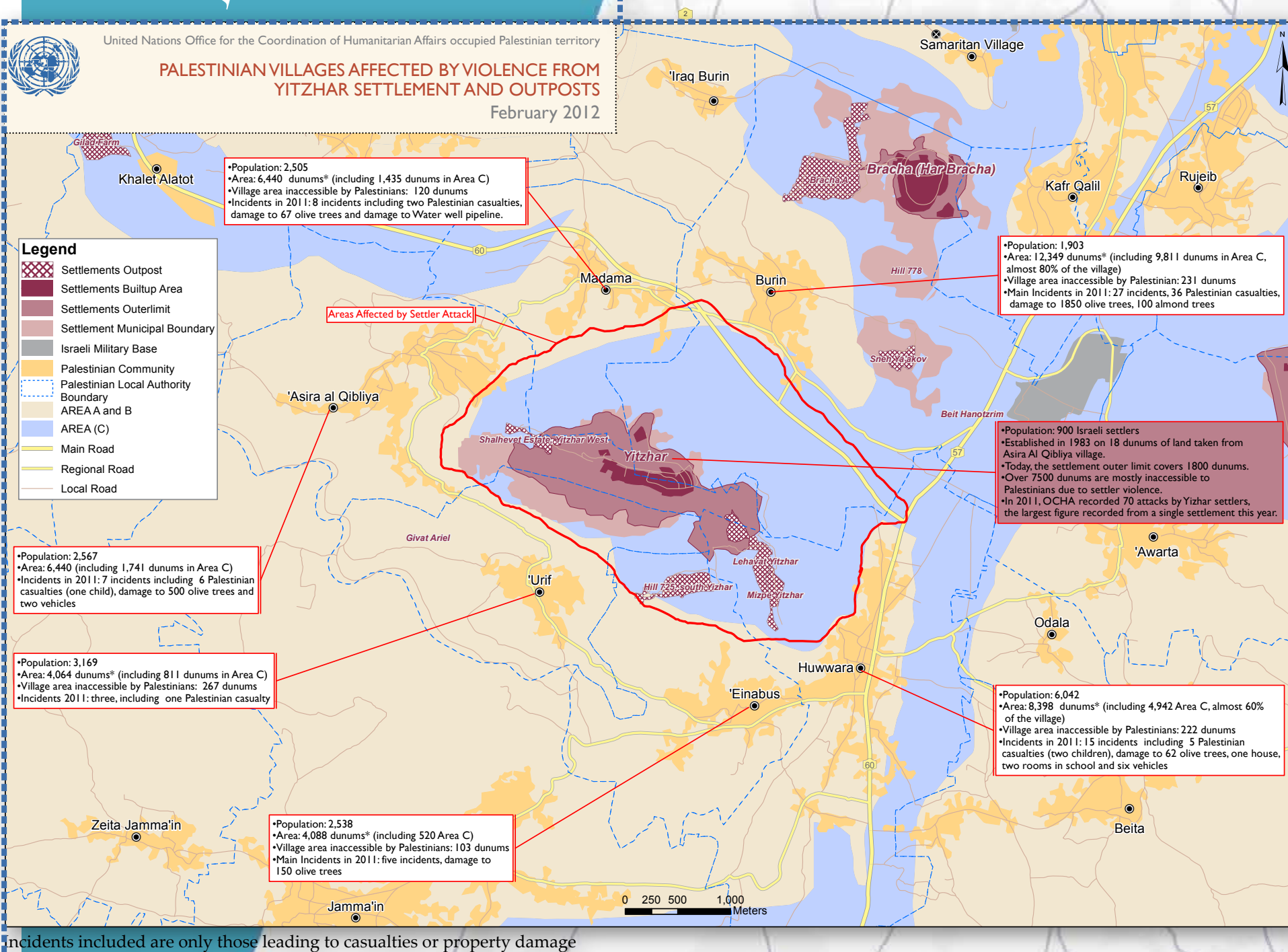
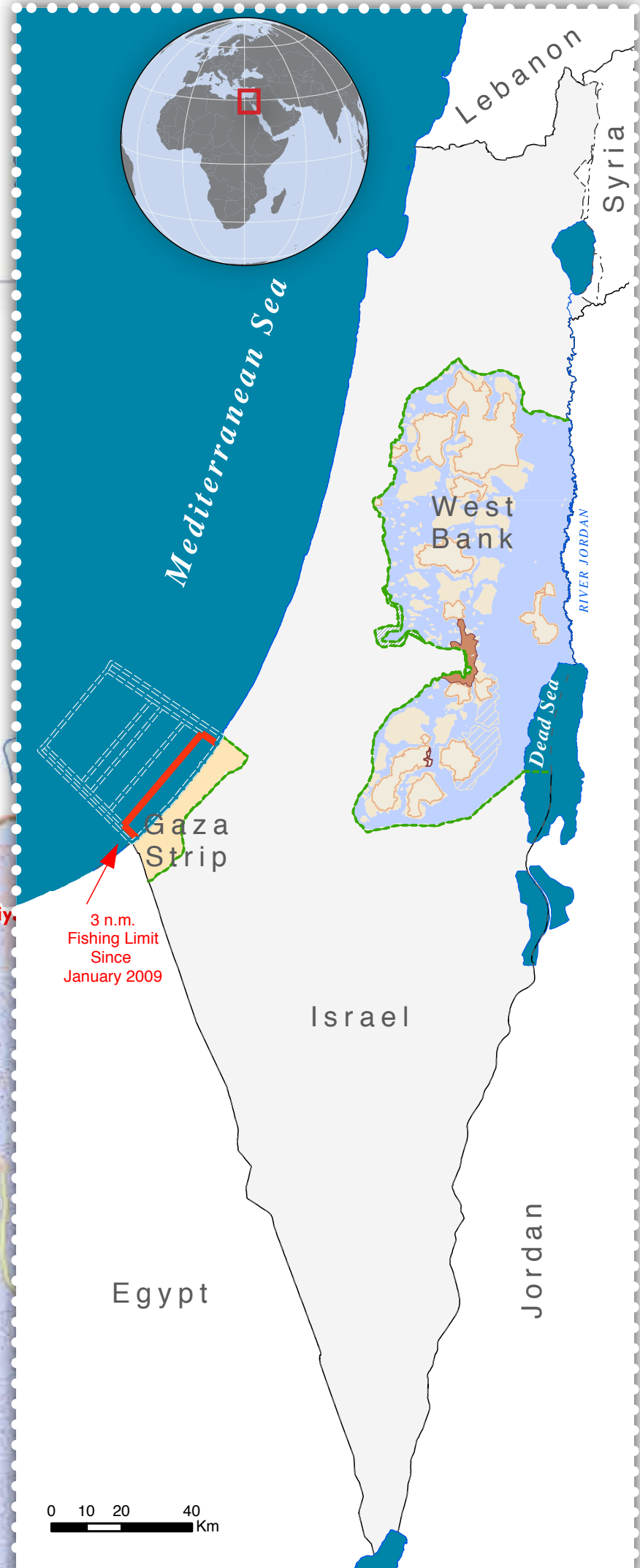
Planned
Israeli settlement regional council
Israeli settlement outer limit, municipal boundary, outposts and land cultivated by settlers

SLO AGREEMENT

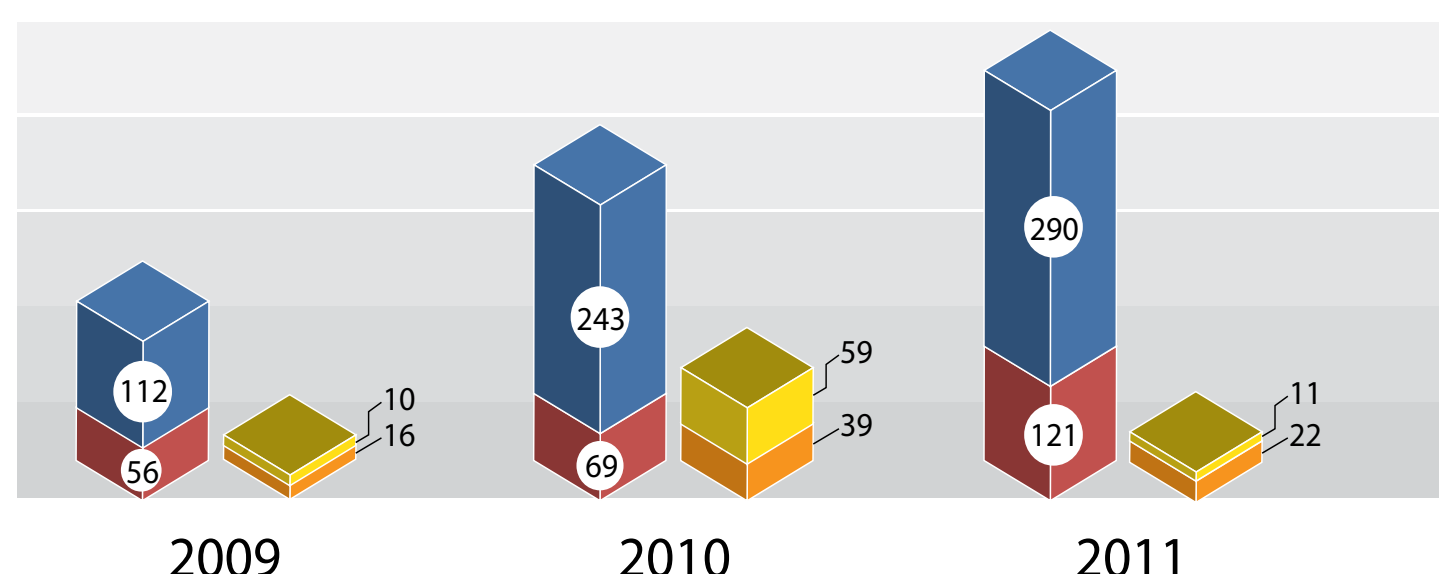
Area A

 Area B

*Includes incidents that occurred in 2011 and resulted in Palestinian casualties or property damages



SETTLER-RELATED INCIDENTS RESULTING IN CASUALTIES OR PROPERTY DAMAGE

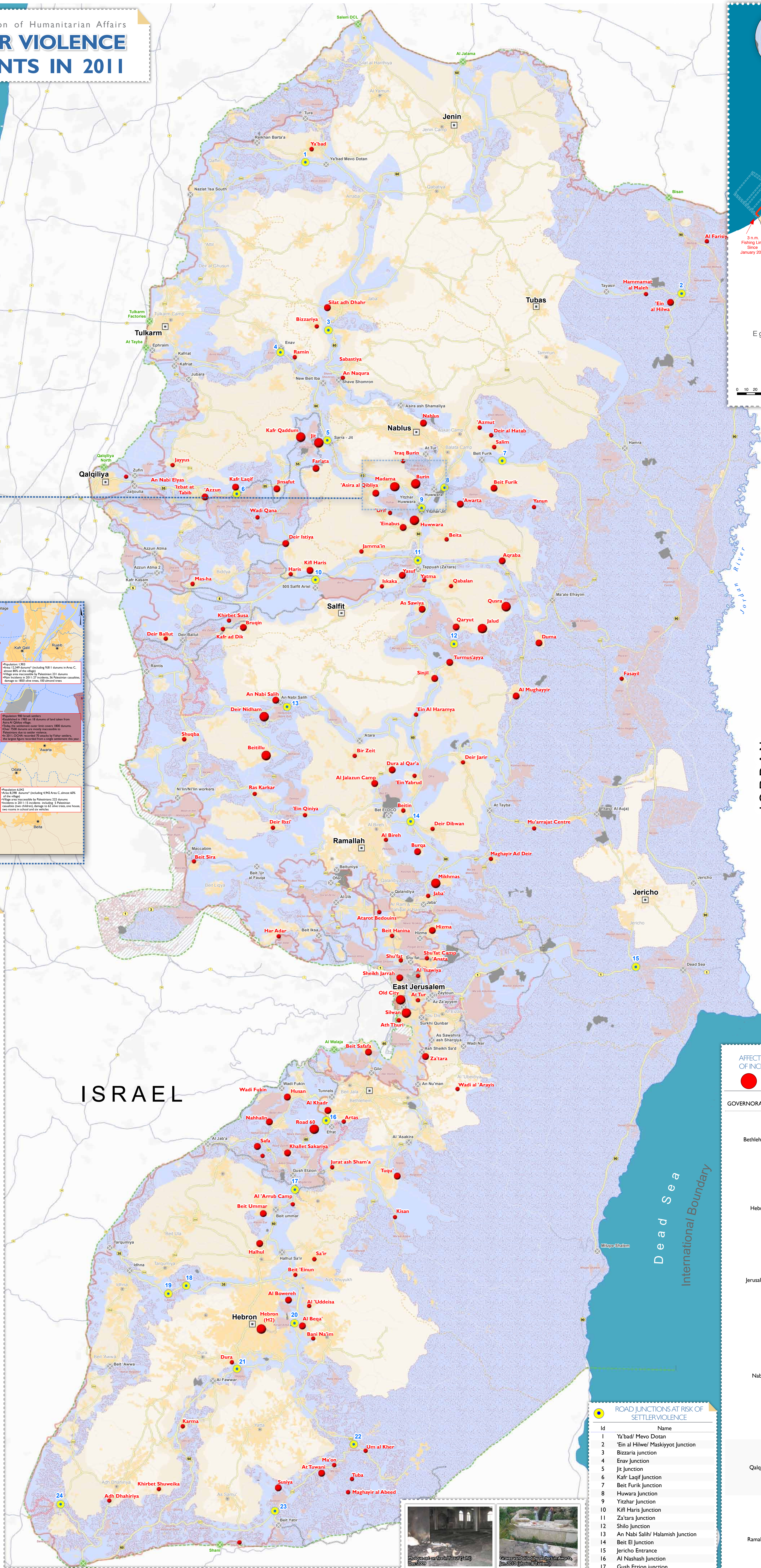


Incidents affecting Palestinians

Incidents affecting Settlers

KEY FACTS

- The weekly average of settler attacks resulting in Palestinian casualties and property damage increased by 32% in 2011 compared to 2010, and by over 14% compared to 2009.
- In 2011, three Palestinians were killed and 183 injured by Israeli settlers. In addition, one Palestinian was killed, and 125 others injured, by Israeli soldiers during clashes between Israeli settlers and Palestinians.
- In 2011, eight Israeli settlers were killed and another 37 were injured by Palestinians
- In 2011, about 10,000 Palestinian-owned trees, primarily olive trees, were damaged or destroyed by Israeli settlers, significantly undermining the livelihoods of hundreds of families.
- In 2011, 139 Palestinians were displaced due to settler attacks, with some affected families moving to Areas A and B.
- Over 90% of monitored complaints regarding settler violence filed by Palestinians with the Israeli police in recent years have been closed without indictment. (Yesh Din)
- OCHA has identified over 80 communities with a combined population of nearly 250,000 Palestinians vulnerable to settler violence, including 76,000 who are at high-risk.



ISRAEL

ROAD JUNCTIONS AT RISK OF SETTLER VIOLENCE

Id	Name
1	Ya'sad/ Mevo Doan
2	'Einar al Hilwe/ Maskisyoot Junction
3	Bizzia Junction
4	Enay Junction
5	Jit Junction
6	Kafir Laqif Junction
7	Beit Furk Junction
8	Hawara Junction
9	Yitzhar Junction
10	Kifri Haris Junction
11	Za'tara Junction
12	Shilo Junction
13	An Nabl Salini/ Halamish Junction
14	Beit Elur Junction
15	Jericho Entrance
16	Al Nashash Junction
17	Gush Etzion Junction
18	Teleim Entrance
19	Adora Entrance
20	Kiryat arba Entrance
21	Jericho Junction
22	Karmel Junction
23	Susyia Entrance
24	Eshkolot Junction

AFFECTED PALESTINIAN LOCALITIES BY NUMBER OF INCIDENTS (2011), RESULTING IN CASUALTIES OR PROPERTY DAMAGE

GOVERNORATE	Locality	Year	2011
Bethlehem	Road 60	12	<div></div>
	Tuqu'	4	<div></div>
	Safa	4	<div></div>
	Husan	3	<div></div>
	Al Khadr	5	<div></div>
	Khallet Sakariya	7	<div></div>
	Nahhalin	5	<div></div>
Hebron	Hebron (H2)	16	<div></div>
	Beit Ummar	7	<div></div>
	Al Bega'	6	<div></div>
	Al 'Arrub Camp	1	<div></div>
	Al Bowereh	4	<div></div>
	Hallul	4	<div></div>
	Ac Tuwani	3	<div></div>
Jerusalem	Susya	4	<div></div>
	Sa'ir	1	<div></div>
	Sheikh Jarrah	6	<div></div>
	Silvan	8	<div></div>
	Old City	18	<div></div>
	Mishmas	14	<div></div>
	Za'tara	6	<div></div>
Nablus	Hizma	3	<div></div>
	Beit Safafa	3	<div></div>
	Jaba'	2	<div></div>
	Burin	21	<div></div>
	Huwwara	19	<div></div>
	Qusra	18	<div></div>
	Qaryut	7	<div></div>
Qalqilya	Madama	11	<div></div>
	'Iraq Burin	2	<div></div>
	Nablus	3	<div></div>
	Jalud	8	<div></div>
	'Asira al Qibliya	5	<div></div>
	'Awarta	9	<div></div>
	'Unf	2	<div></div>
Ramallah	Yanun	2	<div></div>
	Duma	3	<div></div>
	As Sawiya	3	<div></div>
	'Einabus	3	<div></div>
	Kafr Qaddum	11	<div></div>
	Jit	12	<div></div>
	Kafr Laqif	7	<div></div>
Salfit	'Azzun	5	<div></div>
	Far'ata	3	<div></div>
	Jinsafut	3	<div></div>
	Wadi Qana	2	<div></div>
	Sinjil	5	<div></div>
	Beitellu	8	<div></div>
	Deir Nidham	8	<div></div>
Tulkarm	Turnus'ayya	6	<div></div>
	Al Mughayyir	5	<div></div>
	Burqa	5	<div></div>
	Ras Karkar	2	<div></div>
	'Ein Yabrud	2	<div></div>
	An Nabl Salih	3	<div></div>
	Dura al Qarna	3	<div></div>
Zakariya	Kift Haris	4	<div></div>
	Yasuf	5	<div></div>
	Deir Istiya	6	<div></div>
	Other localities	50	<div></div>
Total		411	

Data applicable until December 2011. Settler violence data is collected by OCHA field staff and is subject to change. Settler violence mapping is a work in progress. Maps are updated periodically.
Cartography: OCHA Information Management Unit
Map Produced March 2010
Base data and statistics: OCHA
For comments contact <ochaopt@un.org> or tel. +972 (0)2 582-9962 - www.ochaopt.org