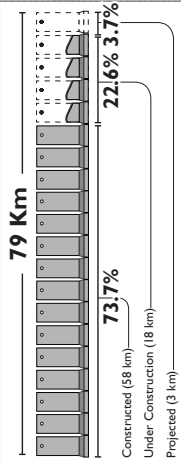


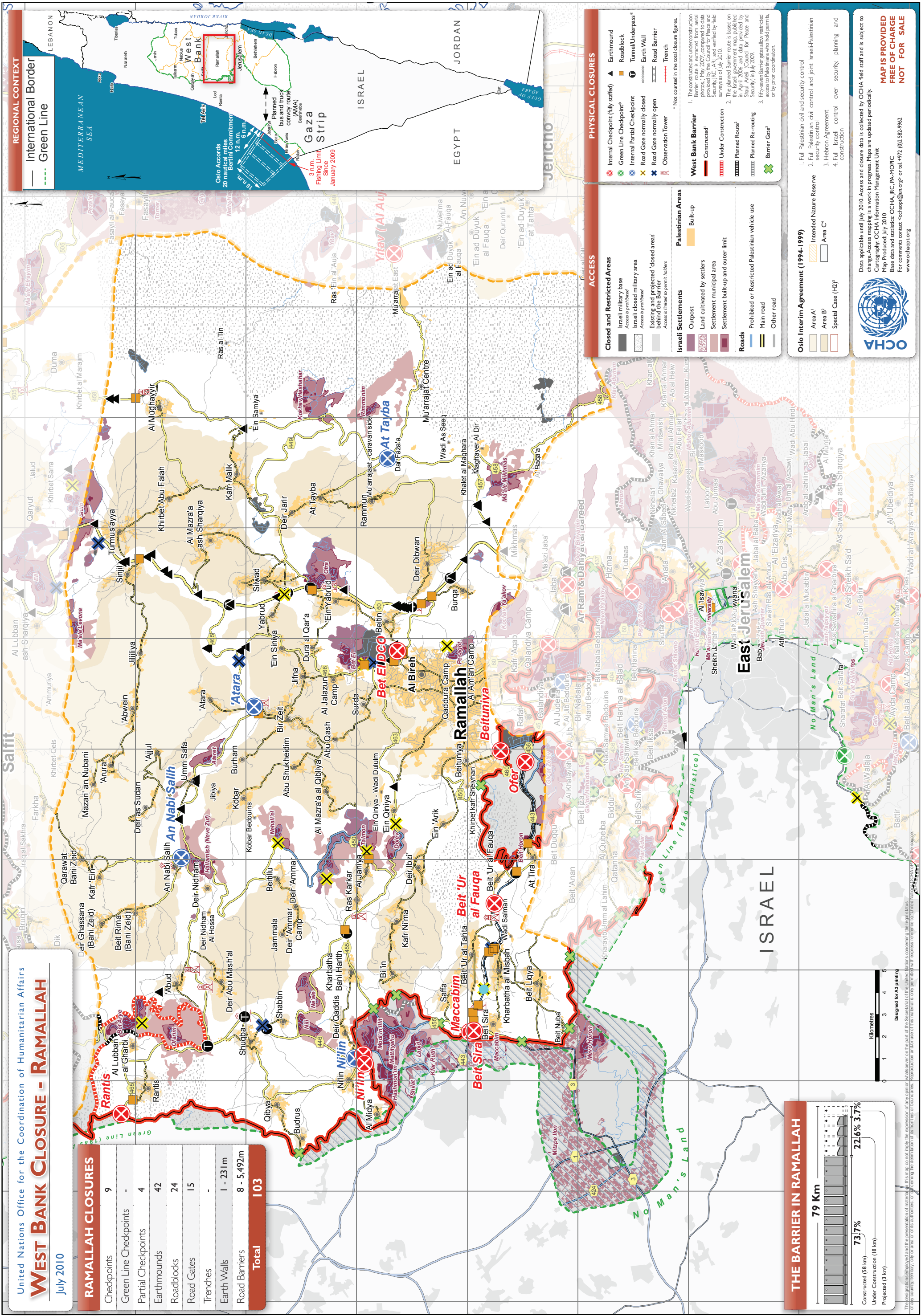
RAMALLAH CLOSURES

Checkpoints	9
Green Line Checkpoints	-
Partial Checkpoints	4
Earthmounds	42
Roadblocks	24
Road Gates	15
Trenches	-
Earth Walls	1 - 23 1m
Road Barriers	8 - 5,492m
Total	103

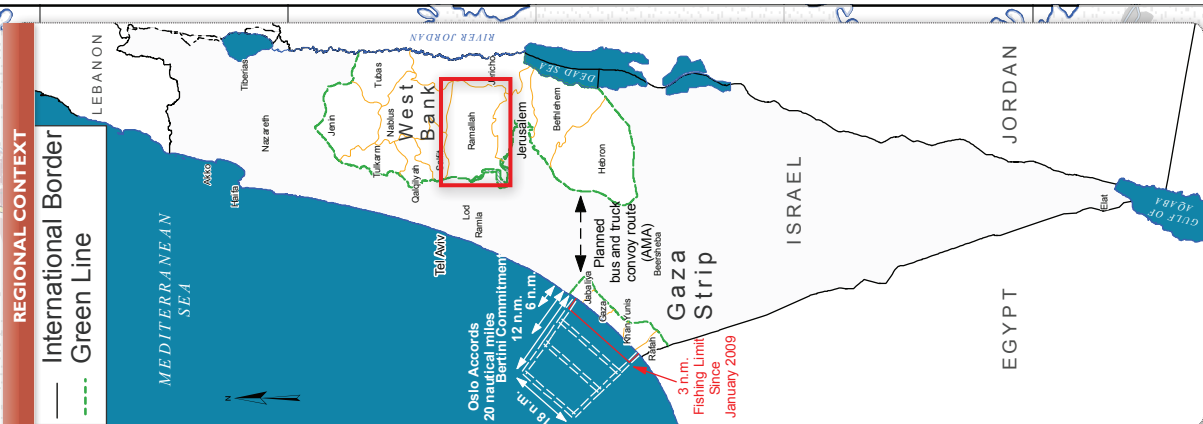
THE BARRIER IN RAMALLAH



The designations employed and the presentation of material in this map do not imply the expression of any opinion whatsoever on the part of the Secretariat of the United Nations concerning the legal status of any country, territory, city or area or its authorities, or concerning the delimitation of its frontiers or boundaries. Reproduction and/or use of the material is very permitted with express reference to 'UNITED NATIONS OFFICE FOR THE COORDINATION OF HUMANITARIAN AFFAIRS'.



REGIONAL CONTEXT
International Border
Green Line



Closed and Restricted Areas

- Israeli military base
- Access is prohibited
- Israeli closed military area
- Access is prohibited
- Existing and projected 'closed areas'
- Access is limited to permit holders

ACCESS

- Internal Checkpoint (fully staffed)
- Green Line Checkpoint*
- Internal Partial Checkpoint
- Road Gate normally closed
- Road Gate normally open
- Observation Tower

PHYSICAL CLOSURES

- Earthmound
- Roadblock
- Tunnel/Underpass*
- Earth Wall
- Road Barrier
- Trench

* Not counted in the total closure figures.

West Bank Barrier

- Constructed
- Under Construction
- Planned Route
- Planned Re-routing
- Barrier Gate

Israeli Settlements

- Outpost
- Land cultivated by settlers
- Settlement municipal area
- Settlement built-up and outer limit

Roads

- Prohibited or Restricted Palestinian vehicle use
- Main road
- Other road

Oslo Interim Agreement (1994-1999)

- Area A'
- Area B'
- Special Case (H2)
- Intended Nature Reserve
- Area C'

Oslo Accords

- 20 nautical miles
- Bertini Commitment
- 12 n.m.
- 6 n.m.
- 3 n.m.
- Fishing Limit
- Planned bus and truck conveyance route
- Planned bus and truck conveyance route
- Planned bus and truck conveyance route
- Planned bus and truck conveyance route

Map is provided FREE OF CHARGE NOT FOR SALE

Data applicable until July 2010. Access and closure data is collected by OCHA field staff and is subject to change. Access mapping is a work in progress. Maps are updated periodically.

Cartography: OCHA Information Management Unit
Map Produced: July 2010
Base data and statistics: OCHA, JRC, PA-MOPIC
For comments contact: cochopt@un.org or tel. +972 (0) 582-9962
www.cochopt.org