



# United Nations Office for the Coordination of Humanitarian Affairs JORDAN VALLEY: ACCESS AND CLOSURE

November 2010

## PHYSICAL CLOSURES

- Internal Checkpoint (fully staffed) ▲ Earthmound
- Green Line Checkpoint\* Roadblock
- Internal Partial Checkpoint Tunnel/Underpass\*
- Road Gate normally closed
- Road Gate normally open
- Observation Tower

\* Not counted in the total closure figures.

## West Bank Barrier

- Constructed<sup>1</sup>
- Under Construction
- Planned Route<sup>2</sup>
- Planned Re-routing
- Barrier Gate<sup>3</sup>

- The constructed and under construction Barrier route is extracted from aerial photos, (May 2009), compared to data provided by the Council for Peace and Security (JRC, ARJ) and verified by field surveys as of July 2010.
- The planned Barrier route is based on the Israeli government map published in April 2006 and data provided by Shaul Ariei (Council for Peace and Security) in July 2009.
- Fifty-seven Barrier gates allow restricted access to Palestinians who hold permits, or by prior coordination.

## ACCESS

### Closed and Restricted Areas

- Israeli military base  
Access is prohibited
- Israeli closed military area  
Access is prohibited
- Existing and projected 'closed areas' behind the Barrier  
Access is limited to permit holders

### Israeli Settlements

- Outpost
- Land cultivated by settlers
- Settlement municipal area
- Settlement built-up and outer limit

### Palestinian Areas

- Built-up
- < 500 Residents
- 500 - 20,000
- > 20,000
- Governorate Boundary

### Roads

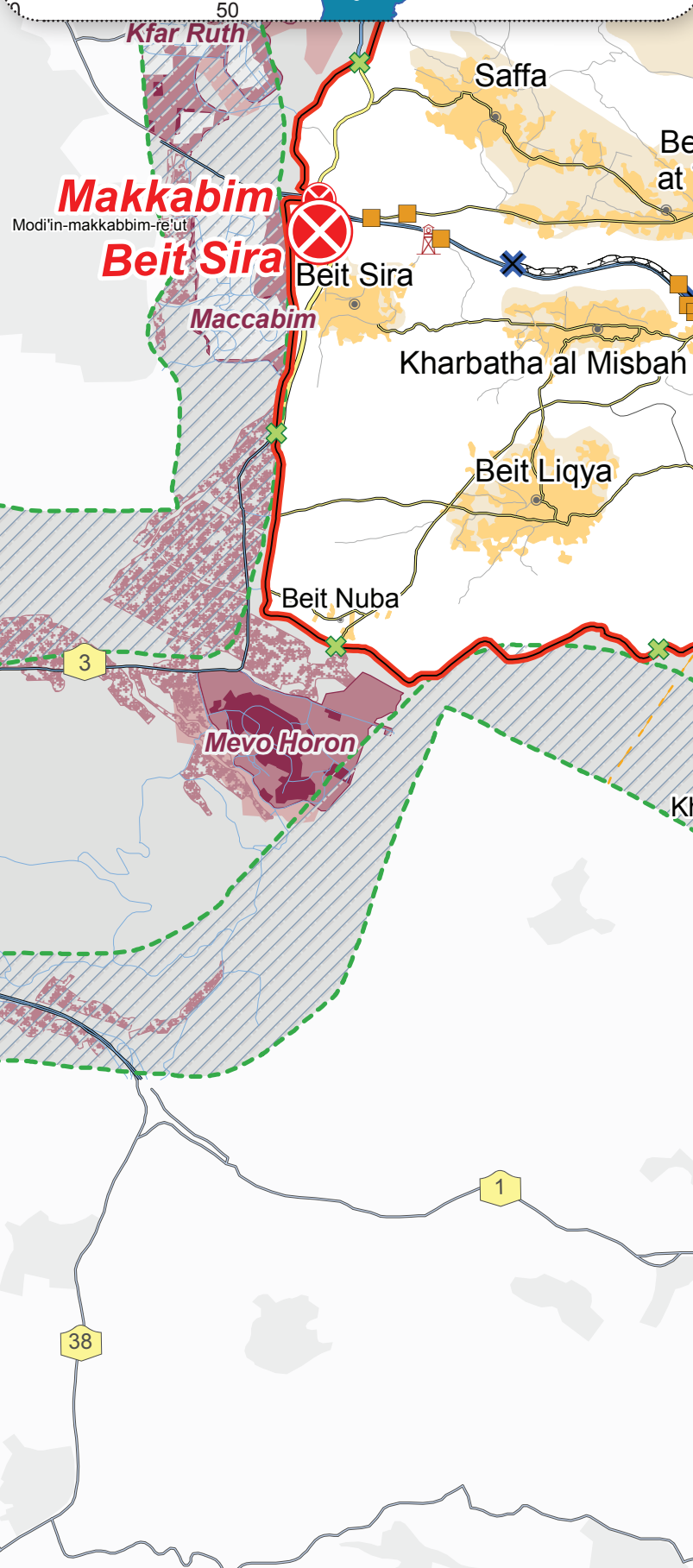
- Prohibited or Restricted Palestinian vehicle use
- Main road
- Other road

### Oslo Interim Agreement (1994-1999)

- Area A<sup>1</sup>
- Area B<sup>2</sup>
- Special Case (H2)<sup>3</sup>
- Intended Nature Reserve
- Area C<sup>4</sup>

- Full Palestinian civil and security control
- Full Palestinian civil control and joint Israeli-Palestinian security control
- Hebron Agreement
- Full Israeli control over security, planning and construction

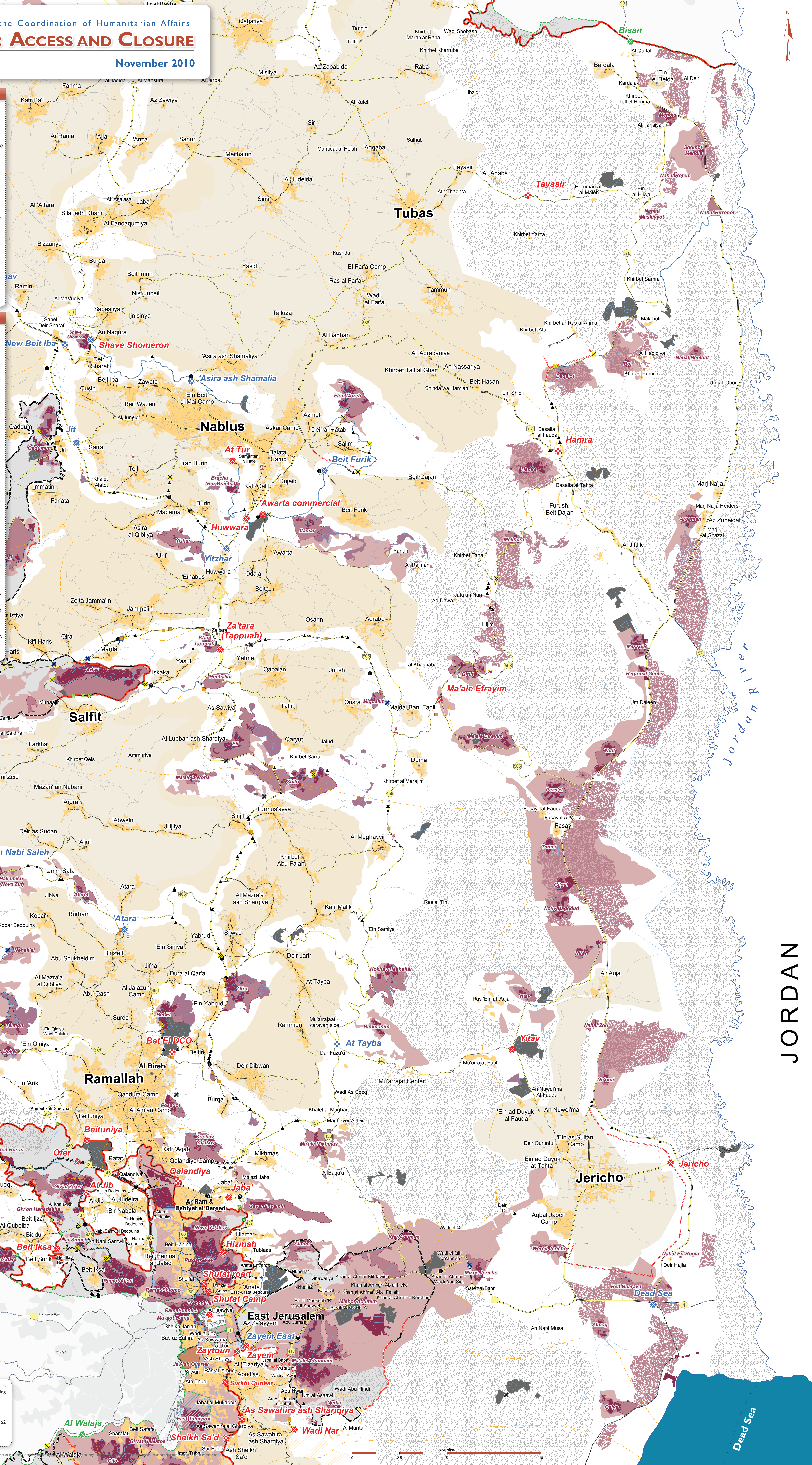
## REGIONAL CONTEXT



Data applicable as of November 2010. Access and closure data is collected by OCHA field staff and is subject to change. Access mapping is a work in progress. Maps are updated periodically.  
Cartography: OCHA Information Management Unit  
Map Produced: November 2010  
Base data and statistics: OCHA, JRC, PA-MOPIC  
For comments contact: ochaap@un.org or tel. +972 (0)2 582-9962  
www.ocha.org

NOT FOR SALE

The designations employed and the presentation of material on this map do not imply the expression of any opinion whatsoever on the part of the Secretariat of the United Nations concerning the legal status of any territory, territory or area, or the status of any city, town, village, or other locality, or the status of any country, territory or area, or the status of any city, town, village, or other locality, or the status of any country, territory or area, or the status of any city, town, village, or other locality.



JORDAN

Dead Sea