



GAZA STRIP

ACCESS AND CLOSURE

DECEMBER 2012



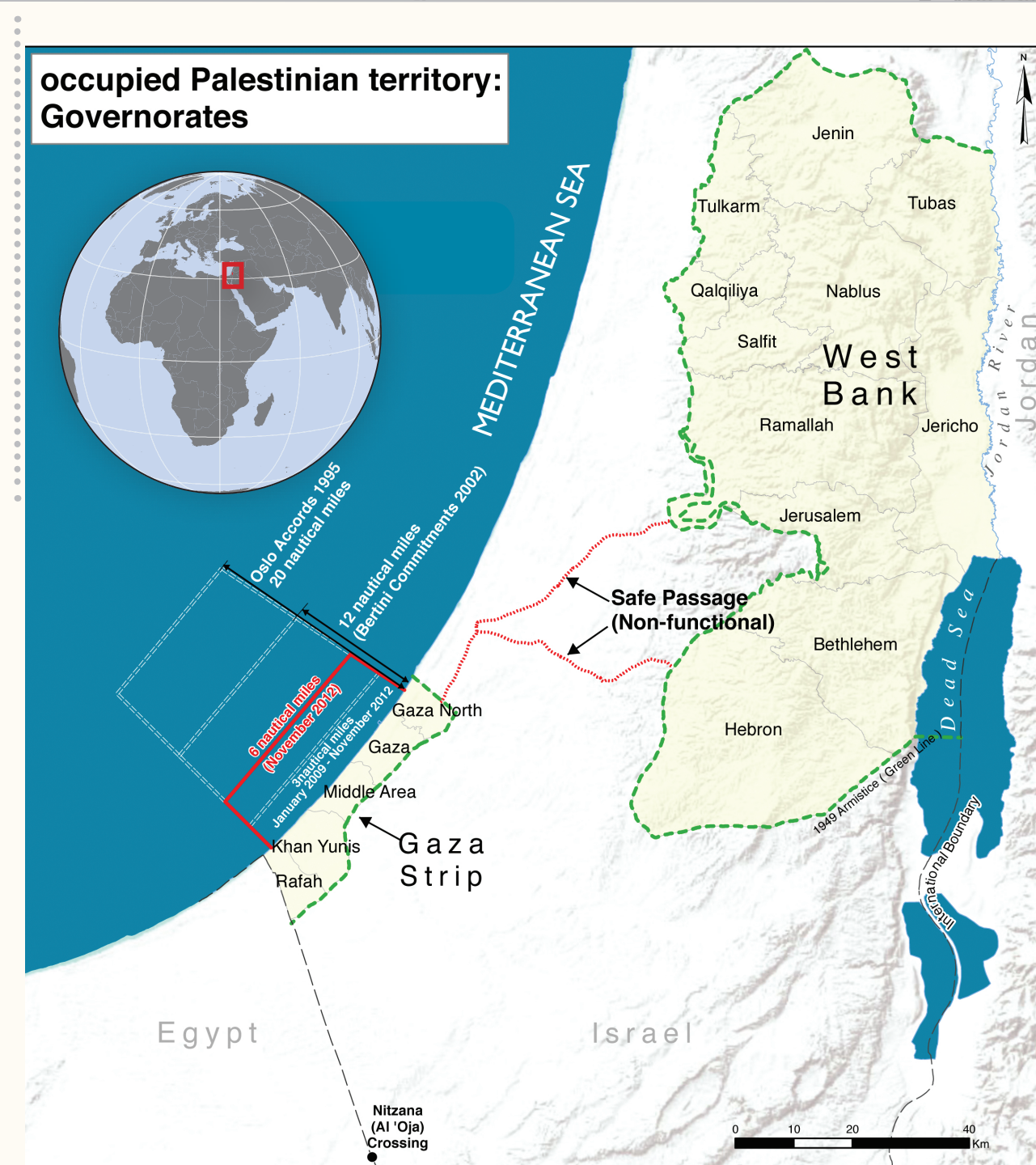
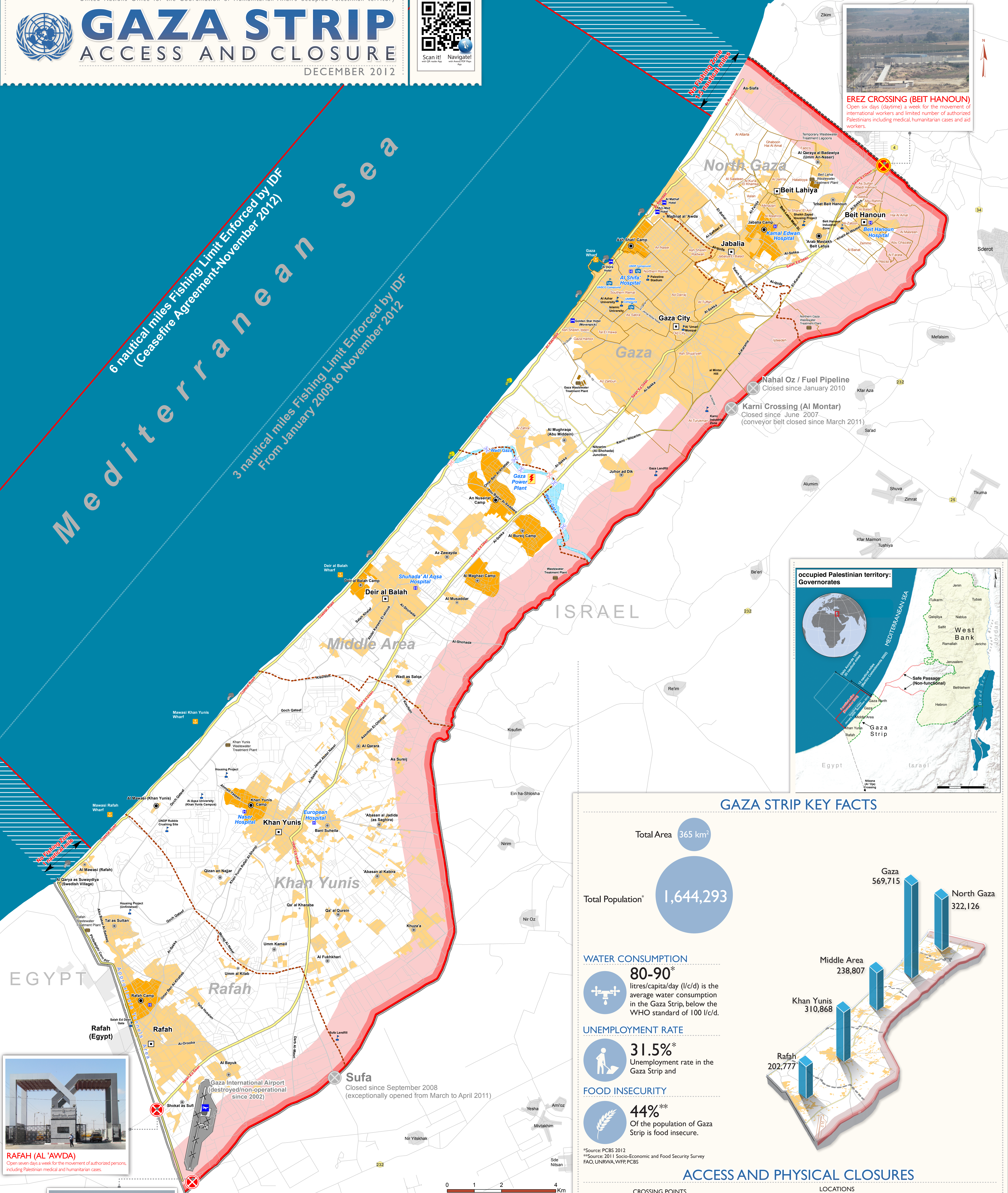
Mediterranean Sea

6 nautical miles Fishing Limit Enforced by IDF
(Ceasefire Agreement-November 2012)

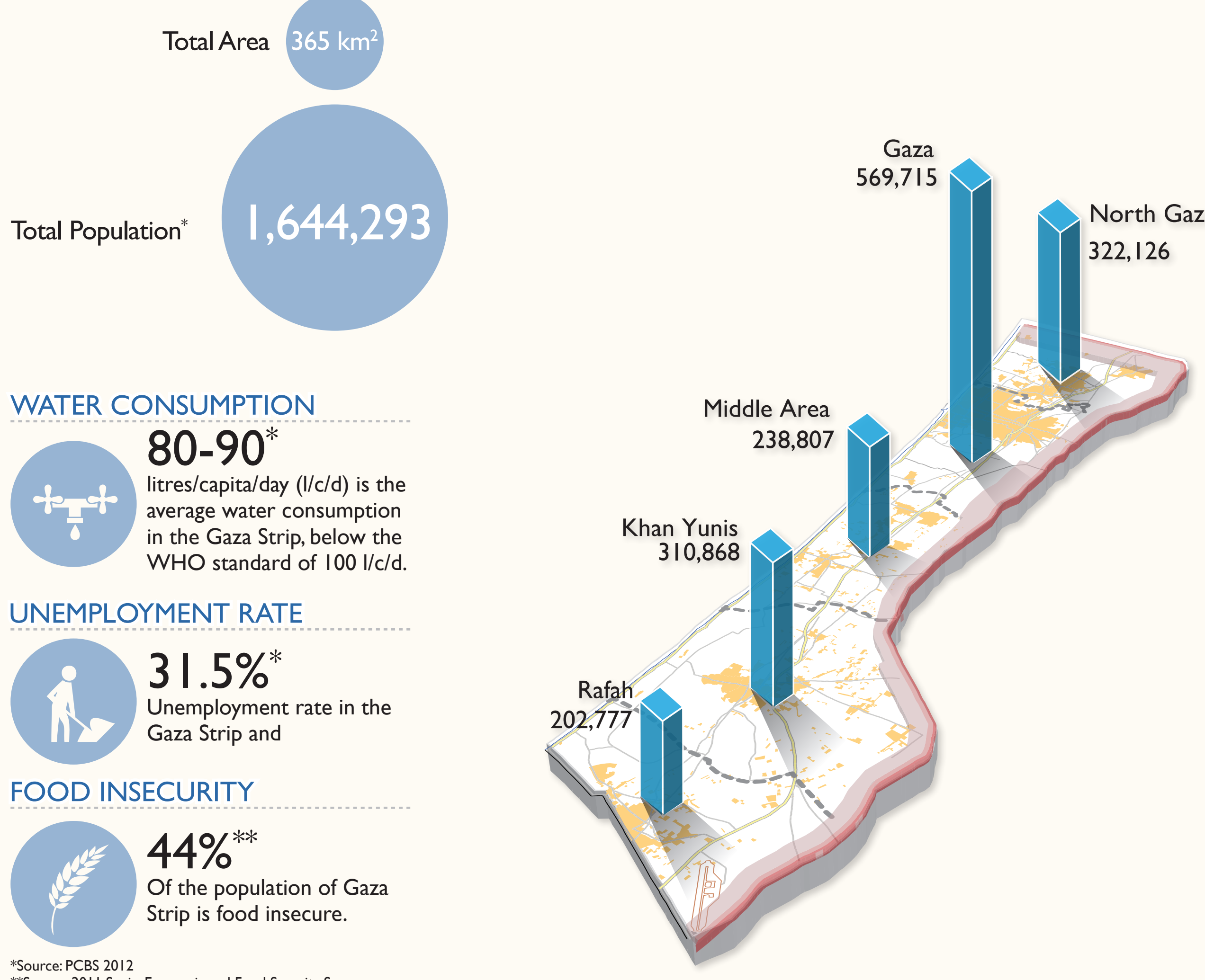
3 nautical miles Fishing Limit Enforced by IDF
From January 2009 to November 2012



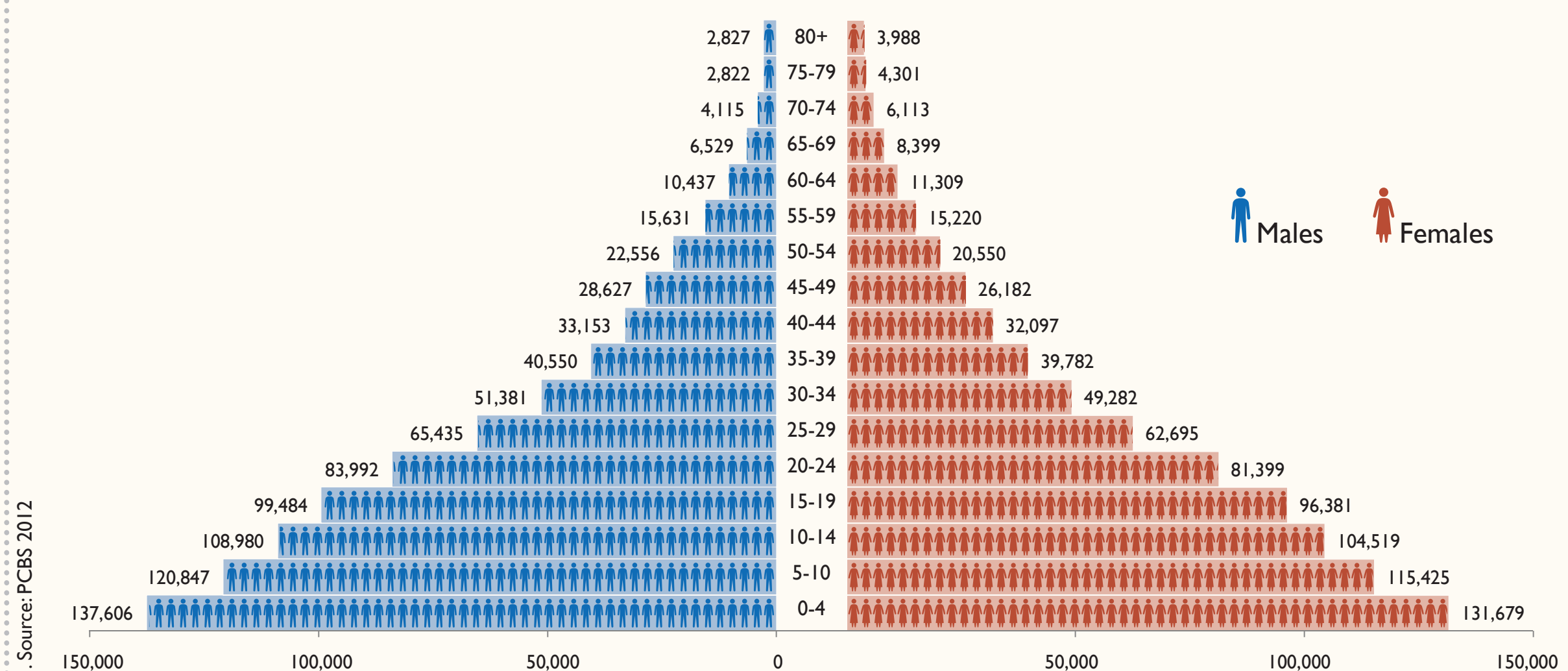
EREZ CROSSING (BEIT HANOUN)
Open six days (daytime) a week for the movement of international workers and limited number of authorized Palestinians including medical, humanitarian cases and aid workers.



GAZA STRIP KEY FACTS



GAZA STRIP GOVERNORATE POPULATION AND AGE DISTRIBUTION¹



RAFAH (AL 'AWDA)
Open seven days a week for the movement of authorized persons, including Palestinian medical and humanitarian cases.



KEREM SHALOM (KARMABU SALEM)
Open five days (day time) a week for movement of authorized goods only.

