

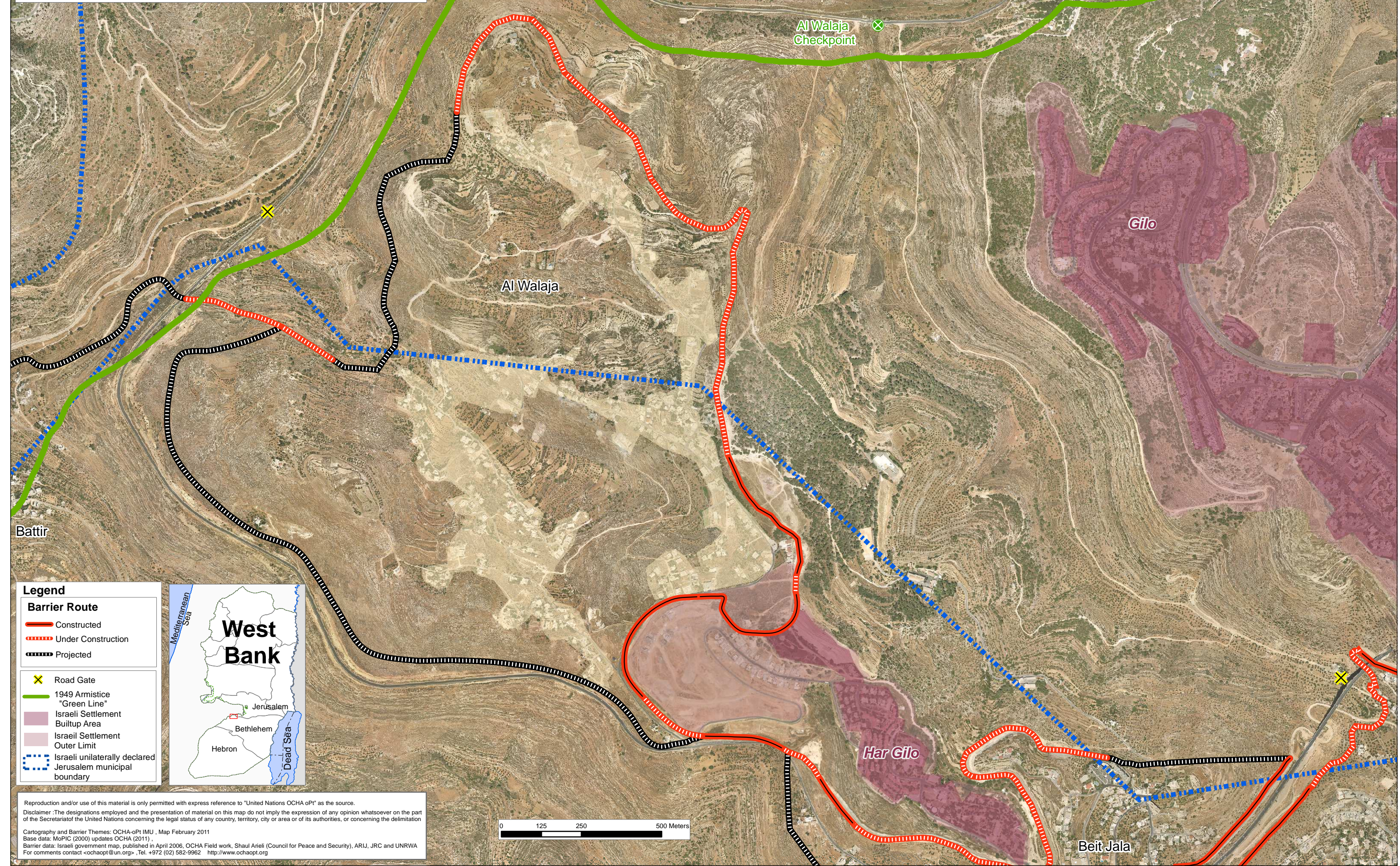


UNITED NATIONS

Office for the Coordination of Humanitarian Affairs
occupied Palestinian territory

The Barrier around Al-Walaja , West Bank

February 2011



Legend

Barrier Route

- Constructed
- Under Construction
- Projected

Other Features

- Road Gate
- 1949 Armistice "Green Line"
- Israeli Settlement Buildup Area
- Israeli Settlement Outer Limit
- Israeli unilaterally declared Jerusalem municipal boundary



Reproduction and/or use of this material is only permitted with express reference to "United Nations OCHA oPt" as the source.

Disclaimer :The designations employed and the presentation of material on this map do not imply the expression of any opinion whatsoever on the part of the Secretariat of the United Nations concerning the legal status of any country, territory, city or area or of its authorities, or concerning the delimitation

Cartography and Barrier Themes: OCHA-oPt IMU , Map February 2011

Base data: MoPIC (2000) updates OCHA (2011)

Barrier data: Israeli government map, published in April 2006, OCHA Field work, Shaul Arieli (Council for Peace and Security), ARIJ, JRC and UNRWA

For comments contact <ochaopt@un.org> , Tel. +972 (02) 582-9962 <http://www.ochaopt.org>

