



## **Additional West Bank Internal Closures**

### **18 October 2005**

#### **Overview**

Following two separate attacks by Palestinian militants that killed three Israeli settlers and wounded six others in the West Bank on Sunday 16 October 2005, the IDF and Border Police tightened internal closures in the West Bank.

By 12:00 hours Tuesday 18 October the status of main internal movement restrictions:

- Palestinian public transport (taxis and buses) were allowed to travel only along **Road No. 60** between **Halhul** (north of Hebron city) to the **Husan-Al Khadr junction** (south of Bethlehem).
- A complete restriction remains in place for all private Palestinians vehicles along the entire length of **Road No. 60** (Bethlehem - Hebron) and **No. 317** (south Hebron).
- A flying checkpoint is operational at **Jaba' (Geva Binyamin) junction** (north of Jerusalem) on **Road No. 60** to prevent Palestinian vehicles traveling along the road.
- A complete restriction for all Palestinian vehicles along **Road No. 465** (north of Ramallah).

The tightened internal closures in the southern West Bank have resulted in three Palestinian areas being isolated:

- Residents of **western Bethlehem villages** including villages of Husan, Battir and Al Walaja (approximately 16,000 Palestinians) can only leave the area on foot.
- All closures around the city of **Hebron** (170,000 Palestinians) for Palestinians have been closed.
- **Yatta** (south Hebron) and its surrounding villages (approximately 70,000 Palestinians) cannot access **Roads No. 60** and **317** linking the town to other areas of the West Bank.

#### **Main closure restrictions (see Map attached)**

- The **Beit Jala DCO checkpoint** in Bethlehem has been closed for all vehicles. It is manned by the IDF and Palestinians are only able to cross the checkpoint on foot. This checkpoint is used by Palestinians as an access point to Jerusalem, for travel between Bethlehem and Hebron and linking a number of Palestinian villages to the west of Bethlehem.
- Both sides of the **Husan-Al Khadr intersection** along **Road No. 60** have been closed off by road blocks (the Al Khader side was previously blocked but this closure has now been reinforced).
- The **Efrat checkpoint** has been re-established by the IDF. The checkpoint restricts access to **Road No. 60** from eastern Bethlehem.

- The **Al Jab'a - Surif junction** across **Road No. 367** has been closed with road blocks.
- The southern access road to **Nahalin** along **Road No. 367** is now monitored (and restricted) by an IDF patrol.
- The **Gush Etzion roadblock** is only monitoring traffic coming from the south along **Road No. 60** and is allowing taxis to pass.
- The **Halhul-Sa'ir junction** across **Road No. 60** (at the entrance to Hebron) has been closed with earth mounds on both sides. Movement is blocked from Palestinian villages onto Road No. 60 in this area.
- All entrances to **Hebron** from **Road No. 35** and **No. 60** have been closed. The **Ras-Al-Joura gate** is currently the only closure open for travel to and from Hebron city and use is limited to the UN, international NGOs and critical service providers (garbage trucks).
- No Palestinian vehicles are allowed to travel south of the **Halhul - Sa'ir junction** on **Road No. 60** as a flying checkpoint erected by the IDF is in place.
- All exits from **Yatta** (southern Hebron) onto **Road No. 317** and **No. 60** are closed. Palestinian Red Crescent Society (PRCS) is getting emergency medical cases out of the area with by a back to back system at the "Zif" gate.
- Closures have been reinforced in the southern Hebron governorate.
- Flying checkpoints are in place at all significant junctions in western Hebron governorate.
- All Palestinian vehicles are not allowed access through **An Nabi Salih gate** partial checkpoint. Palestinians from **Bani Zeid area** will have to travel via 'Ajjul and then to 'Atara bridge partial checkpoint to access Ramallah.

#### **Further Observations**

- The **Container checkpoint** to the West of Jerusalem is working as usual with no additional restrictions.
- Palestinian movement is unhindered on the eastern side of the Bethlehem governorate (along **Road No. 356** and **Za'atara bypass road**) with no flying checkpoints or IDF presence observed.
- Access to **Beit Ummar** and **Al Arrub camp** (south of Gush Etzion settlement bloc) from Road. No. 60 have not been closed.
- No new closures were established in the H2 area of Hebron city.
- There are no additional restrictions on access for the UN and international NGOs to the southern West Bank (DCL offices are facilitating movement).

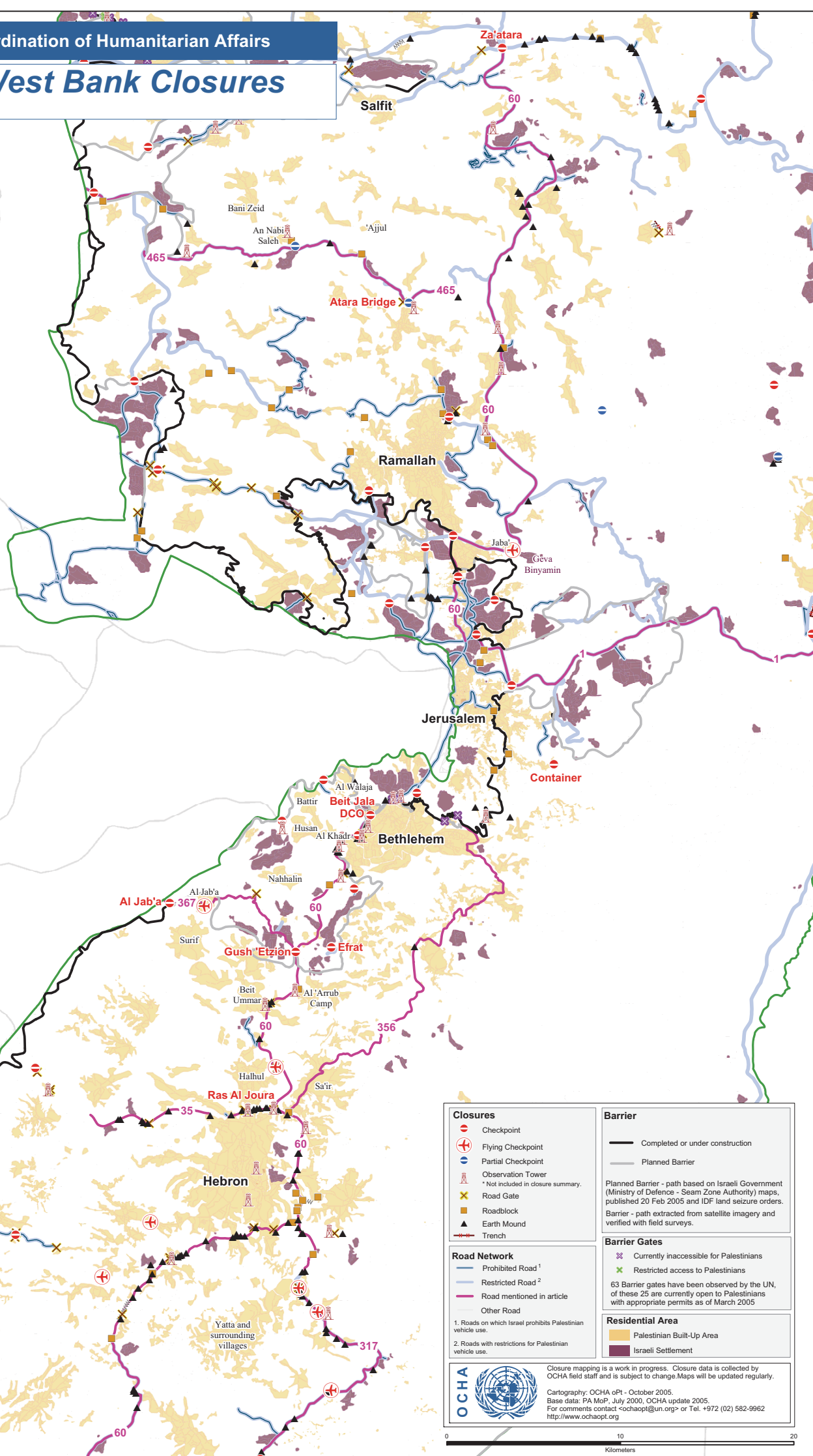
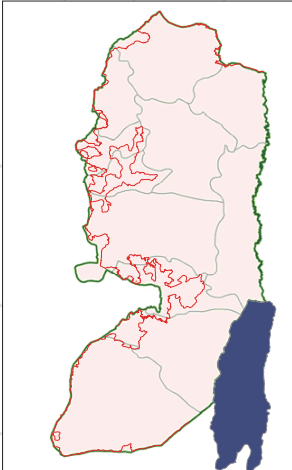
# Additional West Bank Closures

18 October 2005

WEST BANK

Gaza  
ISRAEL  
EGYPT JORDAN

WEST BANK BARRIER



**Closures**

- Checkpoint
- Flying Checkpoint
- Partial Checkpoint
- Observation Tower
- Road Gate
- Roadblock
- Earth Mound
- Trench

**Road Network**

- Prohibited Road<sup>1</sup>
- Restricted Road<sup>2</sup>
- Road mentioned in article
- Other Road

1. Roads on which Israel prohibits Palestinian vehicle use.  
2. Roads with restrictions for Palestinian vehicle use.

**Barrier**

- Completed or under construction
- Planned Barrier

Planned Barrier - path based on Israeli Government (Ministry of Defence - Seam Zone Authority) maps, published 20 Feb 2005 and IDF land seizure orders.  
Barrier - path extracted from satellite imagery and verified with field surveys.

**Barrier Gates**

- Currently inaccessible for Palestinians
- Restricted access to Palestinians

63 Barrier gates have been observed by the UN, of these 25 are currently open to Palestinians with appropriate permits as of March 2005

**Residential Area**

- Palestinian Built-Up Area
- Israeli Settlement