



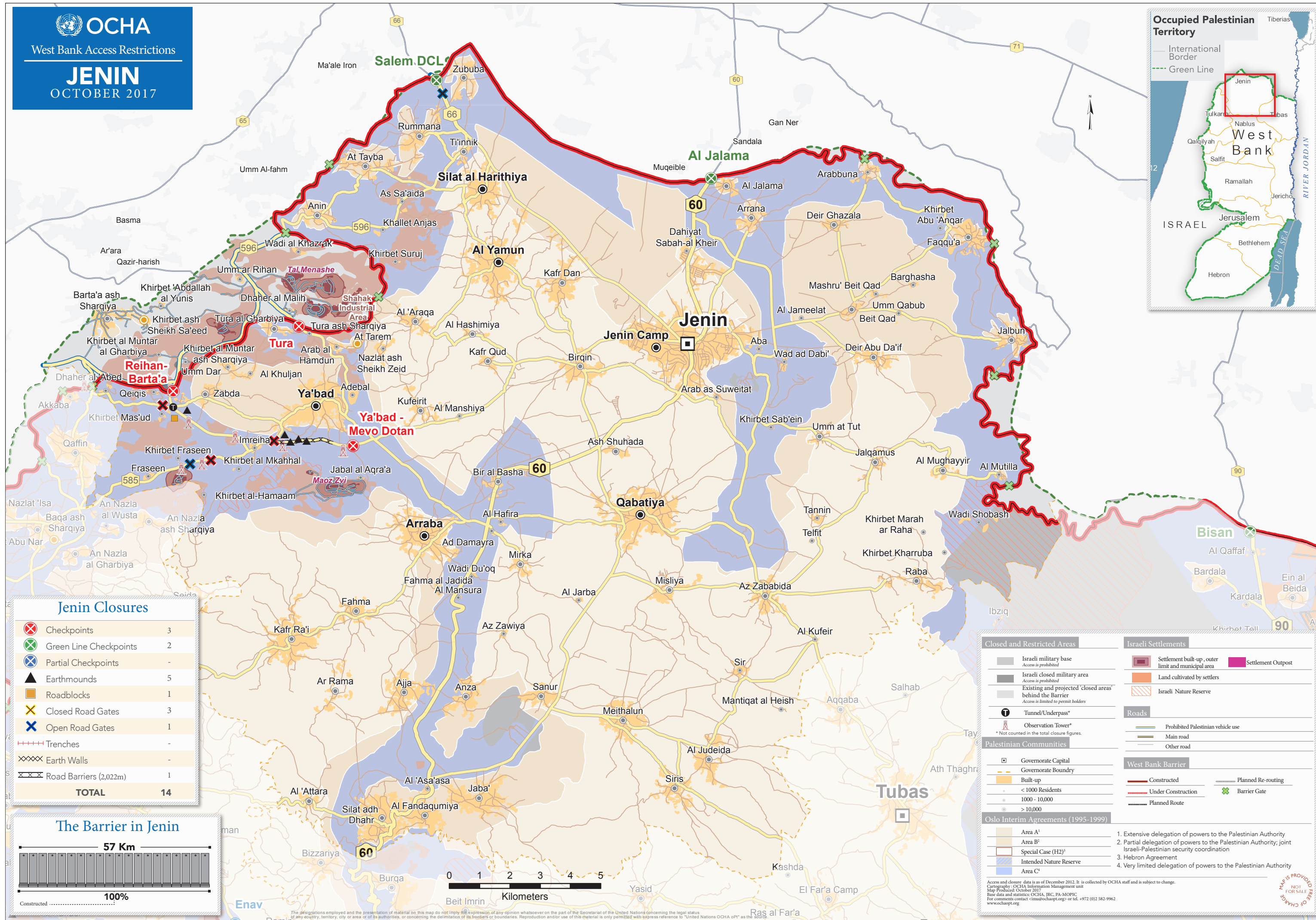
West Bank Access Restrictions

# JENIN

OCTOBER 2017

## Occupied Palestinian Territory

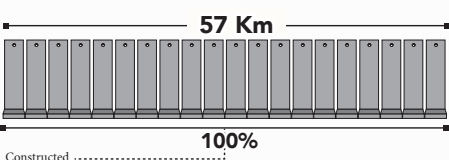
International Border  
Green Line



### Jenin Closures

⊗	Checkpoints	3
⊗	Green Line Checkpoints	2
⊗	Partial Checkpoints	-
▲	Earthmounds	5
■	Roadblocks	1
×	Closed Road Gates	3
×	Open Road Gates	1
----	Trenches	-
XXXX	Earth Walls	-
XX	Road Barriers (2,022m)	1
TOTAL		14

### The Barrier in Jenin



### Closed and Restricted Areas

■	Israeli military base Access is prohibited
■	Israeli closed military area Access is prohibited
■	Existing and projected 'closed areas' behind the Barrier Access is limited to permit holders
ⓘ	Tunnel/Underpass*
🗼	Observation Tower*
* Not counted in the total closure figures.	

### Palestinian Communities

□	Governorate Capital
□	Governorate Boundry
■	Built-up
●	< 1000 Residents
●	1000 - 10,000
●	> 10,000

### Oslo Interim Agreements (1995-1999)

■	Area A <sup>1</sup>
■	Area B <sup>2</sup>
■	Special Case (H2) <sup>3</sup>
■	Intended Nature Reserve
■	Area C <sup>4</sup>

### Israeli Settlements

■	Settlement built-up, outer limit and municipal area
■	Land cultivated by settlers
■	Israeli Nature Reserve
■	Settlement Outpost

### Roads

—	Prohibited Palestinian vehicle use
—	Main road
—	Other road

### West Bank Barrier

—	Constructed
—	Under Construction
—	Planned Re-routing
⊗	Barrier Gate
—	Planned Route

1. Extensive delegation of powers to the Palestinian Authority
2. Partial delegation of powers to the Palestinian Authority; joint Israeli-Palestinian security coordination
3. Hebron Agreement
4. Very limited delegation of powers to the Palestinian Authority

Access and closure data is as of December 2012. It is collected by OCHA staff and is subject to change.  
Cartography: OCHA Information Management Unit  
Map Produced: October 2017  
Base data and statistics: OCHA, JRC, PA-MOPIC  
For comments contact <im@ocha.org> or tel. +972 (0)2 582-9962  
www.ocha.org

MAP IS PROVIDED  
NOT FOR SALE  
FREE OF CHARGE