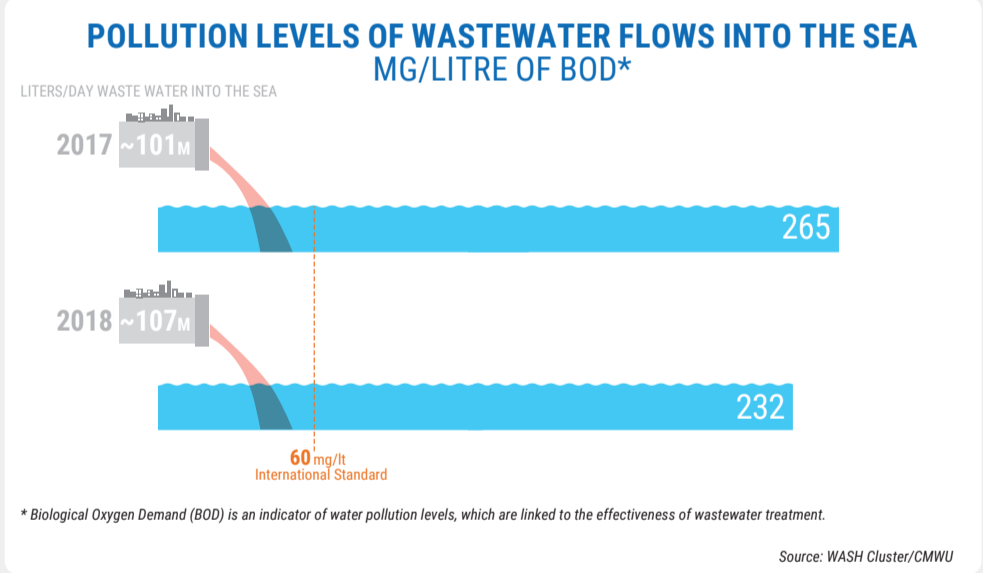
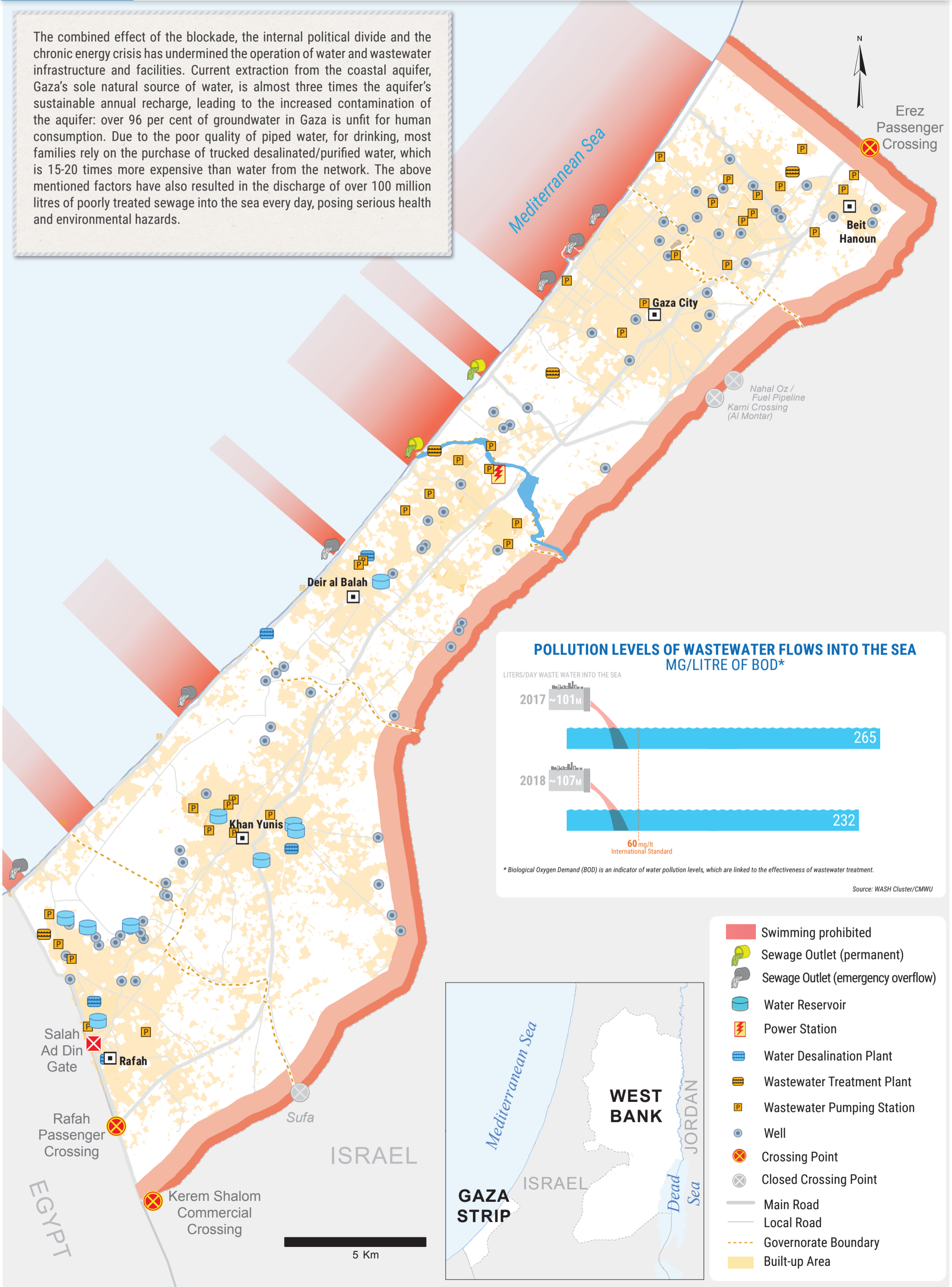


The combined effect of the blockade, the internal political divide and the chronic energy crisis has undermined the operation of water and wastewater infrastructure and facilities. Current extraction from the coastal aquifer, Gaza's sole natural source of water, is almost three times the aquifer's sustainable annual recharge, leading to the increased contamination of the aquifer: over 96 per cent of groundwater in Gaza is unfit for human consumption. Due to the poor quality of piped water, for drinking, most families rely on the purchase of trucked desalinated/purified water, which is 15-20 times more expensive than water from the network. The above mentioned factors have also resulted in the discharge of over 100 million litres of poorly treated sewage into the sea every day, posing serious health and environmental hazards.



- Swimming prohibited
- Sewage Outlet (permanent)
- Sewage Outlet (emergency overflow)
- Water Reservoir
- Power Station
- Water Desalination Plant
- Wastewater Treatment Plant
- Wastewater Pumping Station
- Well
- Crossing Point
- Closed Crossing Point
- Main Road
- Local Road
- Governorate Boundary
- Built-up Area

