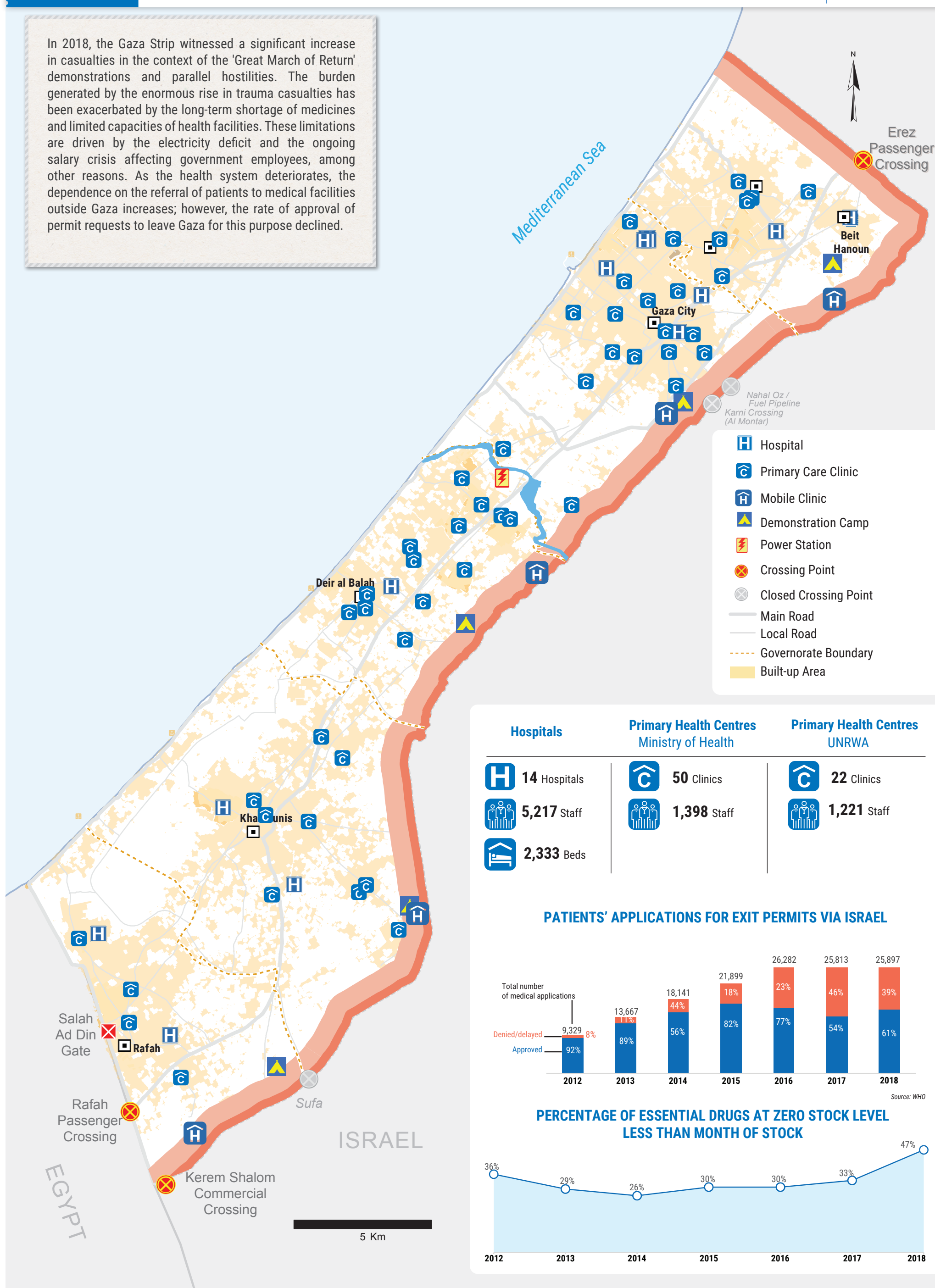


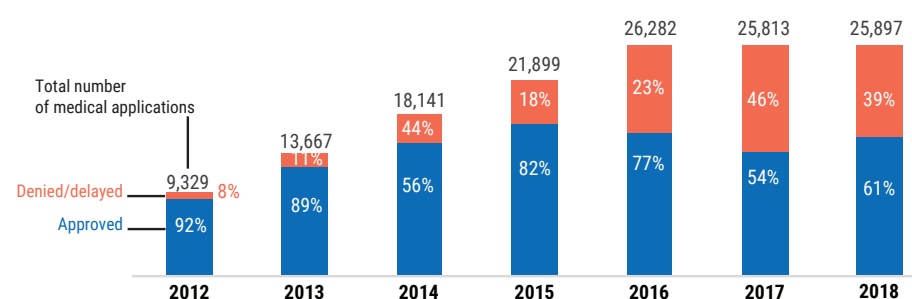
In 2018, the Gaza Strip witnessed a significant increase in casualties in the context of the 'Great March of Return' demonstrations and parallel hostilities. The burden generated by the enormous rise in trauma casualties has been exacerbated by the long-term shortage of medicines and limited capacities of health facilities. These limitations are driven by the electricity deficit and the ongoing salary crisis affecting government employees, among other reasons. As the health system deteriorates, the dependence on the referral of patients to medical facilities outside Gaza increases; however, the rate of approval of permit requests to leave Gaza for this purpose declined.



## Hospitals

Primary Health Centres  
Ministry of HealthPrimary Health Centres  
UNRWA

## PATIENTS' APPLICATIONS FOR EXIT PERMITS VIA ISRAEL

PERCENTAGE OF ESSENTIAL DRUGS AT ZERO STOCK LEVEL  
LESS THAN MONTH OF STOCK