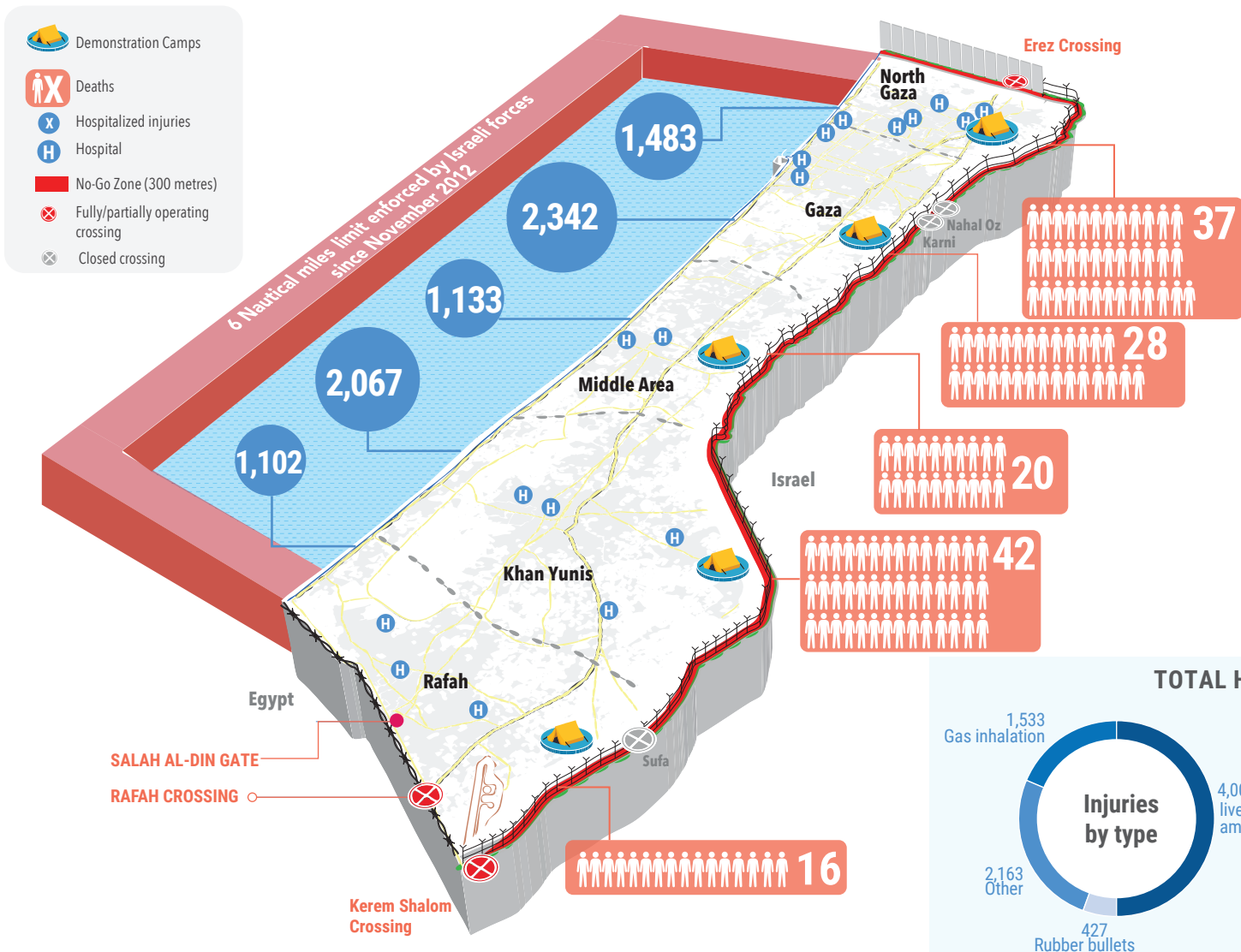
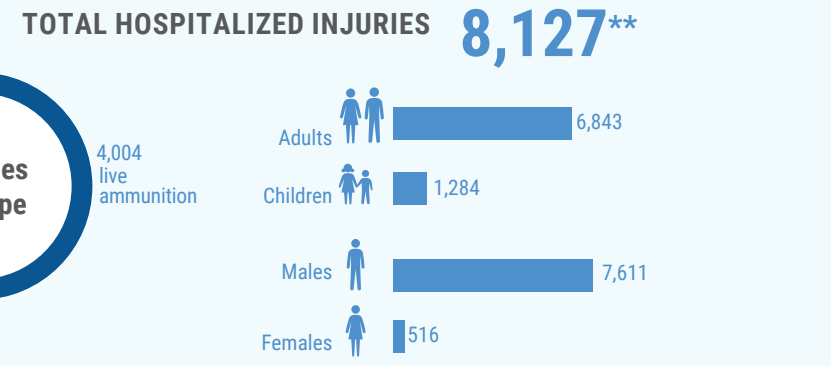
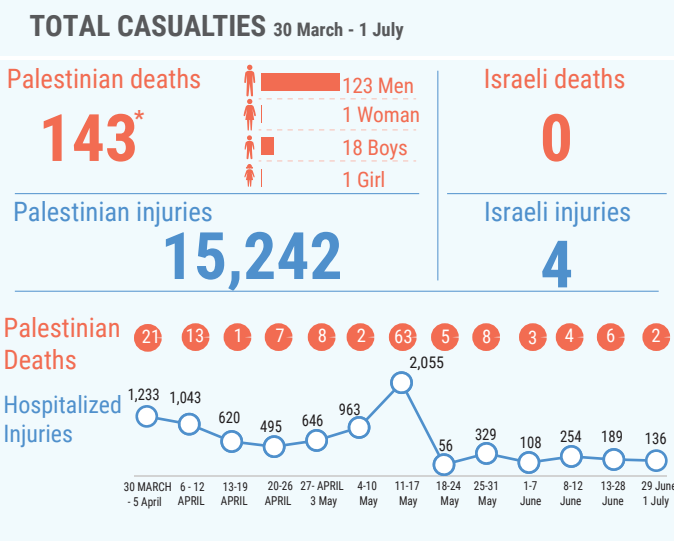


OVERVIEW

Since 30 March 2018, the Gaza Strip has witnessed an enormous increase in Palestinian casualties in the context of mass demonstrations taking place along Israel's perimeter fence with Gaza and, to a lesser extent, in the context of hostilities and other incidents. The large number of casualties among unarmed Palestinian demonstrators, including a high percentage of demonstrators hit by live ammunition, has raised concerns about excessive use of force by Israeli troops. Despite significant assistance provided, Gaza's health sector is struggling to cope with the mass influx of casualties, due to years of blockade, internal divide and a chronic energy crisis, which have left essential services in Gaza barely able to function.



- KEY HUMANITARIAN NEEDS**
- Rapid deployment of quality-assured emergency medical teams to conduct complex lifesaving surgery.
 - Procurement of essential drugs, disposables and medical equipment.
 - Enhancement of post-operative and rehabilitative care through multi-disciplinary rehabilitation teams.
 - Legal aid to address restrictions impeding medical patients from receiving treatment outside Gaza.
 - Mental health and psychological support for children and families impacted by violence.
 - Access for critical medical cases to treatment outside Gaza.
 - Monitoring and documentation of the differentiated impact of the situation on men, women, boys and girls.



Source of Palestinian casualty data: Palestinian Ministry of Health in Gaza.
Source of Israeli casualty data: Israeli media.

*This figure includes 110 Palestinians killed during the demonstrations and 33 killed in other incidents; among the latter are six people whose bodies are reportedly being withheld by the Israeli authorities. (31 March - 01 July)

**Additional 7,115 were treated in field medical trauma stabilization points.

Disclaimer: Data and analysis provided in this snapshot is based on preliminary information available. Further assessments are pending.