

# GAZA CROSSINGS' OPERATIONS STATUS: MONTHLY UPDATE - SEPTEMBER 2019

## BACKGROUND

Longstanding restrictions on the movement of people and goods to and from the Gaza Strip have undermined the living conditions of about two million Palestinians. Many of the restrictions, originally imposed by Israel in the early 1990s and also 2000s, when Israel shut down the Gaza airport and safe passage between Gaza and West Bank, were intensified after June 2007, following the Hamas takeover of Gaza, the imposition of a blockade and the closure of the Rafah crossing with Egypt. These restrictions limit access to livelihoods, essential basic services and housing, disrupt family life, and undermine people's hopes for a secure and prosperous future. In recent months, OCHA has witnessed some easing of restrictions such as the opening Kerem Shalom crossing on Fridays for the entry of Qatari-funded fuel for the Gaza Power Plant (GPP) and an increase in the number of permits issued to Palestinians classified as business people.

Interactive versions of the following charts are available at [www.ochaopt.org/gaza-crossings/](http://www.ochaopt.org/gaza-crossings/)

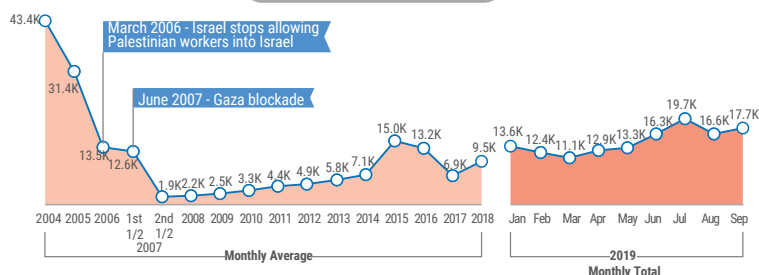


## MOVEMENT AND ACCESS OF PEOPLE\*

### EREZ CROSSING

- Opened on 25 days during daytime: from Sunday to Thursday, for the passage of Israeli issued permit holders of all authorized groups (primarily business people, patients and companions, foreign nationals and aid workers); and, on Fridays, for urgent cases and foreign nationals.
- The number of exits in September (17,715) was 22 per cent above the monthly average between January and August 2019 (14,488).
- In September 2019, Israel approved 2,019 permits for Gaza residents, including 1,028 for Palestinians classified as business people.
- The number of exits by patients and their companions (2,967) decreased by 2 per cent, compared with the monthly average between January and August 2019 (3,037).
- Israel approved 61 per cent of the 1,916 applications submitted for patient exit permits; the rest were either rejected or not answered by the time of the medical appointments (WHO).
- The number of exits by Palestinians classified as business people, which constitute the largest category, increased by 33 per cent, compared with the monthly average between January and August (12,132 vs 9,115). Some of the people included in this category are believed to be day labourers.
- The total number of Palestinians classified as business people with valid permits has increased from 1,975 in December 2018 to more than 3,835 in September 2019 but is still below the quota of 5,000 reportedly agreed between the PA and Israel (PA General Authority for Civil Affairs).

#### Crossings into Israel

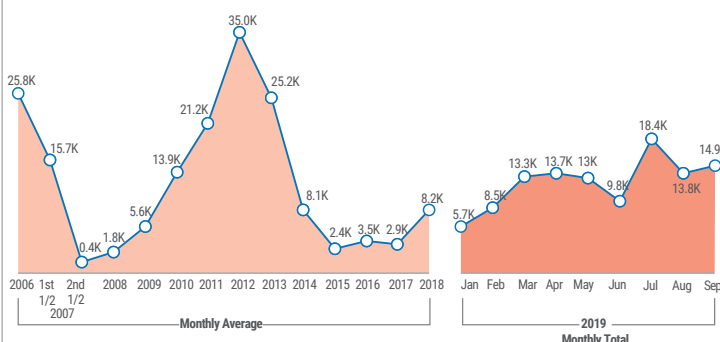


\* The figures reflect number of times people crossed, but not the actual number of people crossing.

### RAFAH CROSSING

- Opened in both directions during daytime on 22 days.\*
- A total of 14,928 crossings (6,160 entries into Gaza and 8,768 exits) were recorded in September, 24 per cent above the monthly average between January and August 2019 (12,026).
- Since the beginning of 2019, Rafah crossing has opened on 178 days, compared with 134 and 28 days respectively, during the same periods in 2018 and 2017.

#### Crossings in both directions



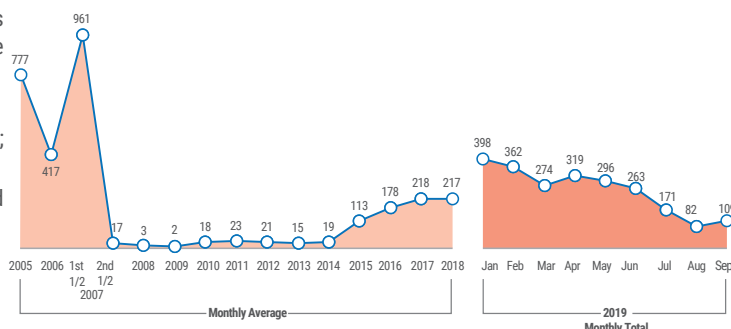
\* Since July 2018, It has been operating five days a week (from Sunday to Thursday).

## MOVEMENT OF GOODS FROM AND INTO GAZA

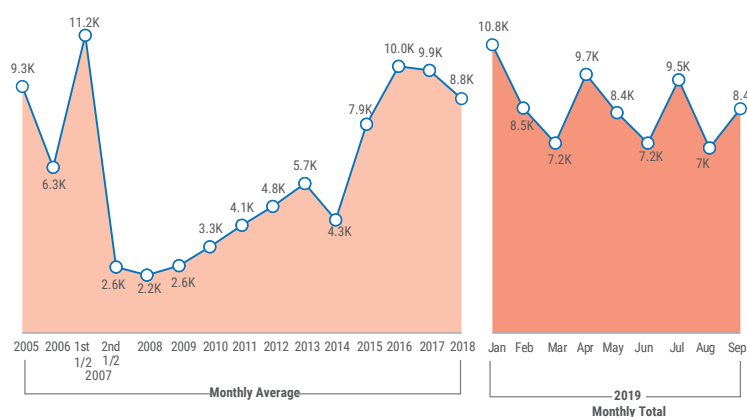
### EXIT OF GOODS

- Authorized goods exited through the Kerem Shalom crossing on 19 days.
- A total of 109 truckloads exited, similar to September 2018, but 89 per cent less than the monthly average in the first half of 2007, before the imposition of the blockade.
- Goods exited to:
  - The West Bank:** 52 truckloads of agricultural produce; 10 of fish; 10 of clothing; 4 of non-edible consumables and 3 of furniture;
  - Israel:** 27 truckloads of agricultural produce, scrap metal, furniture and garments;
  - Other destinations:** three truckloads of agricultural produce.
- Kerem Shalom is the only crossing allowing for the regular exit of goods.

#### Truckloads of goods exiting Gaza



## Truckloads entering Gaza\*

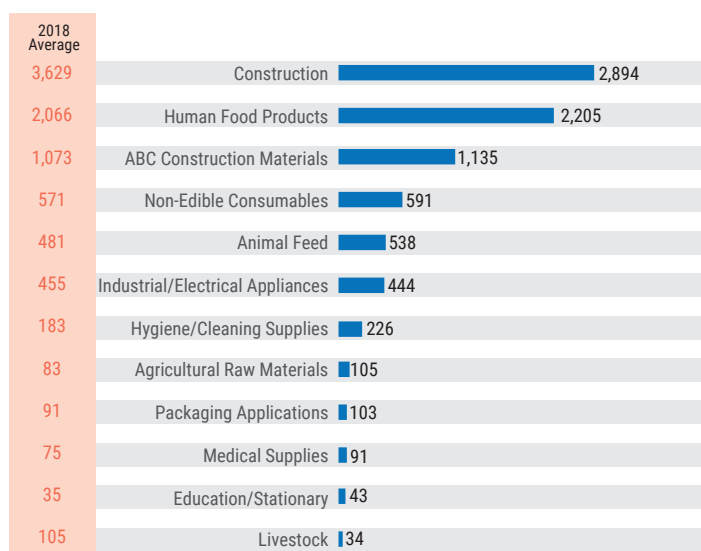


## ENTRY OF GOODS

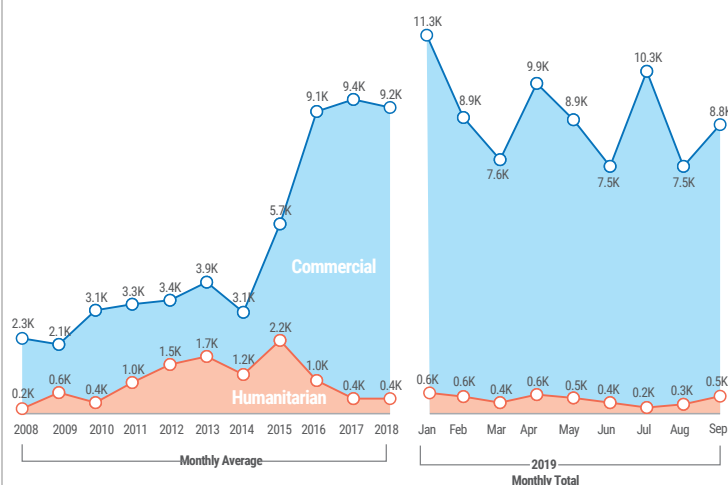
- The Kerem Shalom crossing opened for imports on 19 days (Sunday to Thursday), allowing the entry of 7,592 truckloads of goods, 5 per cent below the monthly average between January and August 2019 (8,009). The types of goods allowed in are heavily restricted by Israel, citing security concerns.
- Some six per cent of the goods entered were for humanitarian agencies.
- An additional 817 truckloads of goods entered from Egypt through the Salah ad Din Gate, 54 per cent above the monthly average between January and August 2019 (530).
- 3,517 truckloads entering through Kerem Shalom carried construction materials, constituting the largest category of imports (46 per cent).

\* Figures exclude truckloads carrying fuel.

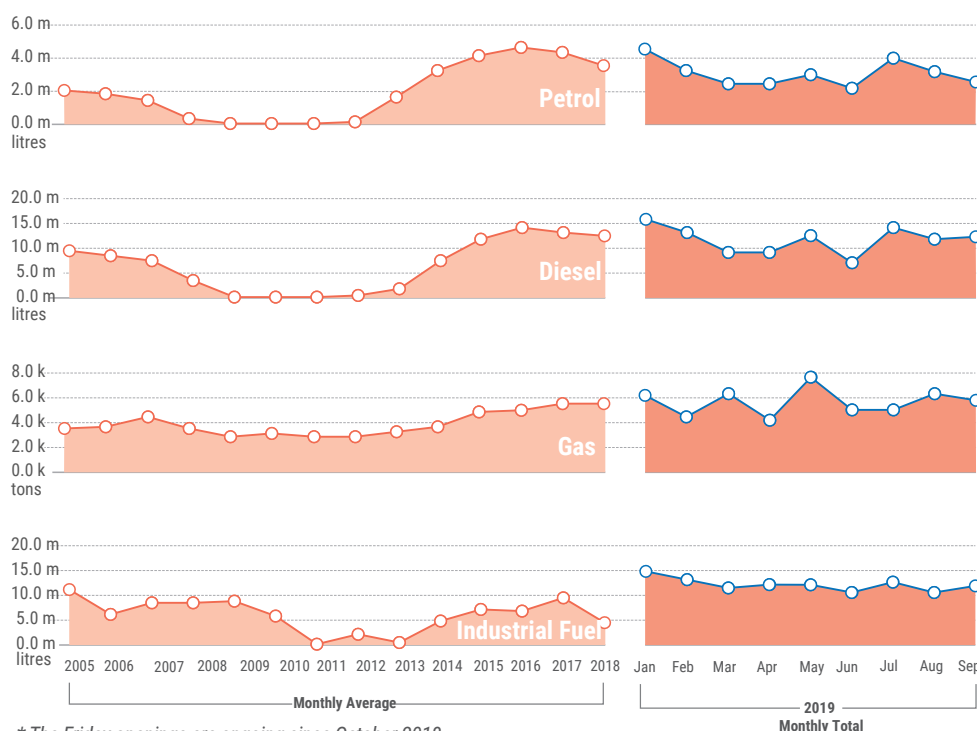
## Goods imported in September 2019 (in truckloads)



## Humanitarian vs. commercial imports (in truckloads)\*



\* Figures include truckloads carrying fuel.



\* The Friday openings are ongoing since October 2018.

## FUEL IMPORTS

Kerem Shalom operated on 24 days for the import of fuel, including on Fridays, during which Qatari-funded fuel entered for the GPP.\*

In total, this allowed the entry of:

- 3.4 million litres of diesel;
- 0.8 million litres of petrol;
- 792 tons of cooking gas; and
- 11.7 million litres of Qatari-funded fuel for the GPP.

Salah ad Din Gate operated on 13 days for the entry of fuel, allowing the entry of:

- 8.6 million litres of diesel;
- 1.7 million litres of petrol; and
- 4,622 tons of cooking gas.

The volume of petrol and diesel that entered in September was the same as the monthly average between January and August 2019.