

GAZA STRIP

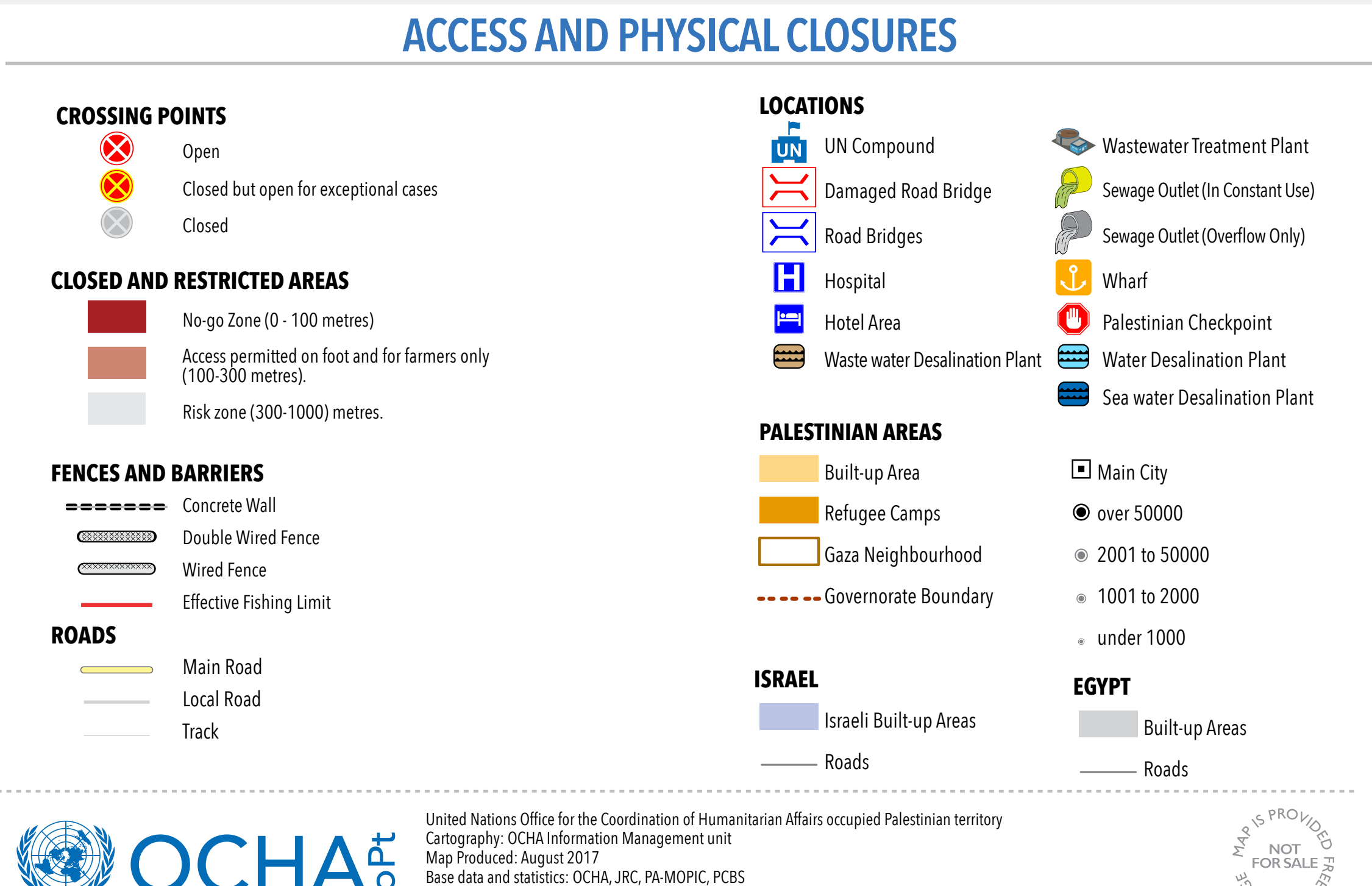
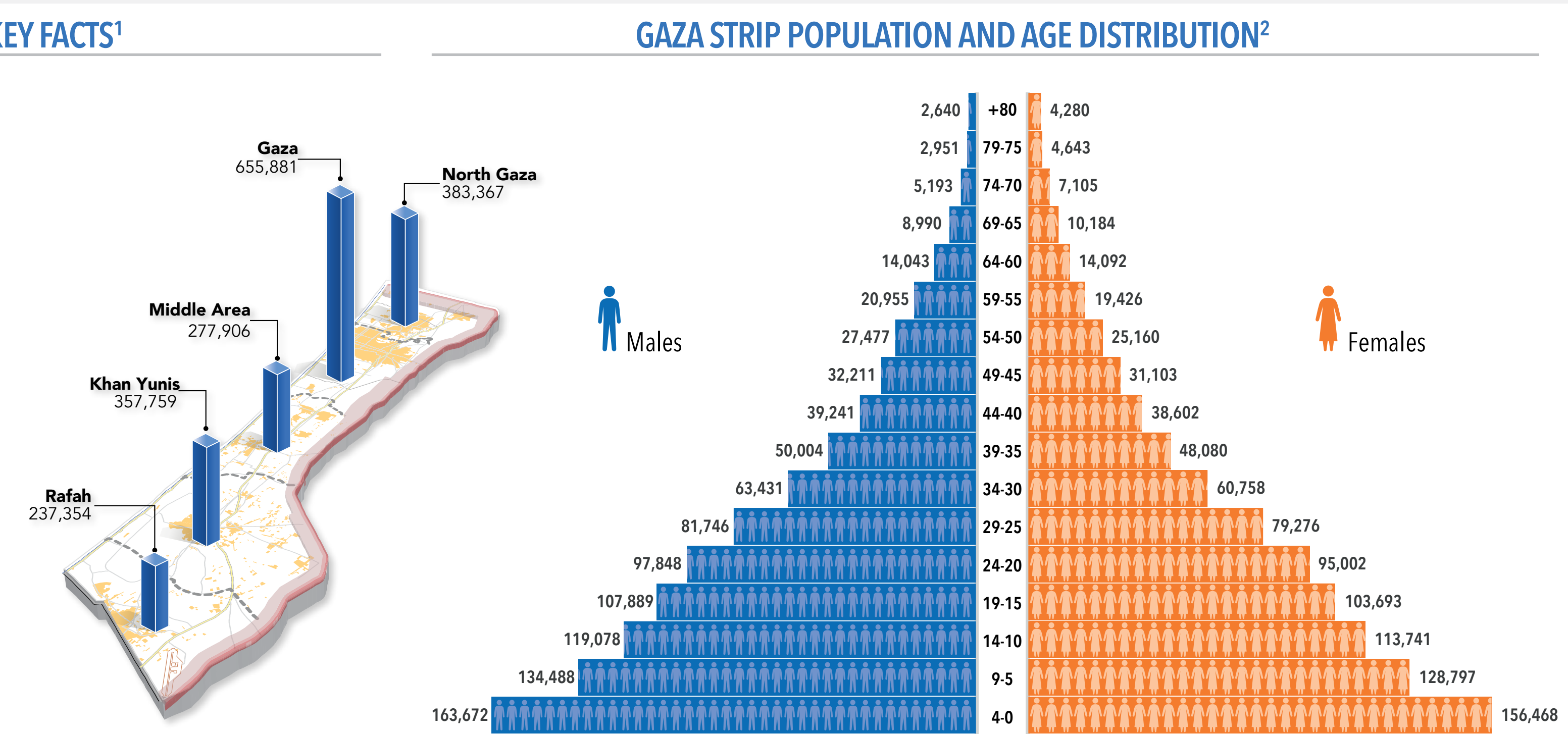
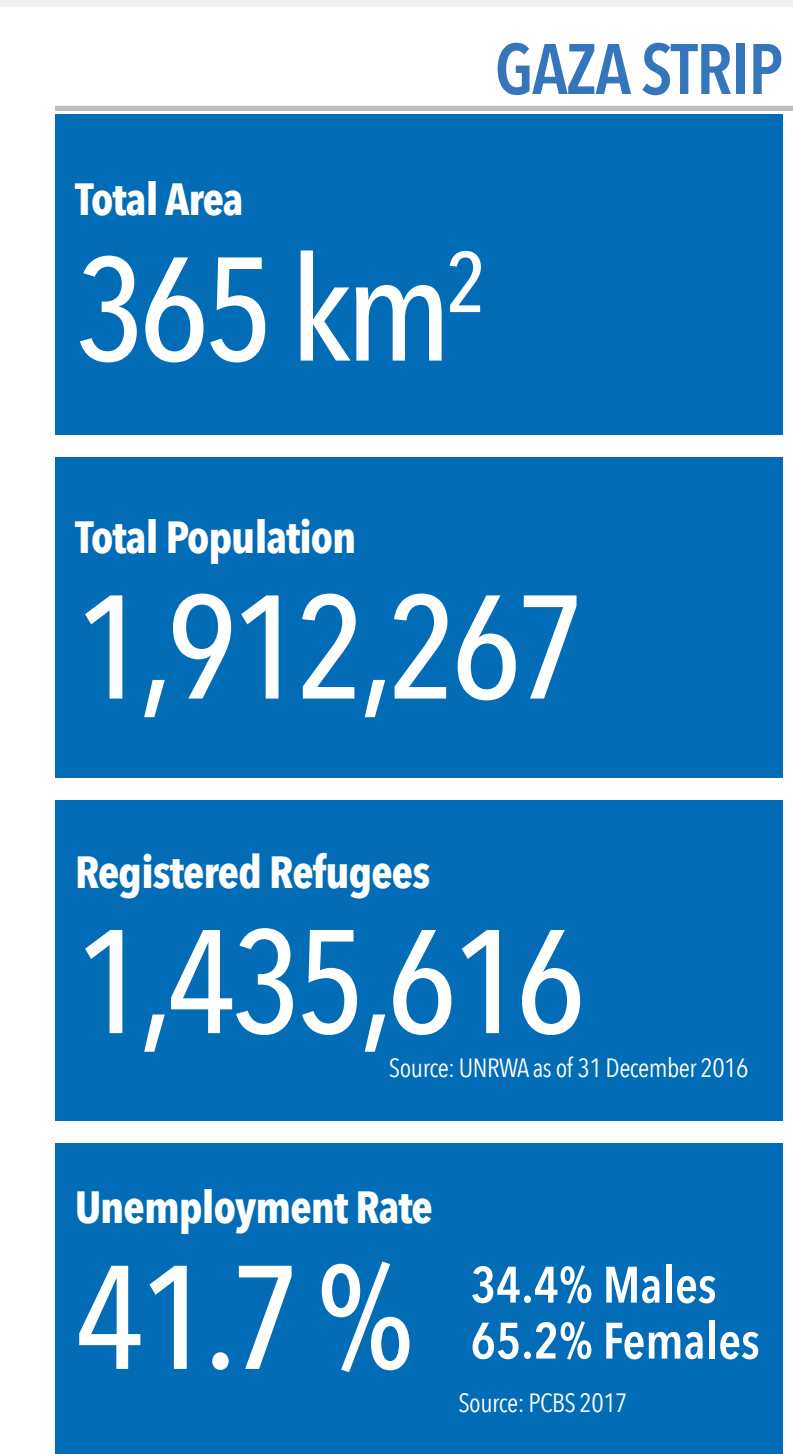
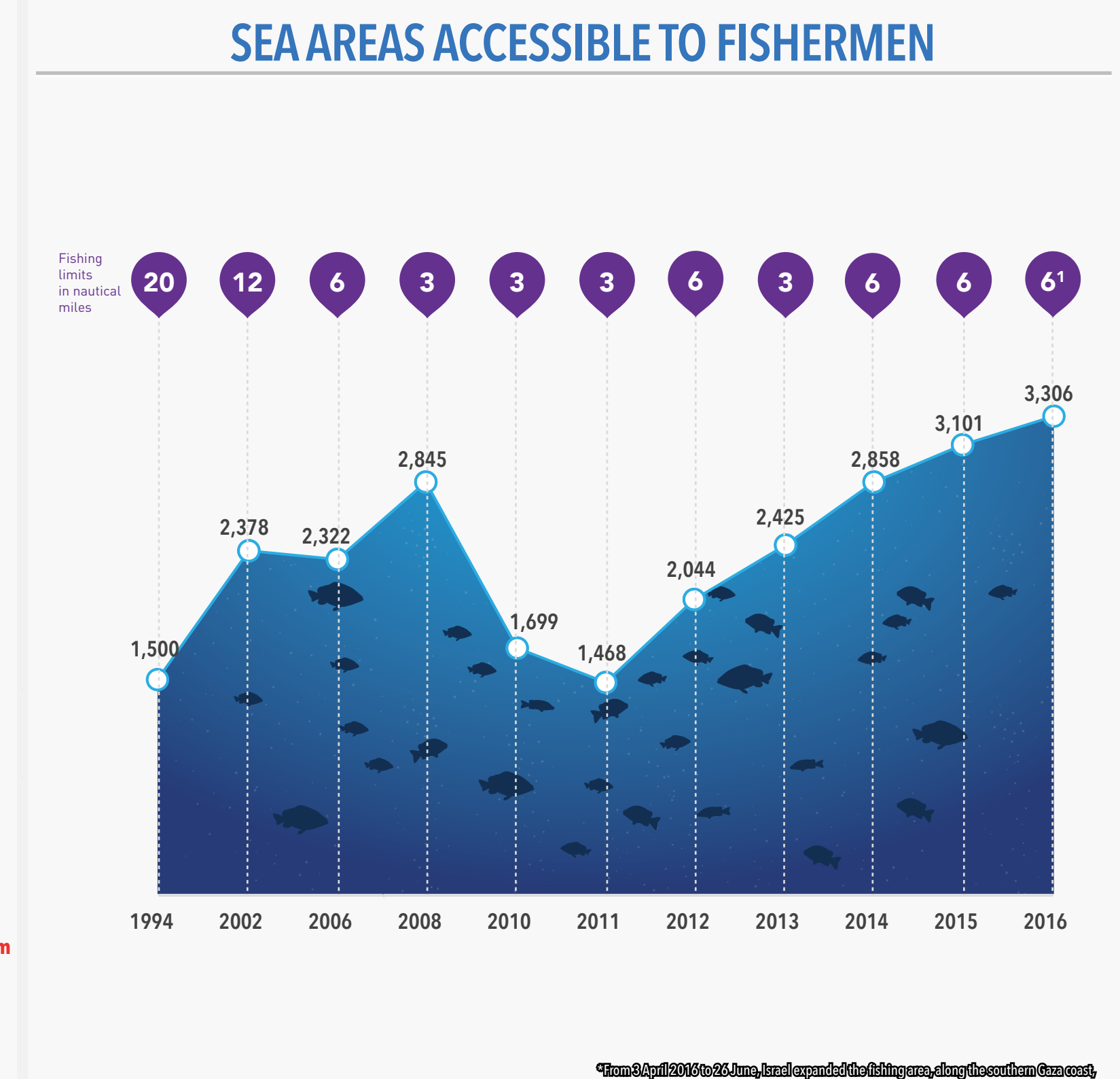
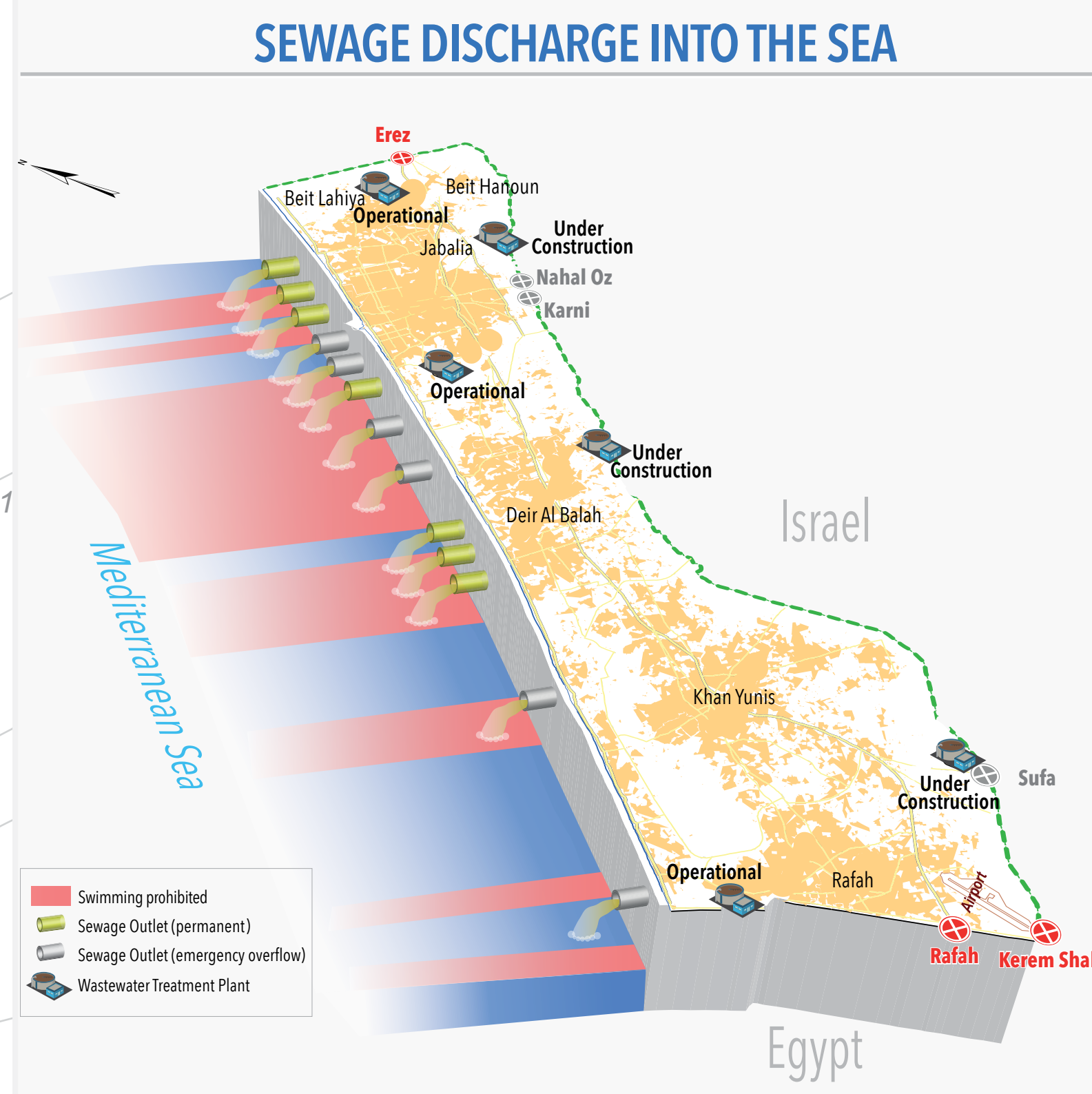
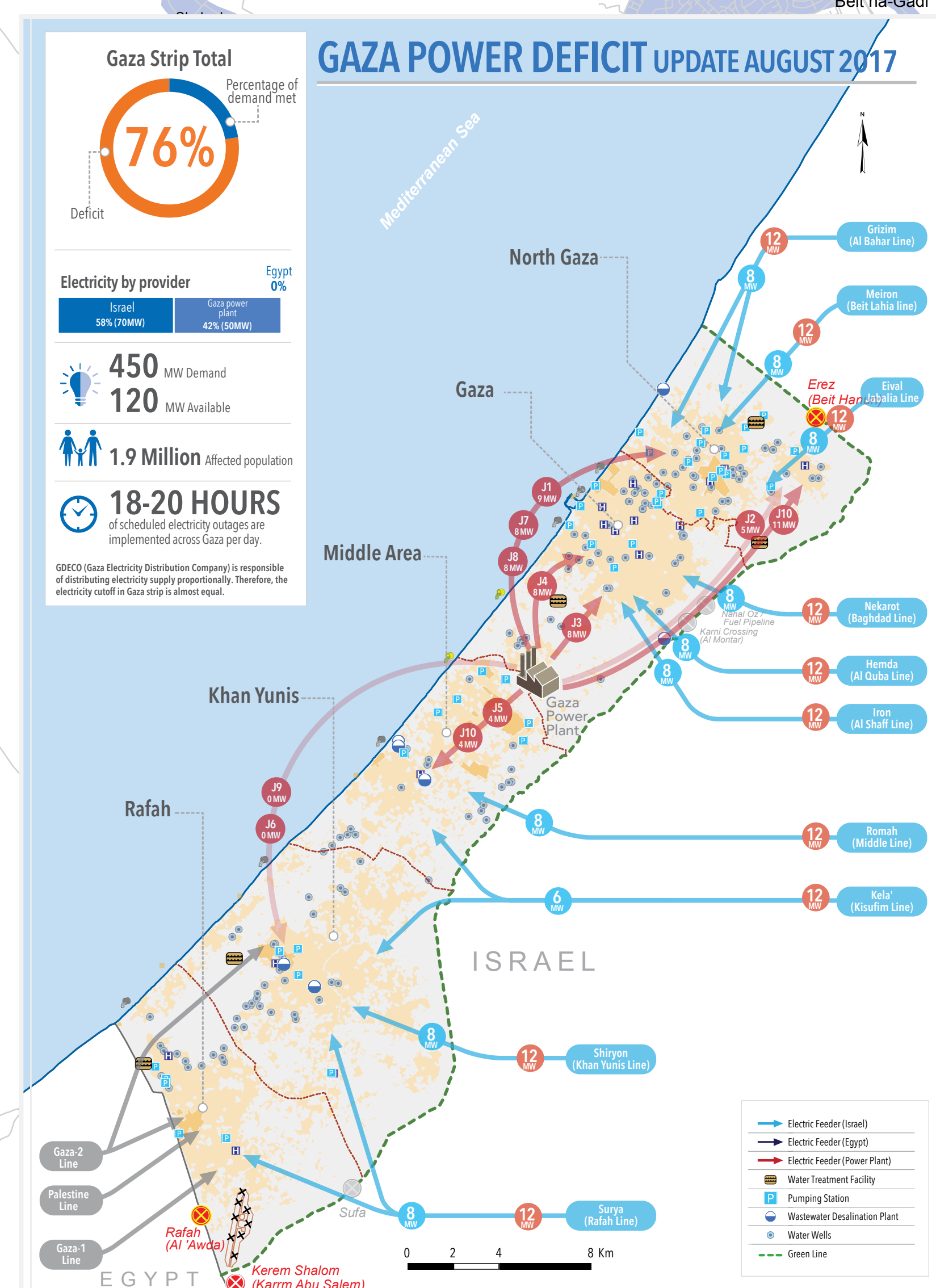
ACCESS AND MOVEMENT - AUGUST 2017



EREZ CROSSING (BEIT HANOUN)
OPEN, six days a week (daytime) for the movement of international workers and a limited number of authorized Palestinians including medical referrals, humanitarian cases, businessmen and aid workers, controlled by Israel.



6 nautical miles fishing limit enforced by Israel since November 2012



^{1,2} Source: PCBS 2016 unless otherwise specified.
The designations employed and the presentation of material on this map do not imply the expression of any opinion whatsoever on the part of the Secretariat of the United Nations concerning the legal status of any country, territory, city or area or of its authorities, or concerning the delimitation of its frontiers or boundaries. Reproduction and/or use of this material is only permitted with express reference to "United Nations OCHA" as the source.