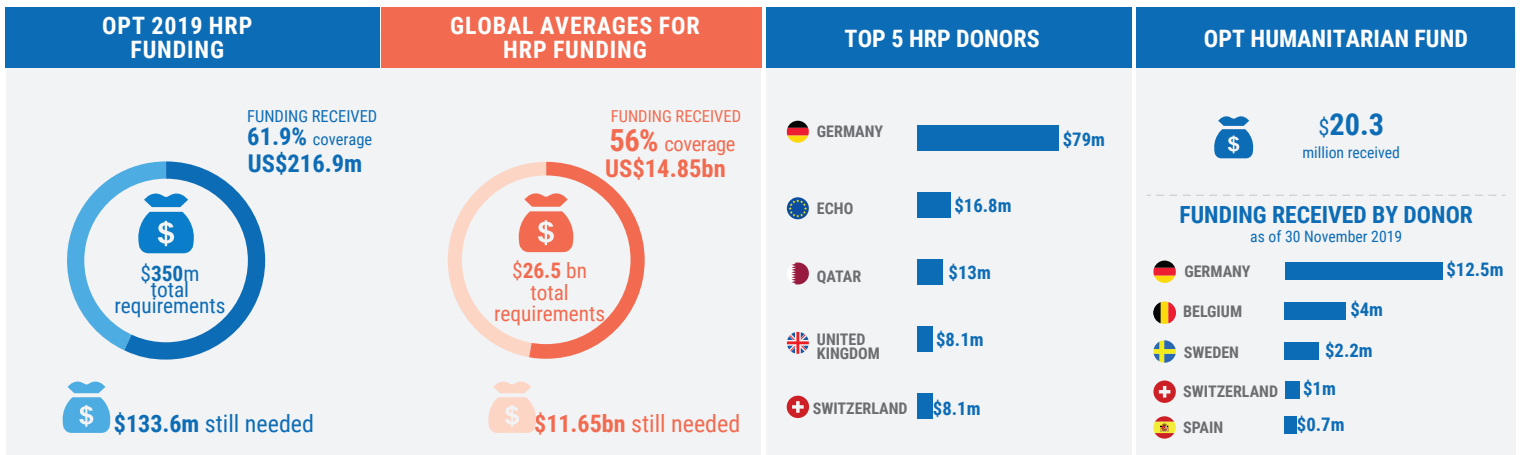


OVERVIEW

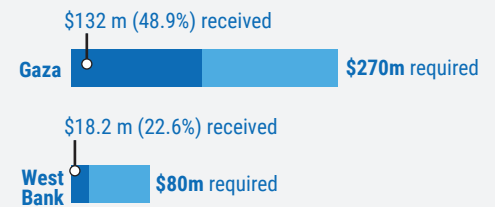
62% of the 2019 Humanitarian Response Plan (HRP) requirements are funded to date. Without full funding, humanitarian partners will struggle to respond to the needs of people affected by crisis across the oPt.

Source: Financial Tracking Service (FTS) <https://fts.unocha.org>



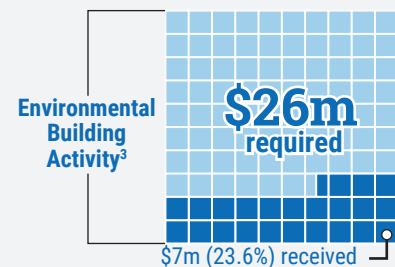
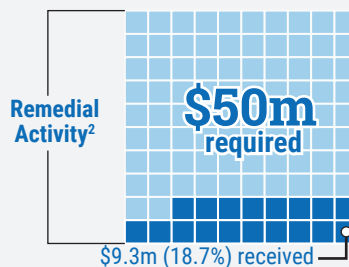
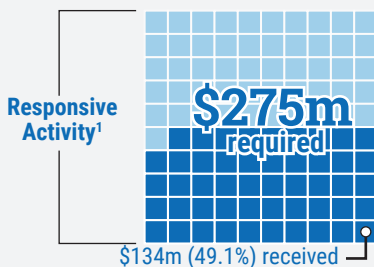
BY CLUSTER AND LOCATION*

2019 HRP requirements	Funded	Gaza	West Bank
Protection \$36m	20.2%	\$4.9m	\$2.4m
WASH \$29.5m	32.7%	\$6.2m	\$3.4m
Health \$32m	57.0%	\$16.8m	\$1.1m
Food Security \$206m	57.0%	\$107.1m	\$10.2m
Education \$15.3m	37.5%	\$4.8m	\$0.9m
Shelter and NFIs \$14.3m	11.2%	\$1.1m	\$0.5m



* This does not include some 66.7 million funding received for the HRP that did not specify a cluster

BY TYPE OF ACTIVITY*

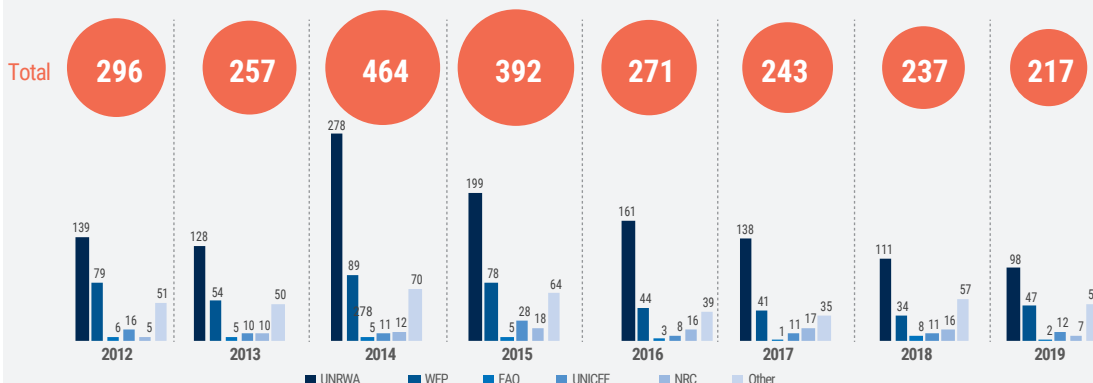


*This does not include some \$66.7 million funding received for the HRP that has yet to be allocated by type of activity.

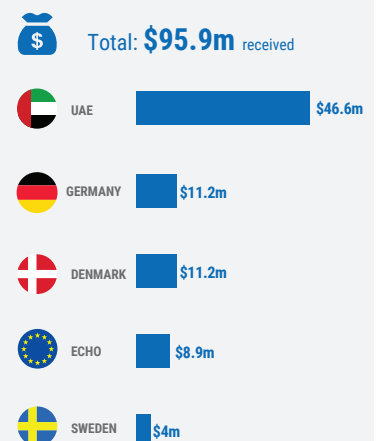
Humanitarian funding in 2019 is significantly lower as compared to the same period over the last seven years. The decline since 2018 in funding for UNRWA, the single largest humanitarian actor in the oPt, has been a key contributing factor. However, nearly all agencies in the HRP have received less funding in 2019, as compared to previous years, negatively affecting the majority of the humanitarian operation in the oPt.

YEAR-TO-DATE COMPARISON OF HRP FUNDING BY RECIPIENT

as of 30 November each year (\$ million)



TOP 5 DONORS OUTSIDE HRP



1. Activities that prevent and stop protection violations or abuses and/or alleviate immediate needs/effects of protection violations.

2. Priority activities that go beyond immediate response towards addressing time-sensitive or high impact underlying issues, advancing the top priority resilience needs, additional priority/time sensitive activities that support affected people or prevent secondary protection abuses or risks.

3. Activities that address critical gaps in the system or context, which result in widespread need.