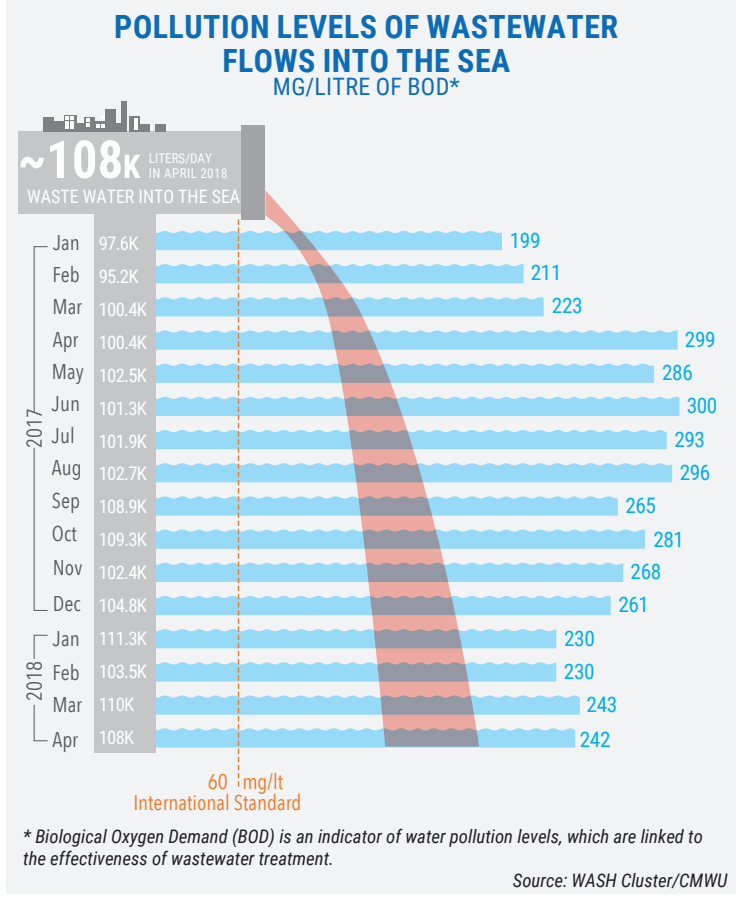
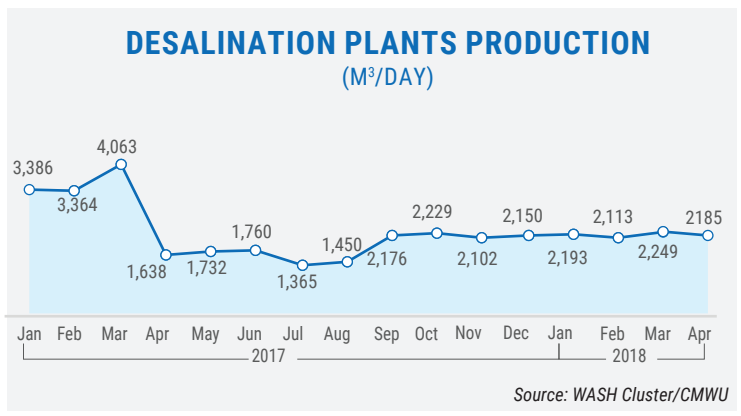
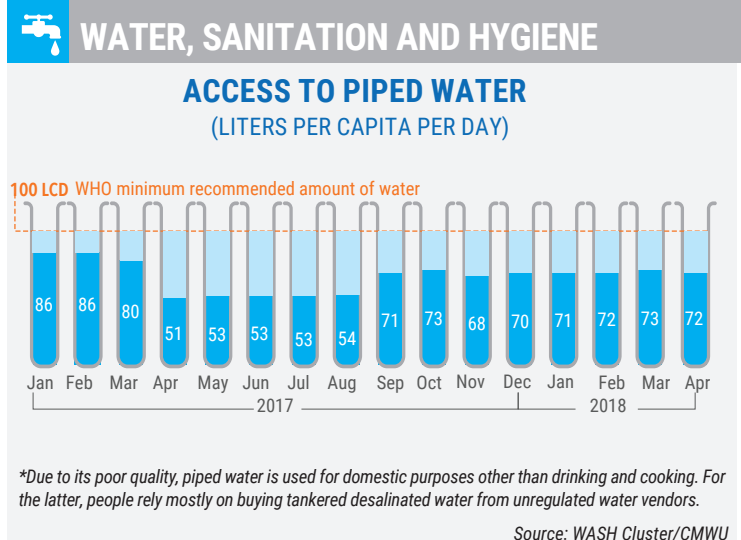
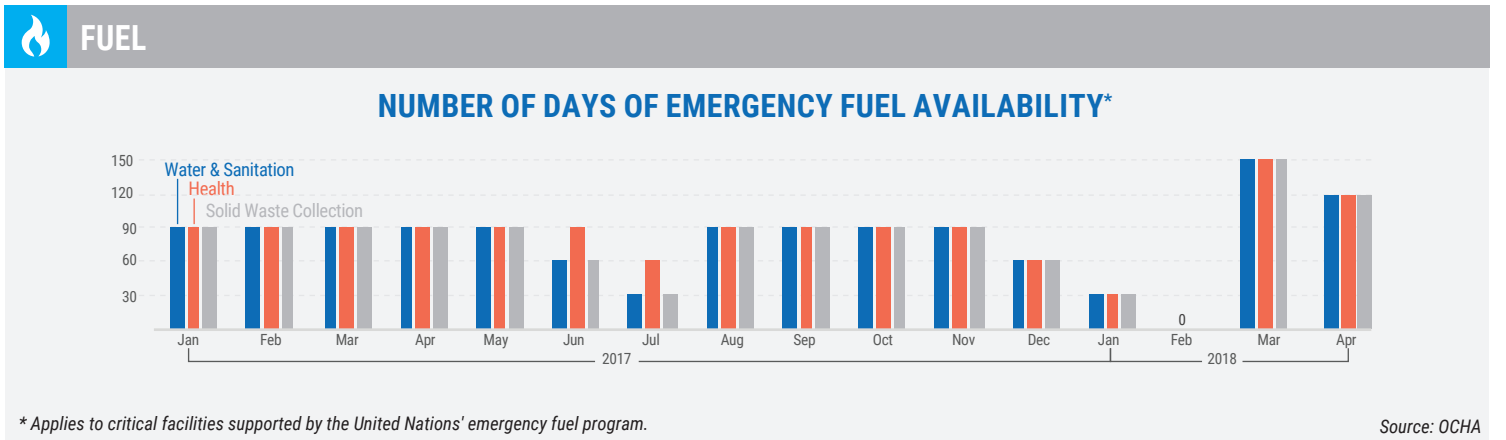
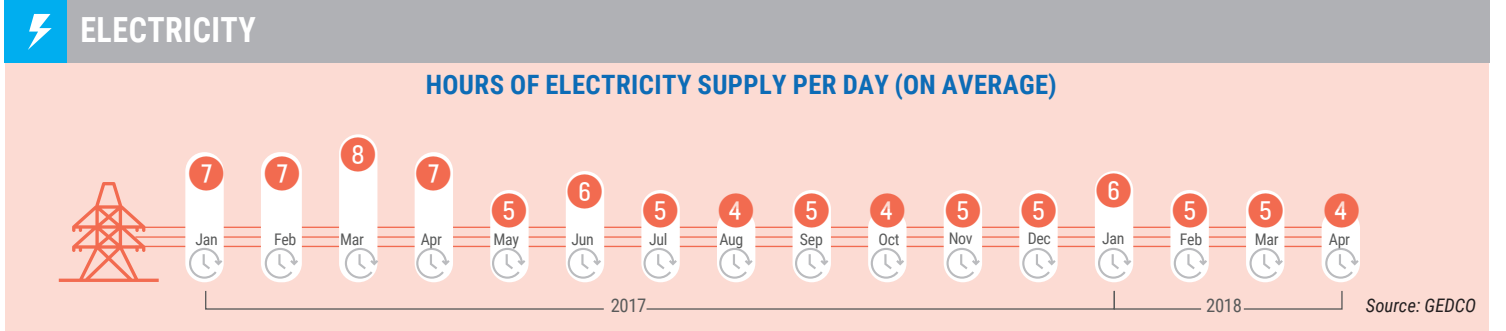
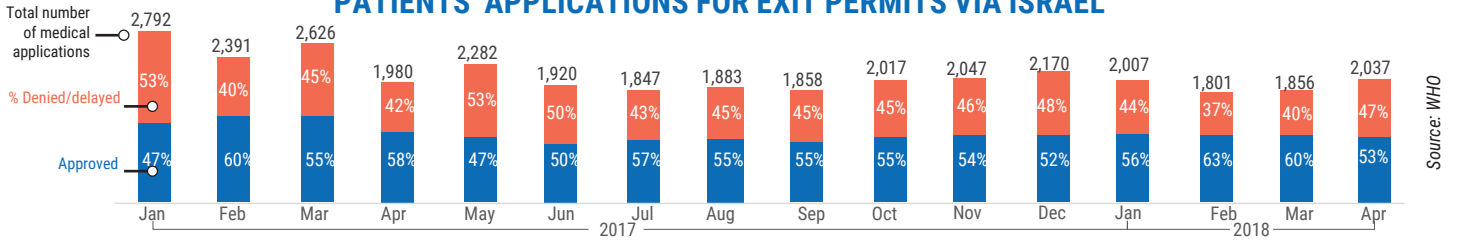


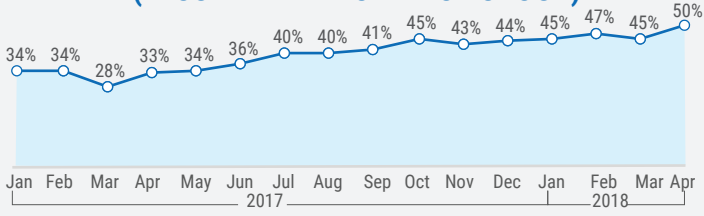
The Gaza Strip faces an unprecedented humanitarian crisis, caused by over 10 years of Israeli blockade, alongside an internal Palestinian divide, which worsened in 2017, and restrictions imposed by the Egyptian authorities on Rafah Crossing. These developments have triggered further deterioration in the humanitarian situation, impacting the availability of essential services and eroding the livelihoods of Gaza's two million residents. The following indicators were identified by the Humanitarian Country Team (HCT) to monitor the evolution of the crisis, trigger humanitarian action and prevent further deterioration.



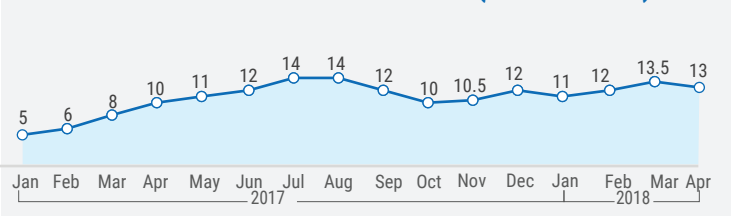
PATIENTS' APPLICATIONS FOR EXIT PERMITS VIA ISRAEL



PERCENTAGE OF DRUGS AT ZERO STOCK LEVEL* (LESS THAN A MONTH OF STOCK)

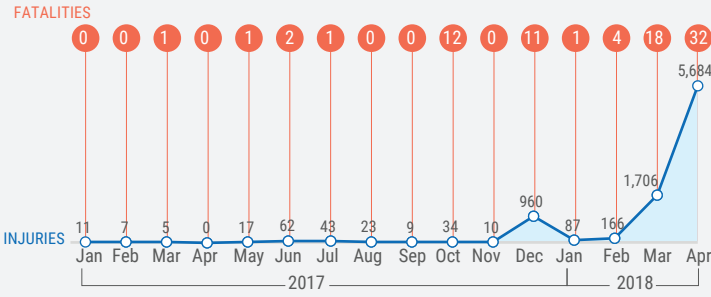


WAITING TIME FOR EAR-NOSE-THROAT SURGERY AT SHIFA HOSPITAL (IN MONTHS)

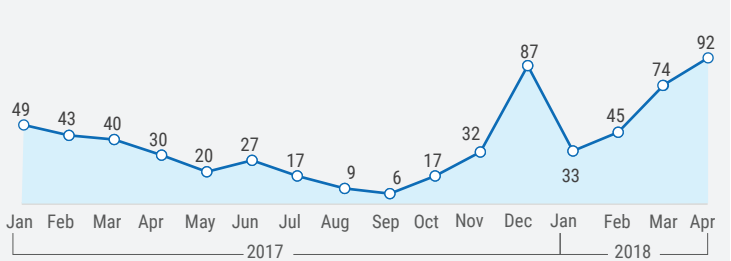


PROTECTION

CASUALTIES*

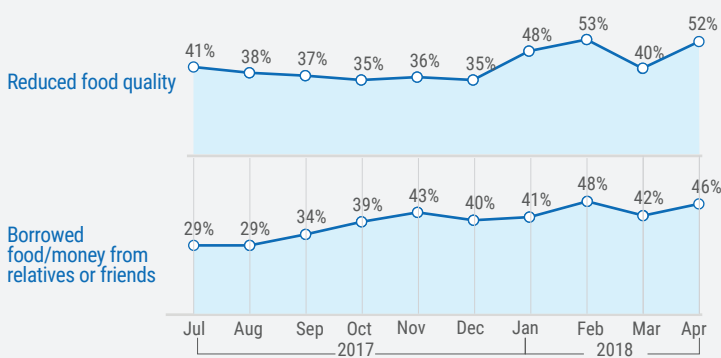


SHOOTING INCIDENTS IN ACCESS RESTRICTED AREA SEA/LAND*

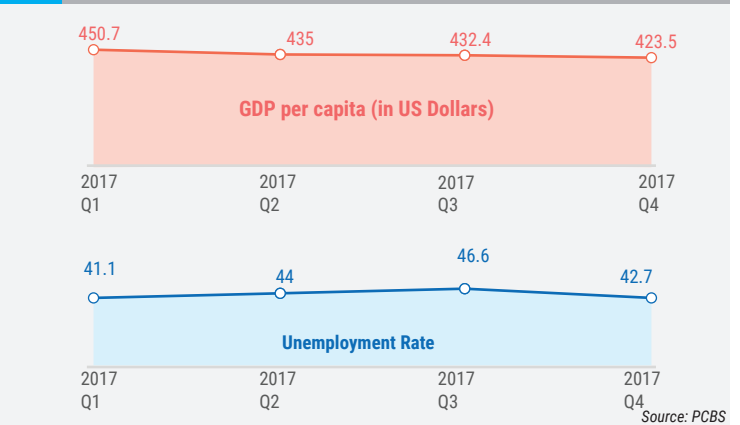


FOOD-SECURITY

RELIANCE ON FOOD INSECURITY COPING MECHANISMS*

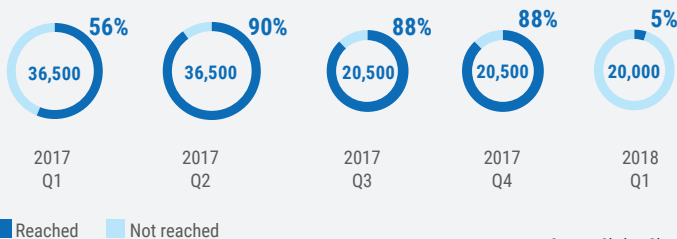


MACROECONOMIC INDICATORS



SHELTER

SHELTER CASH ASSISTANCE TO ELIGIBLE IDPS (2014 HOSTILITIES)



EDUCATION

RATE OF TEACHER ABSENTEEISM AT PA SCHOOLS

