



Demolition of livelihood structures in Jabal al Mukabbir in East Jerusalem on 29 April. Photo by OCHA.

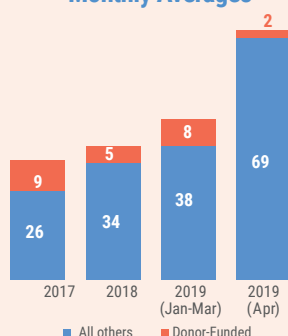
Photo by OCHA

## HIGHLIGHTS

- April saw the highest number of demolitions in a single month in more than two years.
- Over 50 per cent of all demolitions this year occurred in East Jerusalem.
- Two donated structures demolished or seized and 11 others at risk.

## STRUCTURES DEMOLISHED/SEIZED

### Monthly Averages



## APRIL FIGURES

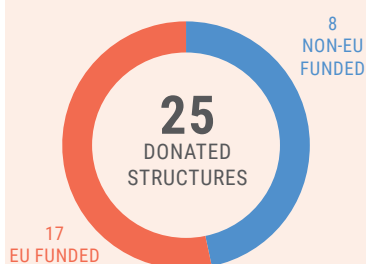
### STRUCTURES TARGETED

East Jerusalem	58
Area C	9
Area B	2
Area A	2

### PEOPLE IMPACTED

Displaced	75
Affected	313

## ASSISTANCE DEMOLISHED/SEIZED IN 2019



## OVERVIEW

In April, 71 Palestinian-owned structures were demolished or seized, displacing 75 people and affecting the livelihoods of over 300 others. This month's total is the highest number of structures demolished in a single month in more than two years. All but four of the structures were demolished due to the lack of building permits, which are virtually impossible for Palestinians to obtain, due to the restrictive planning regime applied by Israel in Area C and in East Jerusalem.

This month's increase was driven by demolitions in East Jerusalem, where 58 structures (see map below), or around 80 per cent of all structures, were demolished.\* Since the beginning of the year, 106 structures have been demolished in East Jerusalem, accounting for over half the structures demolished so far (compared to 40 per cent in the equivalent period in 2018). Also, over two-thirds of the recorded displacement in April occurred in East Jerusalem, due to the demolition of 21 residences. In a statement issued on 3 May, UN officials called for an immediate halt to demolitions in East Jerusalem and for respect for international law.

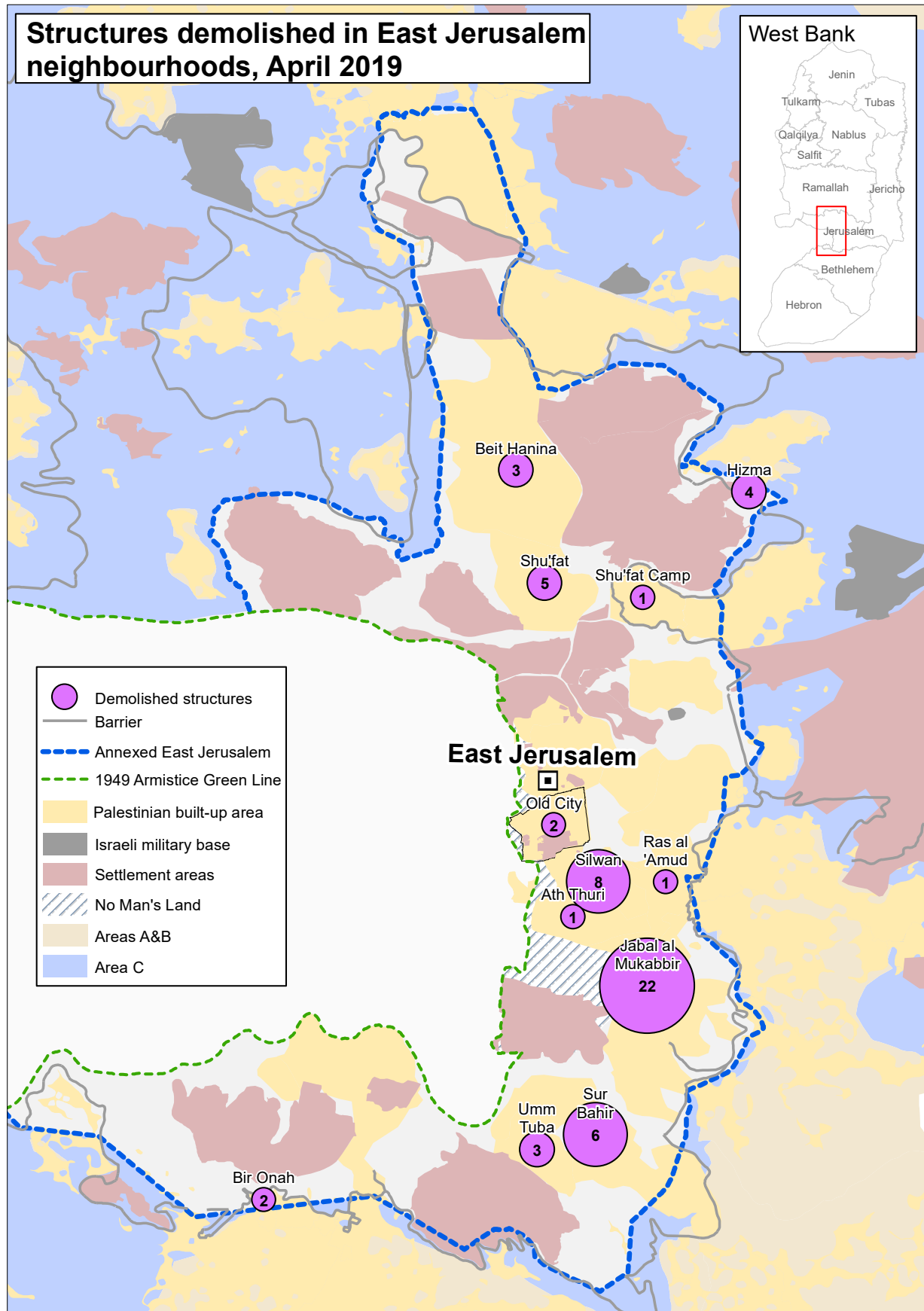
More than 50 per cent of the demolitions in East Jerusalem took place in one day, 29 April, including 22 structures in the Jabal al Mukabbir neighbourhood, five in Sur Bahir, three in Umm Tuba and one in Ath Thuri. The next day, four more structures were demolished in the Wadi Yasul area in Silwan, where almost all of the structures in the neighbourhood are at a heightened risk of demolition following the near complete exhaustion of efforts to protect their homes, placing over 550 people at risk of displacement.

By contrast, April recorded the lowest number of demolitions in Area C, nine, since June 2018. Four communities were affected, including Susiya in Hebron (4), Al Khader in Bethlehem (3), Khirbet Jubara in Tulkarm (1) and Majdal Bani Fadel in Nablus (1).

\* This figure does not include five structures, which were partially demolished.

Two donor-funded structures were demolished or confiscated this month, both donated by the EU and its member states, bringing to 25 the total number of such structures since the beginning of the year, or 12 per cent of the total structures targeted (209). A further 11 structures funded by the EU were placed at risk this month.

Also this month, four structures were demolished on punitive grounds, including two apartments in Area A in Hebron city and two other residences in Area B in the villages of Kobar (Ramallah) and Az Zawiya (Salfit). The residences belonged to families of Palestinians who were accused of, or charged with, killing Israelis in the West Bank. So far in 2019, six residences have been demolished on the same grounds.



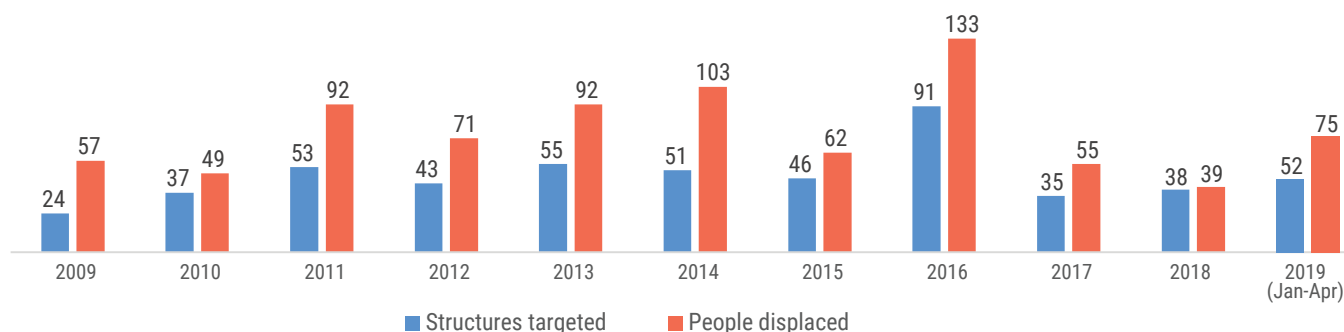
## ANNEX I: WEST BANK DEMOLITIONS / SEIZURES / SEALINGS - APRIL 2019

	Structures demolished	People displaced*		People Affected**	
		All	Children	All	Children
East Jerusalem	58	52	31	296	149
Area C	9	10	0	17	3
Area B	2	9	6	0	0
Area A	2	4	0	0	0
<b>TOTAL</b>	<b>71</b>	<b>75</b>	<b>37</b>	<b>313</b>	<b>152</b>

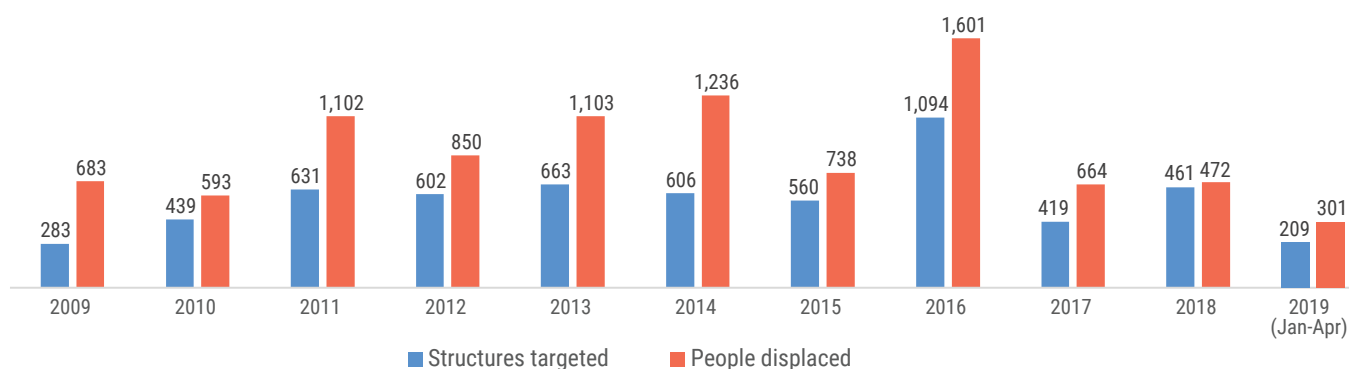
\* Includes all people who had a structure used as their habitual place of residence demolished.

\*\* Includes all people who had any of their property, other than their residence, demolished. Displaced and affected are mutually exclusive categories, i.e. people counted under the former are not included in the latter.

### STRUCTURES TARGETED AND PEOPLE DISPLACED-MONTHLY AVERAGES



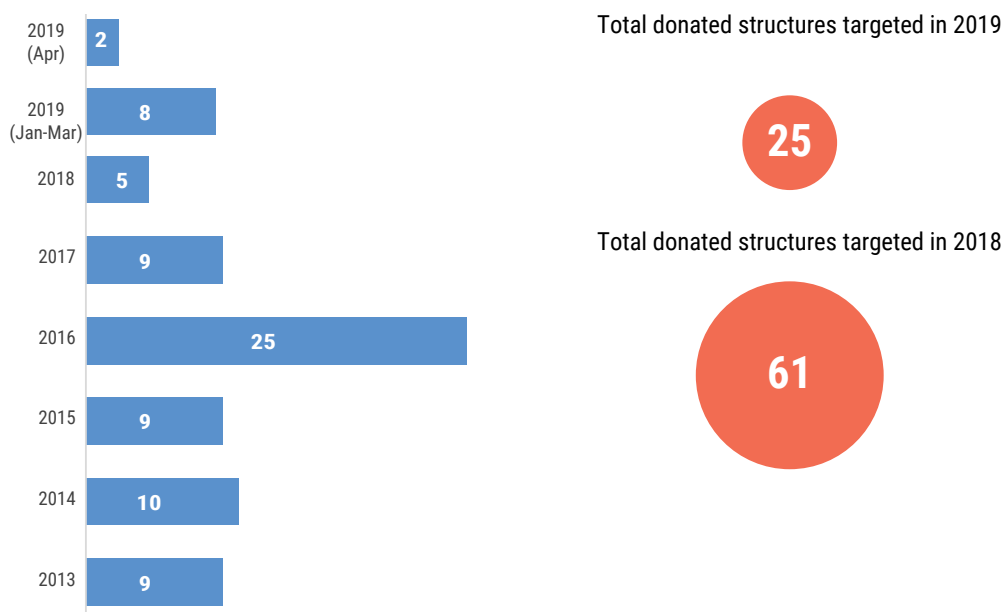
### STRUCTURES TARGETED AND PEOPLE DISPLACED-TOTALS



## ANNEX II: DEMOLITION/SEIZURE OF DONOR-FUNDED STRUCTURES - APRIL 2019

Date	Community	Governorate	Type of structure	Number of structures	Type of incident	Estimated cost in Euros
16 Apr	Hizma	Jerusalem	1 greenhouse	1	Demolition	2,707
11 Apr	Majdal Bani Fadel	Nablus	1 metal storage shed	1	Confiscation	2,178
<b>Total</b>				<b>2</b>		<b>4,885</b>

### MONTHLY AVERAGE DONOR-FUNDED STRUCTURES TARGETED



## ANNEX III: DEMOLITION OR STOP-WORK ORDERS AFFECTING DONOR-FUNDED STRUCTURES - APRIL 2019

Date	Community	Governorate	Type of structure	Number of structures	Type of incident	Estimated cost in Euros
29 Apr	Ein al Beida	Tubas	Solar panel (water pumping system)	1	SWO (Stop-work order)	23,163
29 Apr	Khirbet Yarza	Tubas	800 metre-long agricultural road	1	Stop damaging archeological site order	9,200
7 Apr	Umm Fagarah	Hebron	3 residential caravans and 1 residential tent	4	DO (Demolition order)	19,854
7 Apr	Ar Rakeez	Hebron	4 residential shelters	4	SWO	10,028
7 Apr	Ein ar Rashash	Ramallah	Access road (1,500m)	1	SWO	41,463
<b>Total</b>				<b>11</b>		<b>103,708</b>