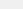


Prepared at the request of the Humanitarian Emergency Policy Group (HEPG) 28 September 2004

Road Network

- Main or Regional Roads
 Proposed Roads (Planned and Under Construction)
 Underpasses (Planned & Under Construction)

*Road proposed and construction in the West Bank
based on Israeli Civil Administration map released on
the 5th of September 2004*

Checkpoints

- Permanent Checkpoint
- Periodically Manned Checkpoint

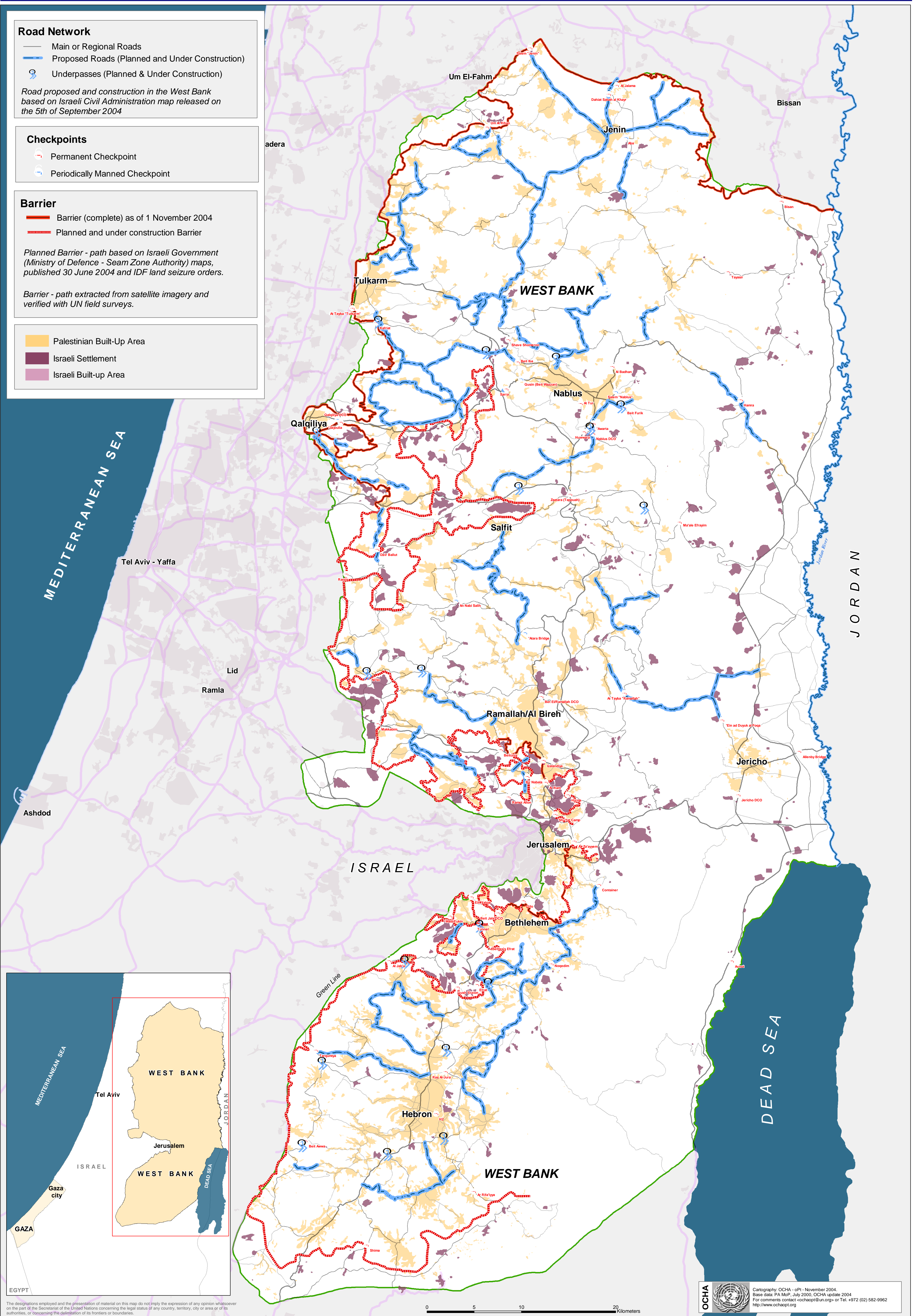
Barrier

- Barrier (complete) as of 1 November 2004
 Planned and under construction Barrier


Planned Barrier - path based on Israeli Government (Ministry of Defence - Seam Zone Authority) maps, published 30 June 2004 and IDF land seizure orders.

Barrier - path extracted from satellite imagery and verified with UN field surveys.

- Palestinian Built-Up Area
- Israeli Settlement
- Israeli Built-up Area



The designations employed and the presentation of material on this map do not imply the expression of any opinion whatsoever on the part of the Secretariat of the United Nations concerning the legal status of any country, territory, city or area or of its authorities, or concerning the delimitation of its frontiers or boundaries.

OCHA  Cartography: OCHA - oPt - November 2004.
Base data: PA MoP, July 2000, OCHA update 2004
For comments contact <ochaopt@un.org> or Tel. +972 (02) 582-9962
<http://www.ochaopt.org>