



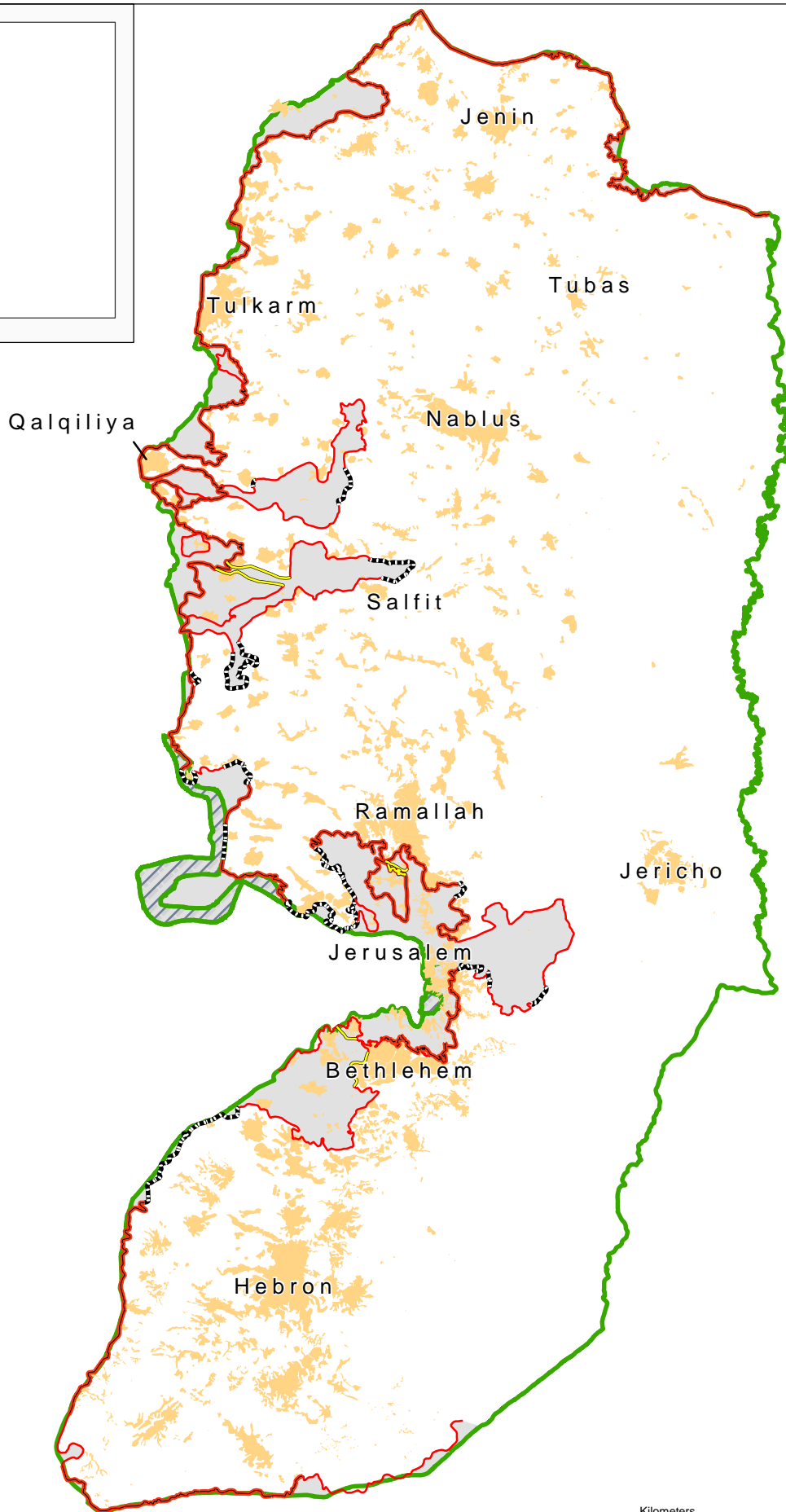
West Bank Barrier

CAP 2006 - Revised Emergency Appeal

May 2006

LEGEND

- COMPLETED - 362 KM
- - - UNDER CONSTRUCTION - 88 KM
- PLANNED - 253 KM*
- TOTAL BARRIER LENGTH: 703 KM**
- ROAD PROTECTION - 25 KM*
- *Included in planned Barrier length
- AREA LOCATED BETWEEN THE BARRIER AND THE GREEN LINE



BARRIER ROUTE

The Barrier's total length is 703 km, approximately twice the length of the 1949 West Bank Armistice Line (Green Line) adjacent to Israel. 20% of the Barrier's length runs along the Green Line

BARRIER AREA

AREA AFFECTED

10.1% of the West Bank and East Jerusalem

142,130 acres or
57,518 hectares

Barrier route extracted from satellite imagery and verified with field observations - as of 15 May 2006.

Planned Barrier route based on Israeli Government map (Ministry of Defence/Seam Zone Authority), 30 April 2006.

0 2 4 6 8 10 20
Kilometers