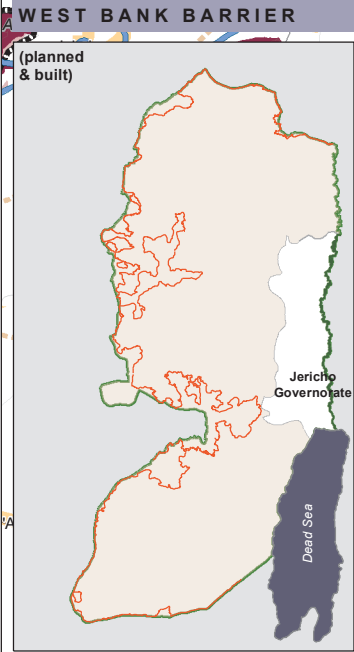
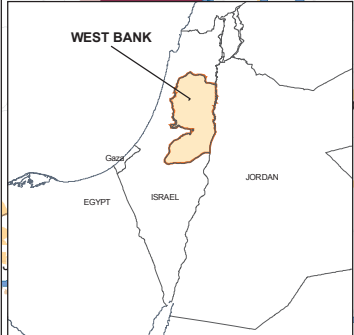


West Bank Closures - Jericho

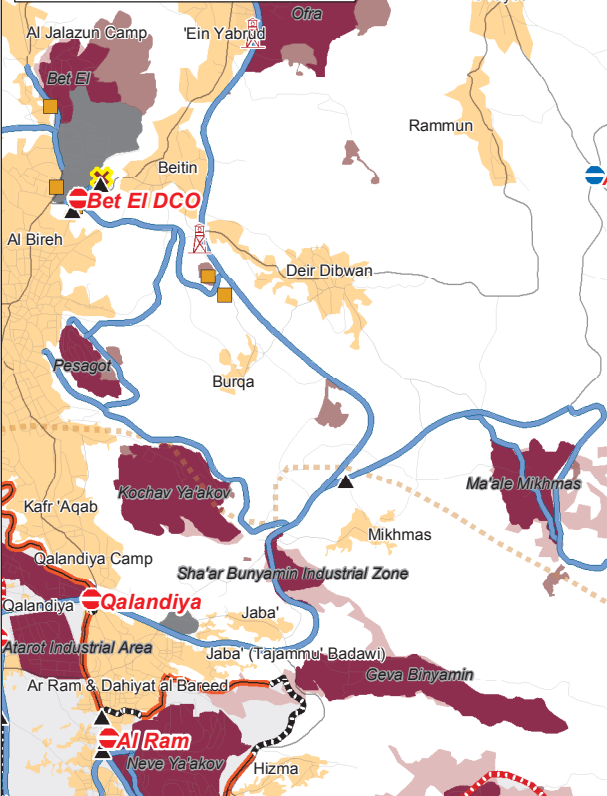
January 2006



JERICHO CLOSURES

January 2006

Checkpoints	4
Partial Checkpoints	0
Roadblocks	3
Road Gates	1
Earth Mounds	5
Earth Walls	0
Trenches	1
TOTAL	14



Closures

- Checkpoint
- Partial Checkpoint
- Observation Tower
- Road Gate
- Agricultural Gate
- Roadblock
- Earth Mound
- Earth Wall
- Trench
- Road Barrier

*Thirty-Eight Barrier gates are open to Palestinians with appropriate permits.

Barrier

- Completed
- Under construction
- Planned Barrier

Planned Barrier - path based on Israeli Government map, published 20 February 2005 and IDF land seizure orders. (Ministry of Defence - Seam Zone Authority)

Constructed Barrier - path extracted from satellite imagery and verified with field surveys as of January 2006.

Closed and Restricted Areas

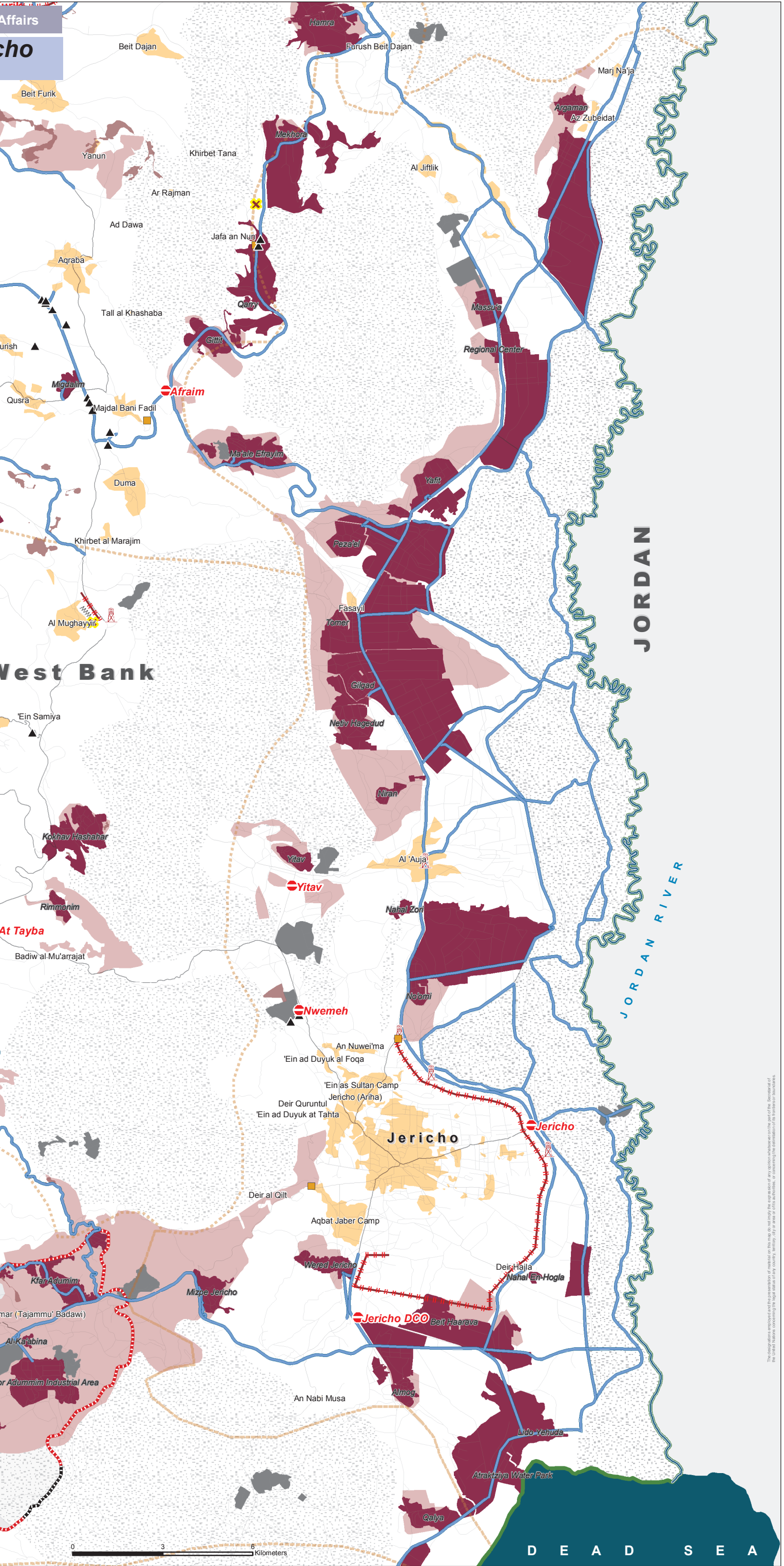
- Israeli military base
- Access is prohibited
- Israeli closed military area
- Access is prohibited
- Existing and projected 'closed areas' behind the Barrier
- Access is limited to permit holders

Israeli Settlements

- Settlement
- Evacuated Settlement
- Outpost
- Settlement Municipal Area

Palestinian Areas

- Builtup
- Governorate Boundary



The map is not intended to be used for the purpose of making any claim or to imply the approval of any particular political position or the sovereignty of any territory. It is not intended to be used for the purpose of making any claim or to imply the approval of any particular political position or the sovereignty of any territory.