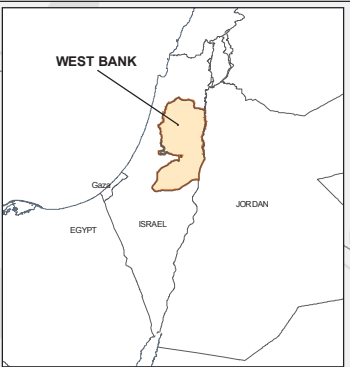
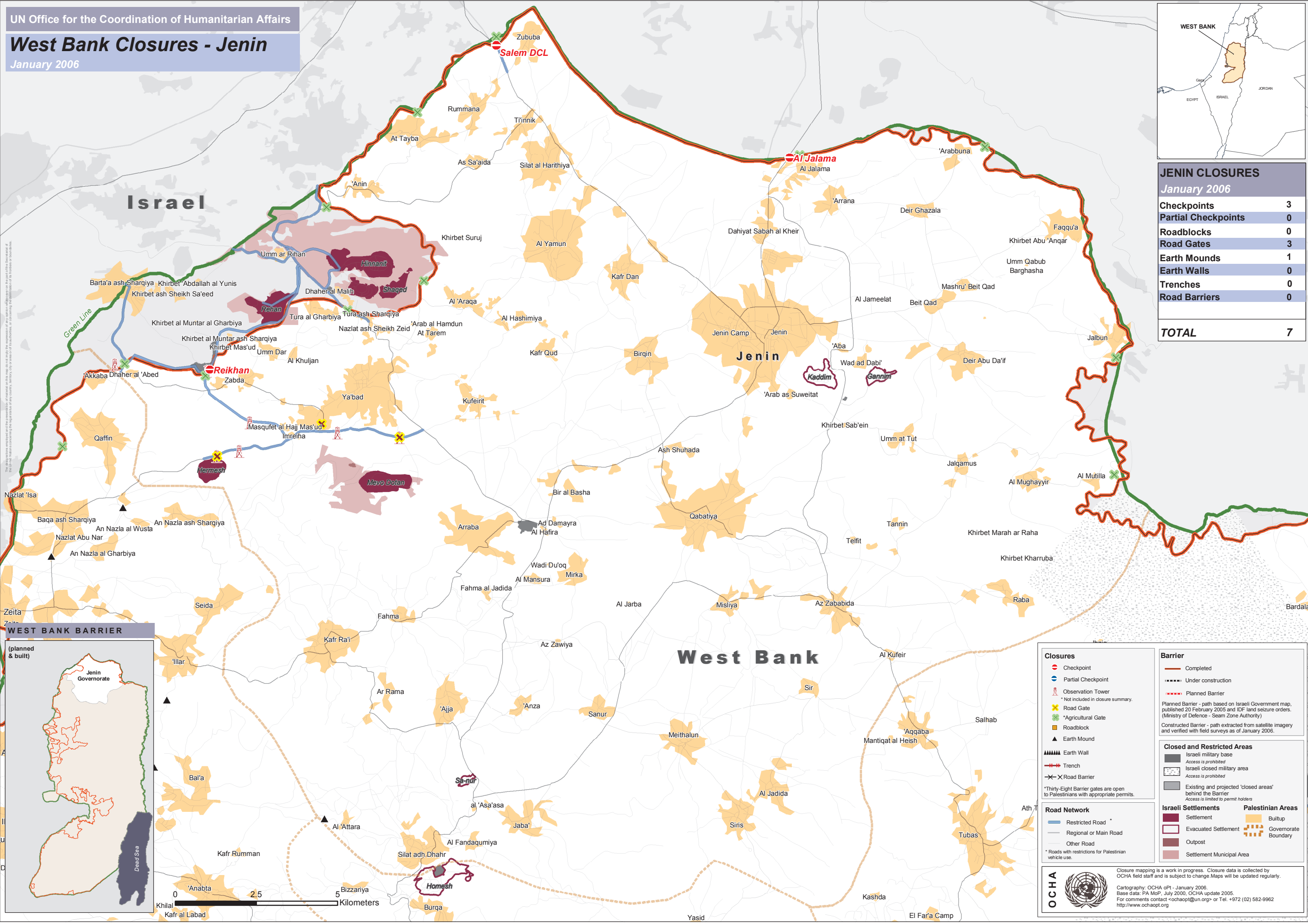
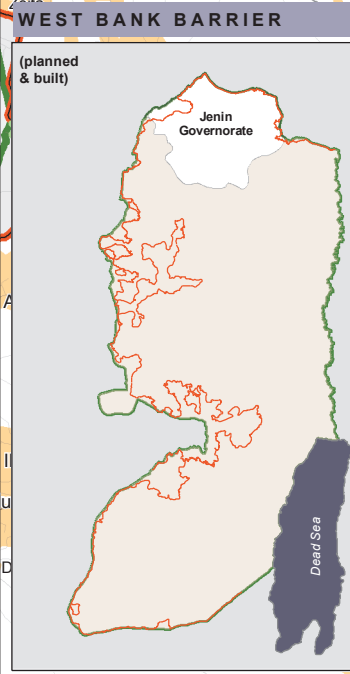


The designations employed and the presentation of material on this map do not imply the expression of any opinion whatsoever on the part of the Secretariat of the United Nations concerning the legal status of any country, territory, city or area or of its authorities, or concerning the delimitation of its frontiers or boundaries.



JENIN CLOSURES	
January 2006	
Checkpoints	3
Partial Checkpoints	0
Roadblocks	0
Road Gates	3
Earth Mounds	1
Earth Walls	0
Trenches	0
Road Barriers	0
TOTAL	
7	



Closures

- Checkpoint
- Partial Checkpoint
- Observation Tower
- Road Gate
- Agricultural Gate
- Roadblock
- Earth Mound
- Earth Wall
- Trench
- Road Barrier

* Thirty-Eight Barrier gates are open to Palestinians with appropriate permits.

Road Network

- Restricted Road
- Regional or Main Road
- Other Road

* Roads with restrictions for Palestinian vehicle use.

Barrier

- Completed
- Under construction
- Planned Barrier

Planned Barrier - path based on Israeli Government map, published 20 February 2005 and IDF land seizure orders. (Ministry of Defence - Seam Zone Authority)

Constructed Barrier - path extracted from satellite imagery and verified with field surveys as of January 2006.

Closed and Restricted Areas

- Israeli military base
- Access is prohibited
- Israeli closed military area
- Access is prohibited
- Existing and projected 'closed areas' behind the Barrier
- Access is limited to permit holders

Israeli Settlements

- Settlement
- Evacuated Settlement
- Outpost
- Settlement Municipal Area

Palestinian Areas

- Built-up
- Governorate Boundary