






Crossing Points

-  Open
-  Closed but Open for Exceptional Cases
-  Closed

Fences and Barriers

-  Concrete Wall
-  Fence with Watch Towers

Palestinian areas

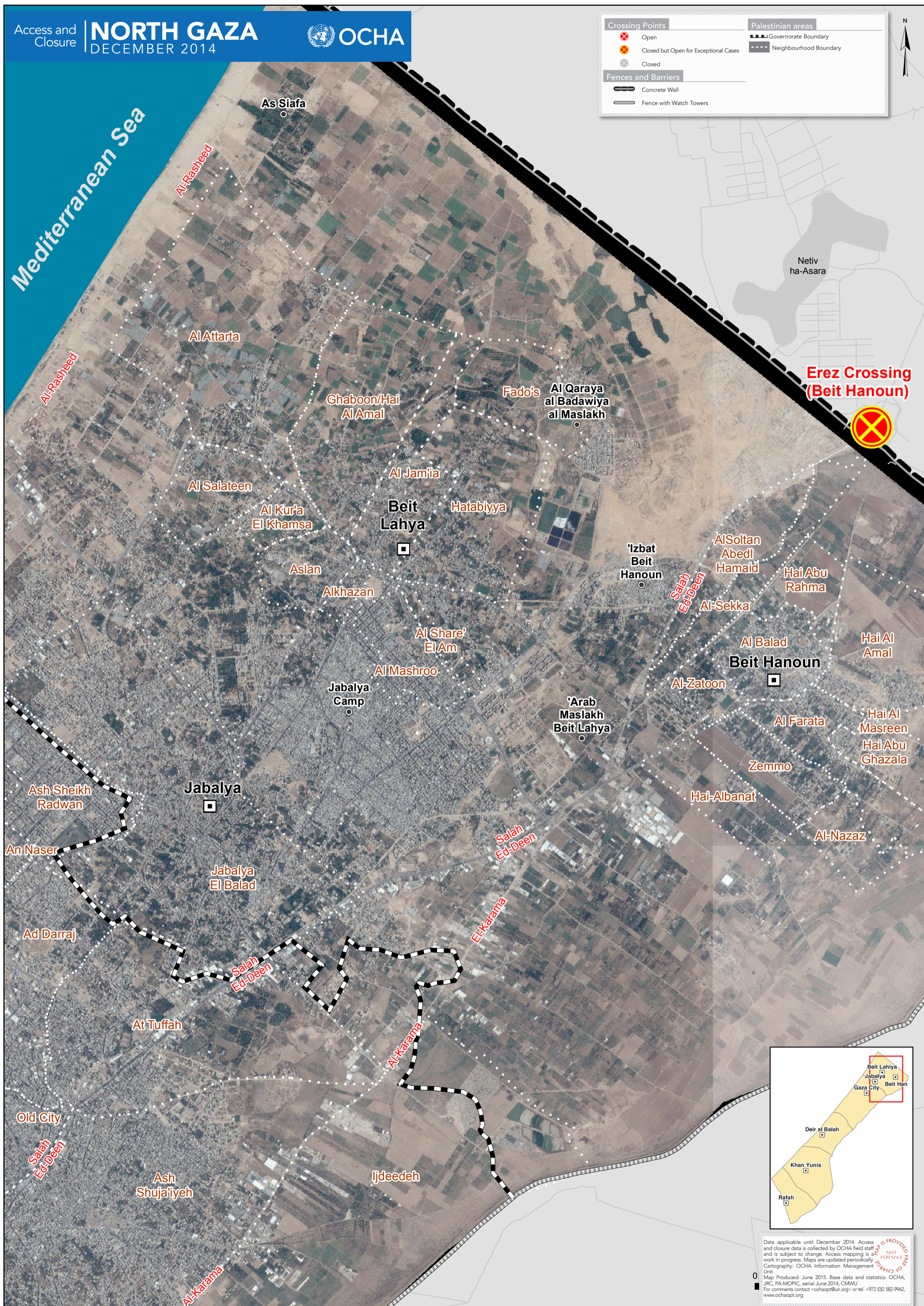
-  Governorate Boundary
-  Neighbourhood Boundary

N



Mediterranean Sea

**Erez Crossing
(Beit Hanoun)**



Data applicable until December 2014. Access and closure data is collected by OCHA field staff and is subject to change. Access mapping is a work in progress. Maps are updated periodically. Cartography: OCHA Information Management Unit.
Map Produced: June 2015. Base data and statistics: OCHA, JRC, PA-MOPIC, aerial June 2014, CMWU.
For comments contact <ochaapt@un.org> or tel. +972 (0) 582-9962, www.ochaapt.org