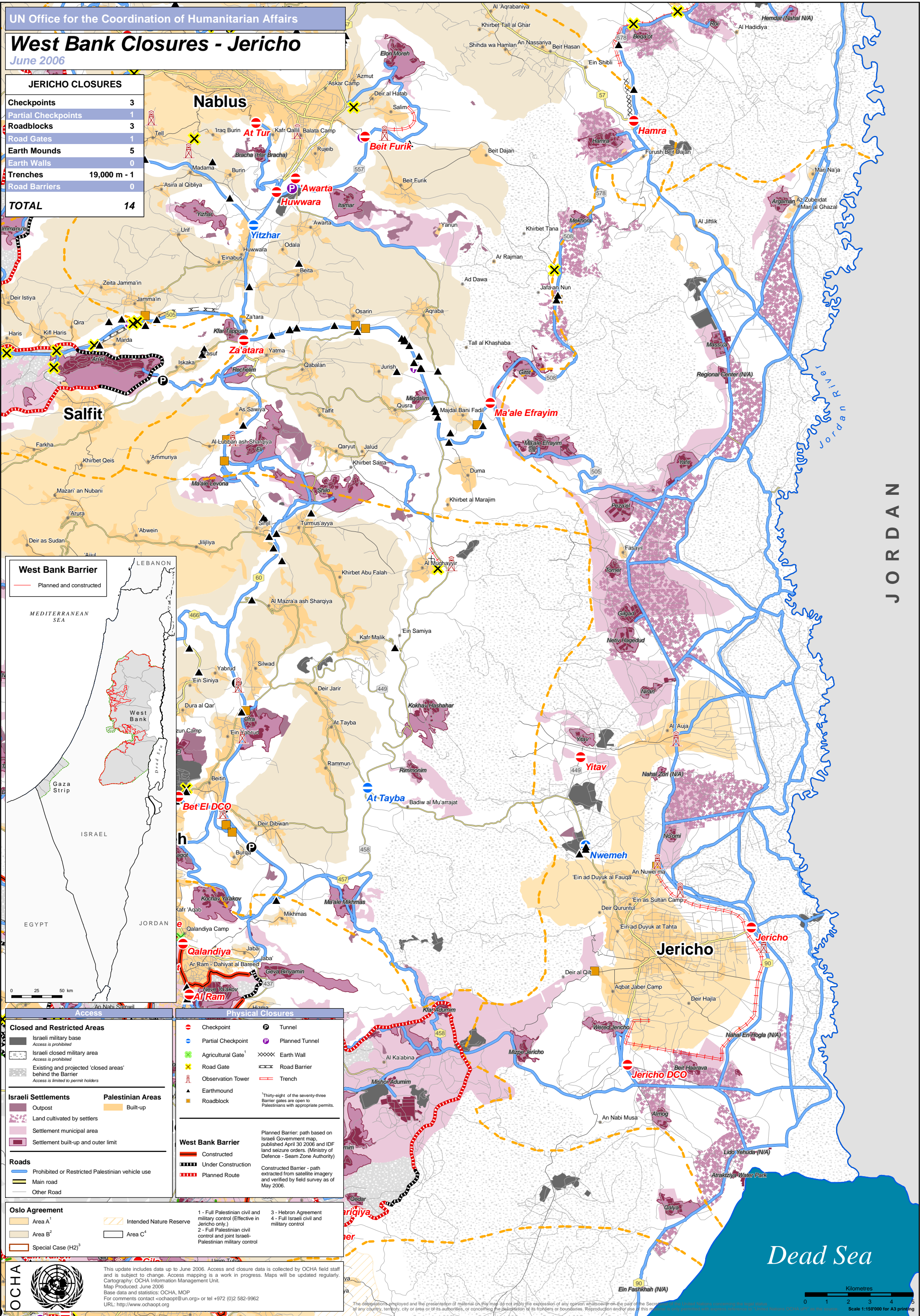


West Bank Closures - Jericho

June 2006

JERICHO CLOSURES

Checkpoints	3
Partial Checkpoints	1
Roadblocks	3
Road Gates	1
Earth Mounds	5
Earth Walls	0
Trenches	19,000 m - 1
Road Barriers	0
TOTAL	14



West Bank Barrier

Planned and constructed

MEDITERRANEAN SEA

LEBANON

West Bank

Gaza Strip

ISRAEL

EGYPT

JORDAN

Closed and Restricted Areas

- Israeli military base
Access is prohibited
- Israeli closed military area
Access is prohibited
- Existing and projected 'closed areas' behind the Barrier
Access is limited to permit holders

Israeli Settlements

- Outpost
- Land cultivated by settlers
- Settlement municipal area
- Settlement built-up and outer limit

Palestinian Areas

- Built-up

Roads

- Prohibited or Restricted Palestinian vehicle use
- Main road
- Other Road

Oslo Agreement

- Area A¹
- Area B²
- Special Case (H2)³
- Intended Nature Reserve
- Area C⁴

Physical Closures

- Checkpoint
- Partial Checkpoint
- Agricultural Gate¹
- Road Gate
- Observation Tower
- Earthmound
- Roadblock
- Tunnel
- Planned Tunnel
- Earth Wall
- Road Barrier
- Trench

West Bank Barrier

- Constructed
- Under Construction
- Planned Route

Planned Barrier: path based on Israeli Government map, published April 30 2006 and IDF land seizure orders. (Ministry of Defence - Seam Zone Authority)

Constructed Barrier - path extracted from satellite imagery and verified by field survey as of May 2006.

- 1 - Full Palestinian civil and military control (Effective in Jericho only.)
- 2 - Full Palestinian civil control and joint Israeli-Palestinian military control
- 3 - Hebron Agreement
- 4 - Full Israeli civil and military control



This update includes data up to June 2006. Access and closure data is collected by OCHA field staff and is subject to change. Access mapping is a work in progress. Maps will be updated regularly.
Cartography: OCHA Information Management Unit.
Map Produced: June 2006
Base data and statistics: OCHA, MOP
For comments contact <ochaopt@un.org> or tel +972 (0)2 582-9962
URL: <http://www.ochaopt.org>

The designations employed and the presentation of material on this map do not imply the expression of any opinion whatsoever on the part of the Secretariat of the United Nations concerning the legal status of any country, territory, city or area or of its authorities, or concerning the delimitation of its frontiers or boundaries. Reproduction and/or use of this map is only permitted with express permission of the United Nations Office for the Coordination of Humanitarian Affairs.

Kilometres
0 1 2 3 4 5
Scale 1:150'000 for A3 printing