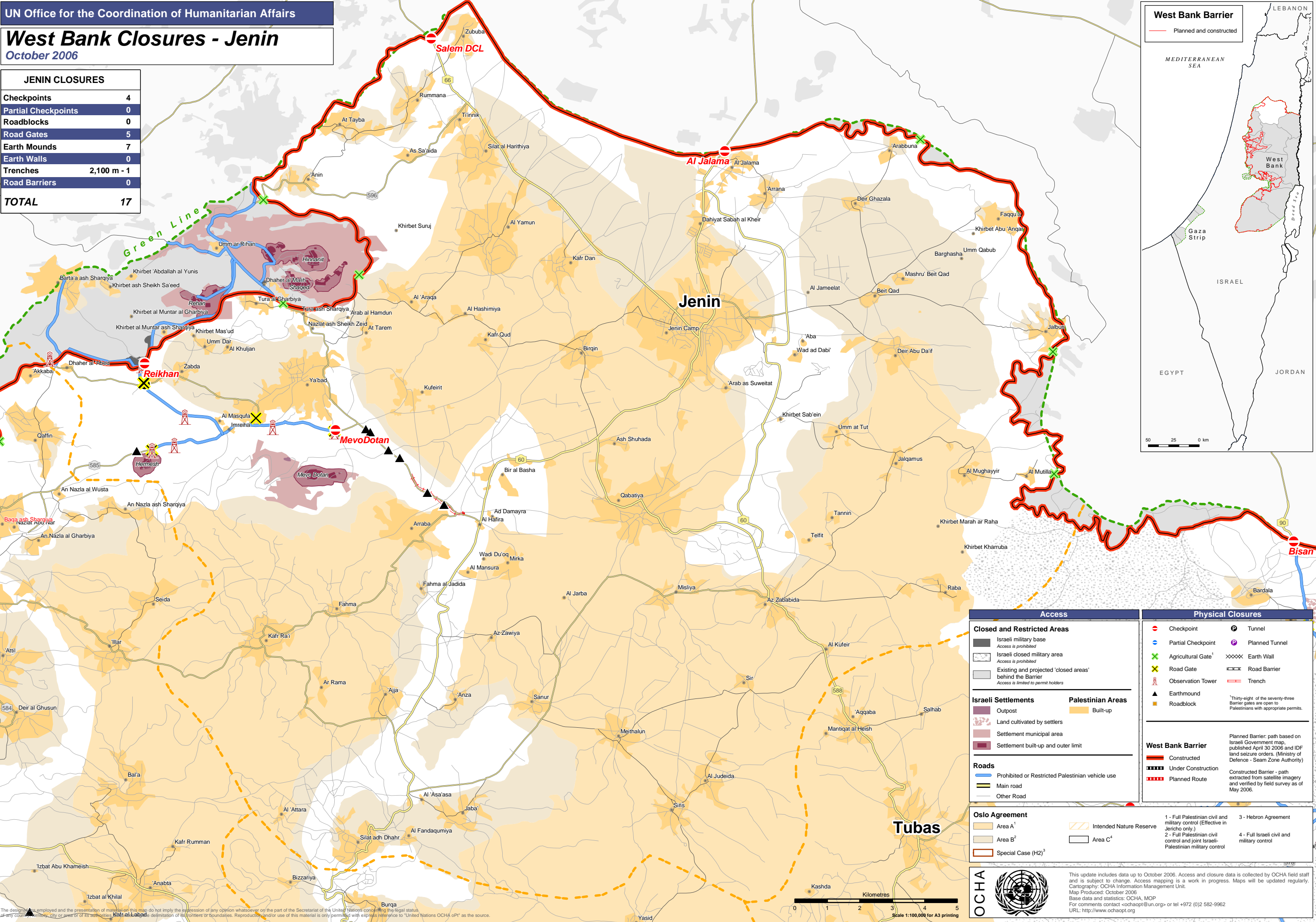
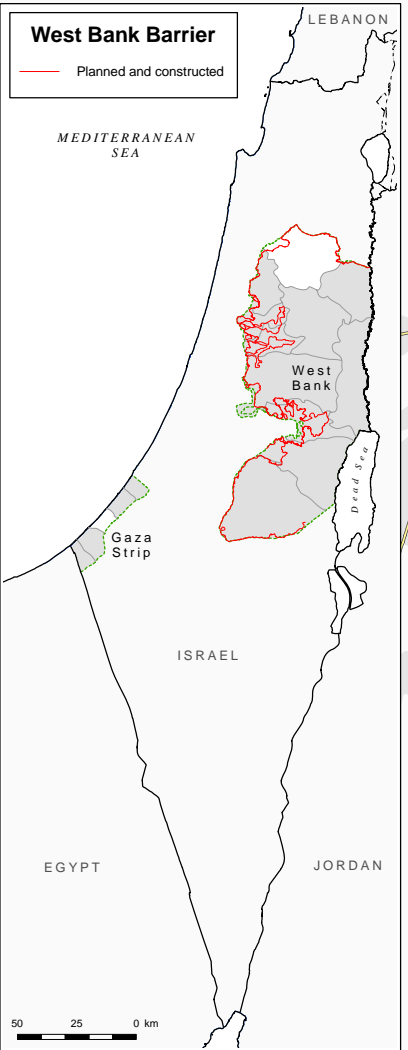


JENIN CLOSURES	
Checkpoints	4
Partial Checkpoints	0
Roadblocks	0
Road Gates	5
Earth Mounds	7
Earth Walls	0
Trenches	2,100 m - 1
Road Barriers	0
TOTAL	17



The design, names employed and the presentation of material on this map do not imply the expression of any opinion whatsoever on the part of the Secretariat of the United Nations concerning the legal status of any country, territory, city or area or of its authorities, or the delimitation of its frontiers or boundaries. Reproduction and/or use of this material is only permitted with express reference to "United Nations OCHA oPt" as the source.



Access

Closed and Restricted Areas

Israeli military base

Access is prohibited

Israeli closed military area

Access is prohibited

Existing and projected 'closed areas' behind the Barrier

Access is limited to permit holders

Israeli Settlements

Outpost

Land cultivated by settlers

Settlement municipal area

Settlement built-up and outer limit

Roads

Prohibited or Restricted Palestinian vehicle use

Main road

Other Road

Physical Closures

Checkpoint

Partial Checkpoint

Agricultural Gate¹

Road Gate

Observation Tower

Earthmound

Roadblock

Tunnel

Planned Tunnel

Earth Wall

Road Barrier

Trench

West Bank Barrier

Constructed

Under Construction

Planned Route

Planned Barrier: path based on Israeli Government map, published April 30 2006 and IDF land seizure orders. (Ministry of Defence - Seam Zone Authority)

Constructed Barrier - path extracted from satellite imagery and verified by field survey as of May 2006.

Oslo Agreement

Area A¹

Area B²

Special Case (H2)³

Intended Nature Reserve

Area C⁴

1 - Full Palestinian civil and military control (Effective in Jericho only.)

2 - Full Palestinian civil control and joint Israeli-Palestinian military control

3 - Hebron Agreement

4 - Full Israeli civil and military control

OCHA

This update includes data up to October 2006. Access and closure data is collected by OCHA field staff and is subject to change. Access mapping is a work in progress. Maps will be updated regularly.

Cartography: OCHA Information Management Unit.

Map Produced: October 2006

Base data and statistics: OCHA, MOP

For comments contact <ochaopt@un.org> or tel +972 (0)2 582-9962

URL: <http://www.ochaopt.org>