

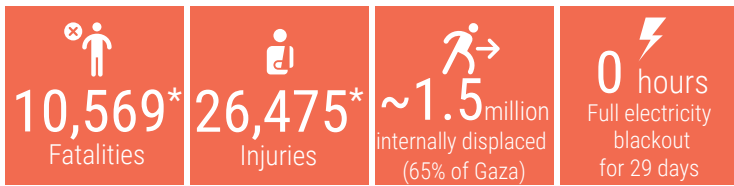
DAY 33

OVERVIEW

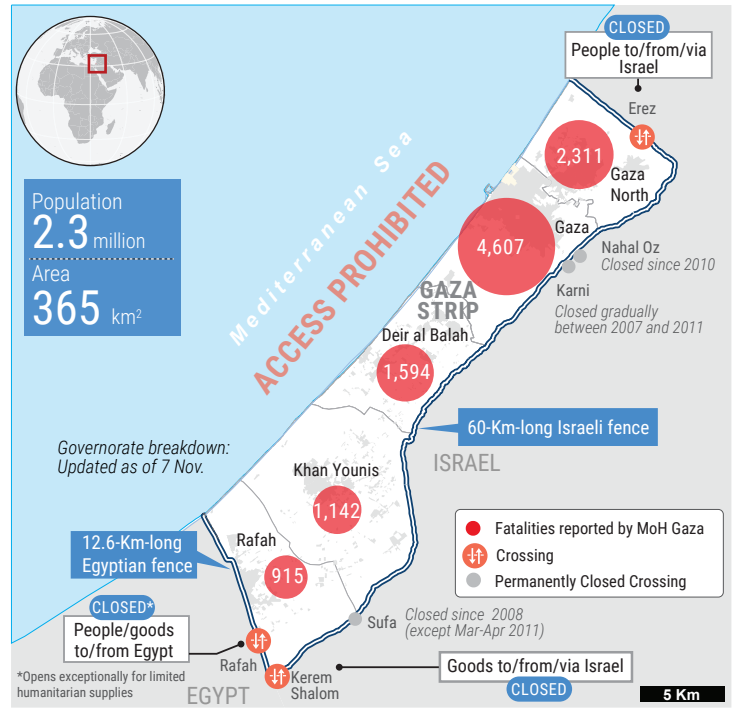
The snapshot provides a comprehensive overview of the ongoing humanitarian crisis in Gaza as of 8 November 2023, including casualties, particularly among women and children.

Significant damage has been inflicted upon critical infrastructure and essential services, affecting people's ability to maintain their dignity and basic living standards.

This snapshot highlights reported figures on the impact of hostilities on people in Gaza, where a major humanitarian crisis has unfolded.

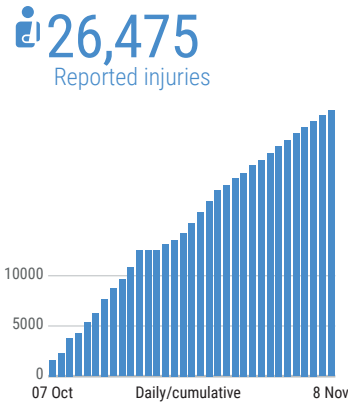
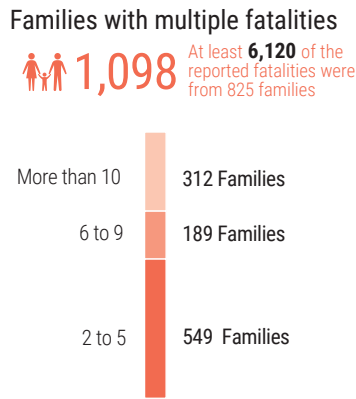


*Reported by MoH Gaza

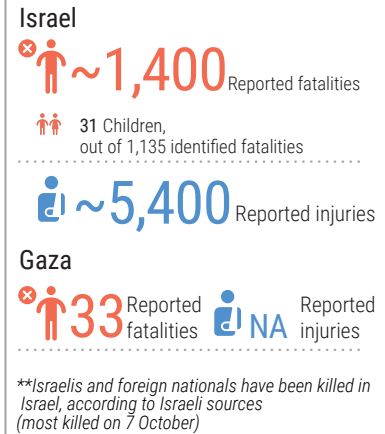


REPORTED CASUALTIES (Cumulative) as of 8 November 2023

Palestinians*



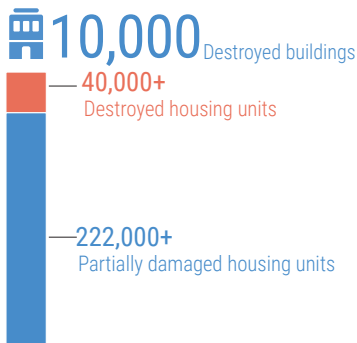
Israelis**



**Israelis and foreign nationals have been killed in Israel, according to Israeli sources (most killed on 7 October)

Other 2,550 people including 1,350 children reported missing and may be trapped under the rubble

DAMAGE*



BASIC SERVICES AND LIVELIHOODS

FOOD SECURITY
Market stocks of essential food*: Wheat flour (23 days), Vegetable oil (3 days), Pulse (3 days), Sugar (8 days), Rice: (1 day).
*Source: WFP

HEALTH
Shut down over 1/3 of the hospitals and nearly 2/3 of primary health care shut down
At high risk: At least 1,000 kidney failure, >2,000 cancer patients, 130 neonates in incubators
Critical shortages of drugs, blood products and supplies (Fuel at the hospitals is being severely rationed)

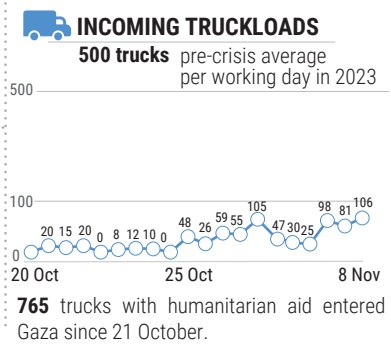
WATER AND SANITATION
92% less water consumption than pre-hostilities (average)
Most of 65 sewerage pumping are not operational
50% leakage in a main water pipeline between Rafah and Khan Younis
Two of the 3 water pipelines from Israel are functioning

HUMANITARIAN OPERATION
at least 193 medical staff (according to the MoH), of whom at least 16 were on duty when killed (WHO), 89 UNRWA staff, 18 Palestinian Civil Defense personnel and 47 Journalists. 50 UNRWA installations damaged

MOVEMENT AND ACCESS
Closure of crossings with Egypt and Israel, Prohibition of sea access and restrictions, near Israel's perimeter fence.

EVACUATION ORDERS
All 13 hospitals still operational in Gaza city and Northern Gaza have received evacuation orders

EDUCATION
625K students with no access to education
Over 51% of Gaza's education facilities have been hit



*Ministry of public works and housing as of 6 Nov.