

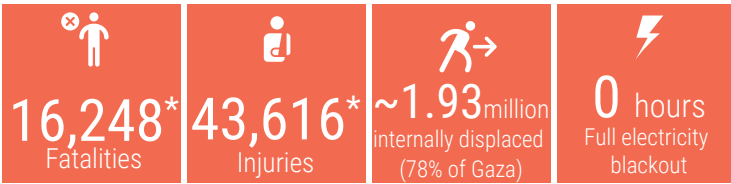
DAY 60

OVERVIEW

The snapshot provides a comprehensive overview of the ongoing humanitarian crisis in Gaza as of 5 December 2023, including casualties, particularly among women and children.

Significant damage has been inflicted upon critical infrastructure and essential services, affecting people's ability to maintain their dignity and basic living standards.

This snapshot highlights reported figures on the impact of hostilities on people in Gaza, where a major humanitarian crisis has unfolded.



*Sources: Government Media Office, MoH

REPORTED CASUALTIES (Cumulative) as of 5 December 2023

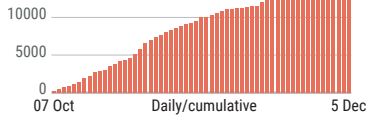
Palestinians*

Over 16,248 Reported fatalities in addition to ~1,000 fatalities in Israel, including people involved in the 7 October attack

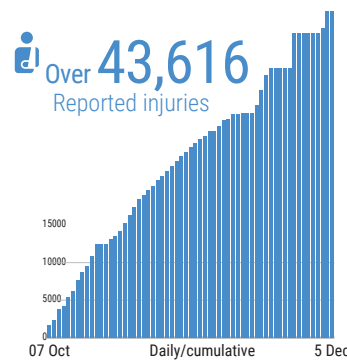
~4,885 Women
~7,112 Children
70% of Reported fatalities

Families with multiple fatalities

1,550



*Sources: Ministry of Health, Government Media Office



Israelis**

Israel

Over 1,200*** Reported fatalities

1,162 identified fatalities, including at least 33 children

~5,400 Reported injuries

Gaza

85 Reported fatalities NA Reported injuries

138 hostages remain in Gaza (including soldiers and foreign nationals)

** According to Israeli media citing official sources
***The reported estimate, which includes foreign nationals, has been changed by the Israeli sources

DAMAGE*



BASIC SERVICES AND LIVELIHOODS

FOOD SECURITY

- Lack of food in the north is of increasing concern
- The situation is catastrophic and WFP stocks inside Gaza are running out
- The last functioning mill in Gaza was destroyed on 15 November

4-6 hours average waiting time to receive half of normal bread portion

WATER AND SANITATION

- Two pipelines coming from Israel supply about 1,100 cubic metres per hour for the south and Middle area.
- No Access to clean water in the northern governorates. Fuel shortage impacts: 60 water wells, 2 desalination plants, sewage stations and pumps, wastewater treatment.

HEALTH

- Hospitals are being under heavy strikes.
- The number of functioning hospitals has dropped from 36 to 18

At high risk

At least 1,000 kidney failure, >2,000 cancer patients, 130 neonates in incubators

Critical shortages

of drugs, blood products and supplies (Fuel at the hospitals is being severely rationed)

EDUCATION

625K (100%) Students with no access to education

Over 51% of Gaza's education facilities have been hit

HUMANITARIAN OPERATION

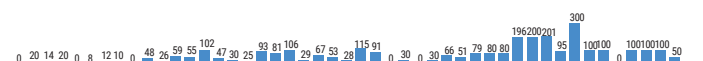
- 131 UN staff killed: UNRWA: 130; WHO: 1
- At least 286 health workers killed
- 32 Civil Defence killed while on duty
- 81 Journalists killed

MOVEMENT AND ACCESS

The two crossings with Israel remain closed since 7 October
Rafah crossing with Egypt is partially open. Prohibition of sea access and restrictions near Israel's perimeter fence.

INCOMING TRUCKLOADS

500 trucks including fuel pre-crisis average per working day in 2023



3,097 trucks excluding fuel with humanitarian aid entered Gaza since 21 October.

*Ministry of Public Works and Housing as of 3 Dec.



HEALTH

- Hospitals are being under heavy strikes.
- The number of functioning hospitals has dropped from 36 to 18

At high risk

At least **1,000** kidney failure, **>2,000** cancer patients, **130** neonates in incubators

Critical shortages

of drugs, blood products and supplies
(**Fuel at the hospitals is being severely rationed**)



EDUCATION

625K (100%) Students with no access to education

Over 51% of Gaza's education facilities have been hit



HUMANITARIAN OPERATION

- **131** UN staff killed:
UNRWA: **130**; WHO: **1**
- At least **286** health workers killed
- **32** Civil Defence killed while on duty

- **81** Journalists killed

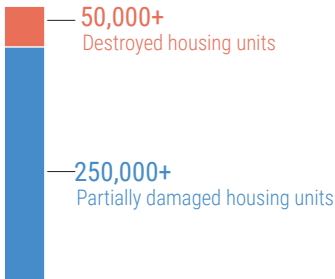


MOVEMENT AND ACCESS

The two crossings with Israel remain closed since 7 October

Rafah crossing with Egypt is partially open.

Prohibition of sea access and restrictions near Israel's perimeter fence.



- Over **60%** of Gaza's housing units reportedly destroyed or damaged
- **339** education facilities reportedly damaged
- **11** bakeries reportedly destroyed
- **26** hospitals and **56** health care centres out of service
- **56** ambulances damaged
- **20** WASH facilities damaged
- At least **3** churches and **88** mosques damaged

**Ministry of Public Works and Housing as of 3 Dec.*



FOOD SECURITY

- Lack of food in the north is of increasing concern
- The situation is catastrophic and WFP stocks inside Gaza are running out
- The last functioning mill in Gaza was destroyed on 15 November

4-6 hours average waiting time to receive half of normal bread portion




WATER AND SANITATION

- **Two** pipelines coming from Israel supply about 1,100 cubic metres per hour for the south and Middle area.
- **No Access** to clean water in the northern governorates. Fuel shortage impacts: 60 water wells, 2 desalination plants, sewage stations and pumps, wastewater treatment.

Israelis**

Israel

 Over **1,200***** Reported fatalities

 1,162 identified fatalities,
including at least 33 children

 **~5,400** Reported injuries

Gaza

 **85** Reported fatalities  **NA** Reported injuries

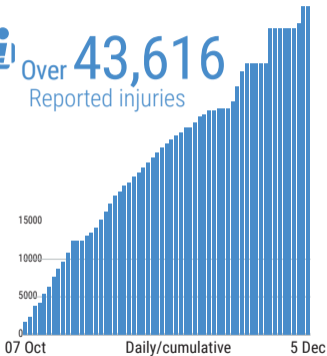
138 hostages remain in Gaza (including soldiers and foreign nationals)

** According to Israeli media citing official sources

***The reported estimate, which includes foreign nationals, has been changed by the Israeli sources



Over **43,616**
Reported injuries



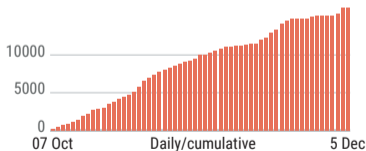
Palestinians*

 Over **16,248** in addition to ~1,000 fatalities in Israel, including people involved in the 7 October attack
Reported fatalities

 ~4,885 Women
 ~7,112 Children
] **70%** of Reported fatalities

Families with multiple fatalities

 **1,550**



*Sources: Ministry of Health, Government Media Office



16,248*
Fatalities



43,616*
Injuries



~1.93 million
internally displaced
(78% of Gaza)



0 hours
Full electricity
blackout

*Sources: Government Media Office, MoH



Population
2.3 million

Area
365 km²



Mediterranean Sea
ACCESS PROHIBITED

CLOSED

People to/from/via
Israel

Erez



Gaza
North

Gaza

Nahal Oz

Closed since 2010

Karni

*Closed gradually
between 2007 and 2011*

Wadi Gaza

Deir al Balah

60-Km-long Israeli fence

ISRAEL

Khan Younis

**12.6-Km-long
Egyptian fence**

Rafah

Partially Open*

People/goods
to/from Egypt

Rafah

Rafah

Kerem
Shalom

Sufa

*Closed since 2008
(except Mar-Apr 2011)*

Goods to/from/via Israel

CLOSED

5 Km

*Opens exceptionally for limited humanitarian supplies

EGYPT



Crossing

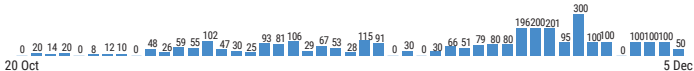
Permanently Closed Crossing





INCOMING TRUCKLOADS

500 trucks including fuel pre-crisis average per working day in 2023



3,097 trucks excluding fuel with humanitarian aid entered Gaza since 21 October.