

DAY 149

KEY FIGURES



30,534
Palestinian fatalities

Source: MoH Gaza



~1.7 million
Of internally displaced
(75% of Gaza)

Source: UNRWA



2.2 million

People facing Crisis or worse levels of food insecurity (IPC Phase 3 or above)

Source: IPC



0 hours
Full electricity blackout

Source: GEDCO

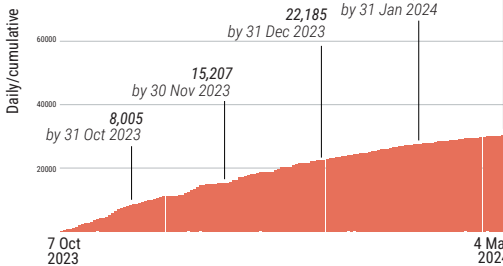


REPORTED CASUALTIES (Cumulative) as of 4 March 2024

Palestinians*

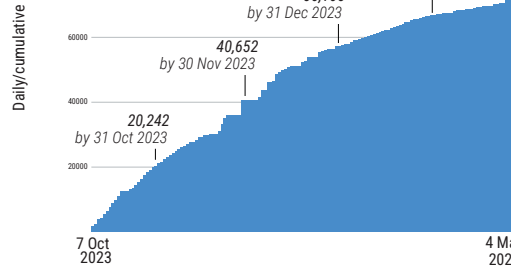
30,534
Reported fatalities

in addition to ~1,000 fatalities in Israel, including people involved in the 7 October attack (Source: Israeli military cited by the media)



*Source: MoH Gaza

71,920
Reported injuries



Israelis**

Israel

Over 1,200*** Reported fatalities

1,162 identified fatalities, including at least 33 children

~5,400 Reported injuries

Gaza****

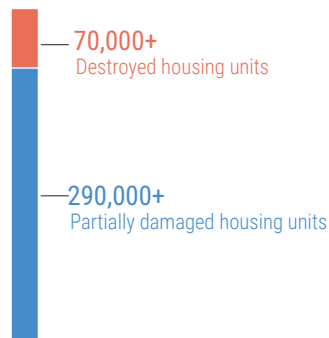
244 Reported fatalities
1,453 Reported injuries
134 hostages remain in Gaza

** According to Israeli media citing official sources

*** The reported estimate refers to fatalities on 7 October and the immediate aftermath and includes foreign nationals.

**** The reported Israeli casualties are soldiers killed or injured since the start of the ground operation.

REPORTED DAMAGE*



- Over 60% of housing units.
- At least 3 churches and 217 mosques.

*Source: GMO as of 4 Mar

BASIC SERVICES AND LIVELIHOODS

FOOD SECURITY*

- 2.2 million** people facing Crisis or worse levels of food insecurity (IPC Phase 3 or above).
- 1.17 million** people facing Emergency levels of food insecurity (IPC Phase 4).
- >0.5 million** people facing Catastrophe levels of food insecurity (IPC Phase 5).

*Source: IPC, 21 December

WATER AND SANITATION

- One out of three** water pipelines coming from Israel is operational, only at 47% of its full capacity.
- 83%** of groundwater wells are not operating.
- All** wastewater treatment systems are non-operational; one of them is partially working.
- No Access** to clean water in the northern governorates.
- Two out of three** main water desalination plants are partially functional.
- 132** groundwater wells destroyed/damaged.

HEALTH

- 12** hospitals partially functioning (6 in north and 6 in south of wadi Gaza).
- 2 out of 3** field hospitals are fully functional.
- 22.5%** of primary health care facilities are functional.
- >300,000** reported cases of acute respiratory infections.
- >200,000** reported cases of acute watery diarrhea.
- 126** ambulances damaged/destroyed. (Source: GMO)
- 17** Emergency Medical Teams (EMTs) are currently operational.

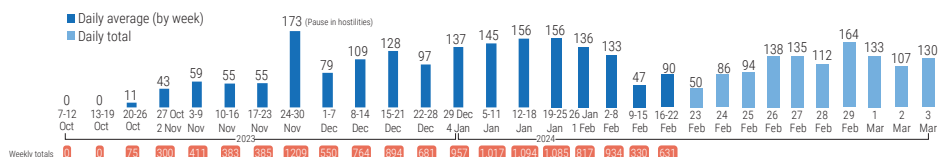
EDUCATION*

- 625,000** students with no access to education.
- >5,000** students and **>240** teachers have been killed.
- >60%** of schools sustained damage (~350 out of 563).

*Source: MoE, as of 13 Feb

INCOMING TRUCKLOADS

The pre-crisis average per working day in 2023 was **500 truckloads, including fuel.**



PROTECTION

- >1 million children** in need of mental health and psycho-social support.
- ~17,000** children are unaccompanied or separated from their parents.