

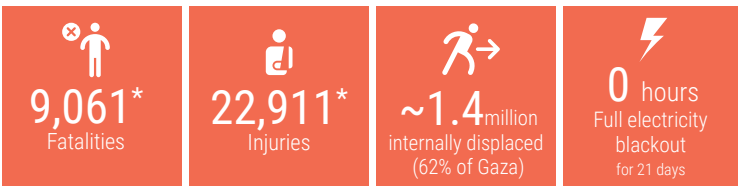
DAY 27

OVERVIEW

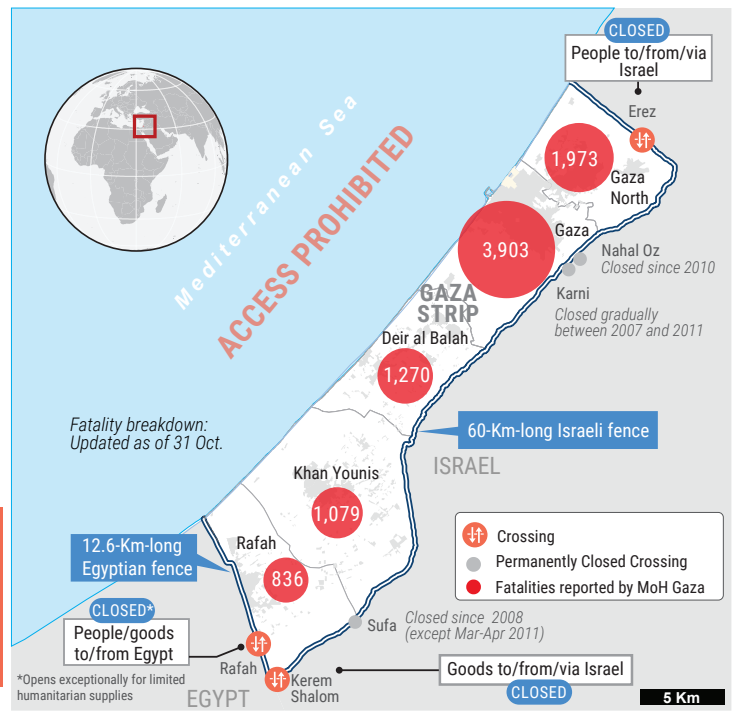
The snapshot provides a comprehensive overview of the ongoing humanitarian crisis in Gaza as of 2 November 2023, including casualties, particularly among women and children.

Significant damage has been inflicted upon critical infrastructure and essential services, affecting people's ability to maintain their dignity and basic living standards.

This snapshot highlights reported figures on the impact of hostilities on people in Gaza, where a major humanitarian crisis has unfolded.



*Reported by MoH Gaza

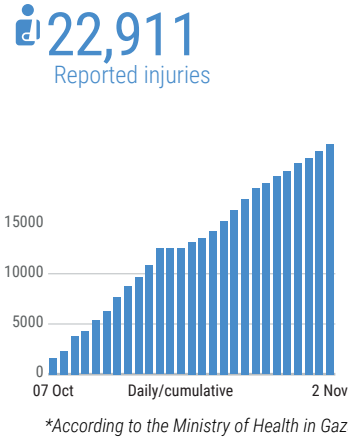
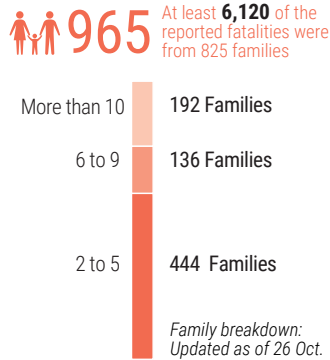


REPORTED CASUALTIES (Cumulative) as of 2 November 2023

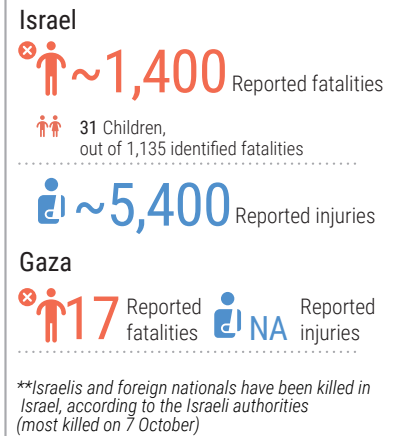
Palestinians*



Families with multiple fatalities



Israelis**



DAMAGE*



- At least **45%** of Gaza's housing units reportedly destroyed or damaged
- 246** education facilities reportedly damaged
- 11** bakeries reportedly destroyed
- 16** hospitals and **32** Health care center out of service
- 25** ambulances damaged
- 20** WASH facilities damaged
- At least **7** churches and **52** mosques damaged

*Ministry of public works and housing as of 23 Oct.

BASIC SERVICES AND LIVLIHOODS

FOOD SECURITY

Stocks sufficient for **7** days, but shops may run out in **5** days

The **only** operative mill cannot transform wheat due to electricity outages

4-6 hours average waiting time to receive half of normal bread portion

WATER AND SANITATION

92% less water consumption than pre-hostilities (average)

Most of **65** sewage pumping are not operational

50% leakage in a main water pipeline between Rafah and Khan Younis

None of the **3** water pipelines from Israel is functioning

HEALTH

Shut down over **1/3** of the hospitals and nearly **2/3** of primary health care shut down

At high risk At least **1,000** kidney failure, **9,000** cancer patients, **130** neonates in incubators

Critical shortages of drugs, blood products and supplies (**Fuel at the hospitals is being severely rationed**)

Evacuation orders

All **13** hospitals still operational in Gaza city and Northern Gaza have received evacuation orders

EDUCATION

625K students with no access to education

Over 40% of Gaza's education facilities have been hit

HUMANITARIAN OPERATION

At least **135** health workers, **67** UNRWA staff and **34** civil defence killed while on duty

101 attack on health care facilities, **44** UNRWA installations damaged

MOVEMENT AND ACCESS

Closure of crossings with Egypt and Israel, Prohibition of sea access and restrictions, near Israel's perimeter fence.

INCOMING TRUCKLOADS

500 trucks pre-crisis average per working day in 2023

