

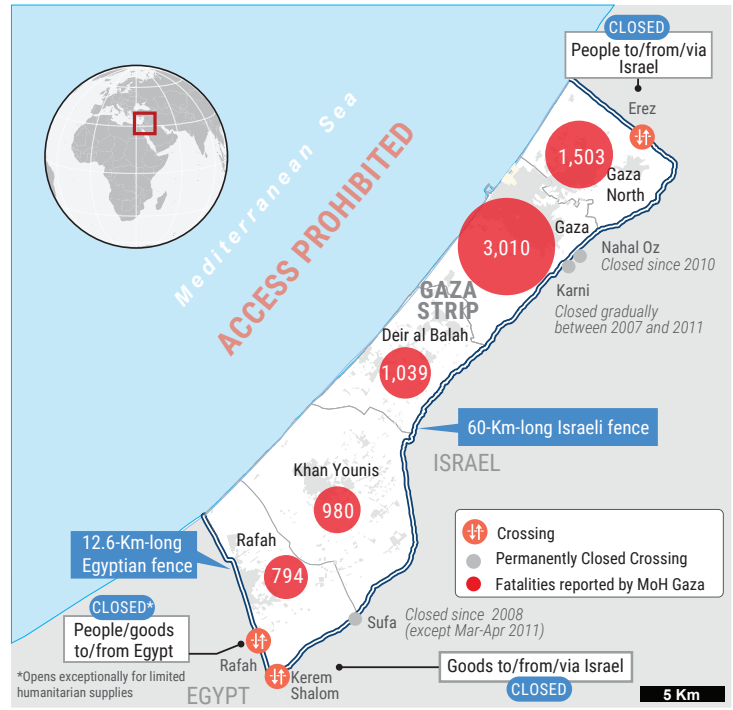
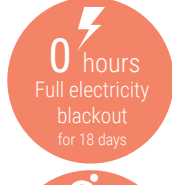
DAY 21

OVERVIEW

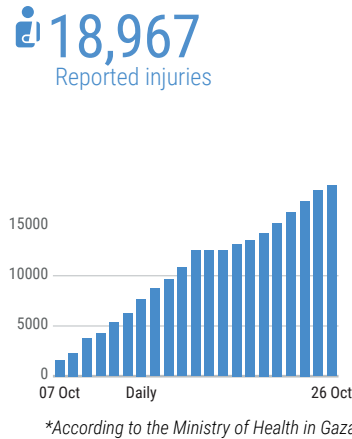
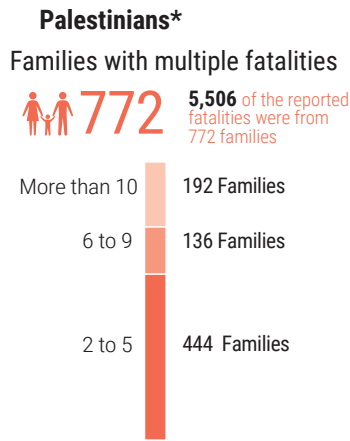
The snapshot provides a comprehensive overview of the ongoing humanitarian crisis in Gaza as of October 27, 2023, including casualties, particularly among women and children.

Significant damage has been inflicted upon critical infrastructure and essential services, affecting people's ability to maintain their dignity and basic living standards.

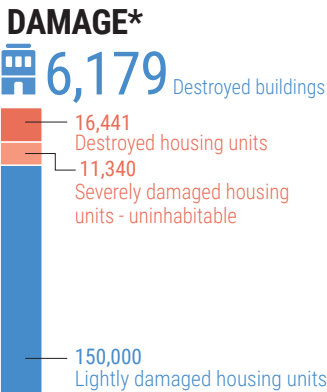
This snapshot highlights reported figures on the impact of hostilities on people in Gaza, where a major humanitarian crisis has unfolded.



REPORTED CASUALTIES (Cumulative) as of 26 October 2023



Other 1,700 people including 940 children reported missing and may be trapped under the rubble



BASIC SERVICES AND LIVLIHOODS

FOOD SECURITY

Stocks sufficient for **11** days, but shops may run out in **5** days

The **only** operative mill cannot transform wheat due to electricity outages

5-6 hours average waiting time to receive half of normal bread portion

WATER AND SANITATION

92% less water consumption than pre-hostilities (average)

Most of **65** sewage pumping are not operational

70% leakage in a main water pipeline between Rafah and Khan Younis

1 out of **3** water pipelines from Israel is functioning in Khan Younis (600 cubic metres per hour)

HEALTH

Shut down over **1/3** of the hospitals and nearly **2/3** of primary health care shut down

At high risk At least **1,000** kidney failure, **9,000** cancer patients, **130** neonates in incubators

Critical shortages of drugs, blood products and supplies (**Fuel at the hospitals is being severely rationed**)

EDUCATION

625K students with no access to education

Over 40% of Gaza's education facilities have been hit

TELECOMMUNICATION

100% blackout

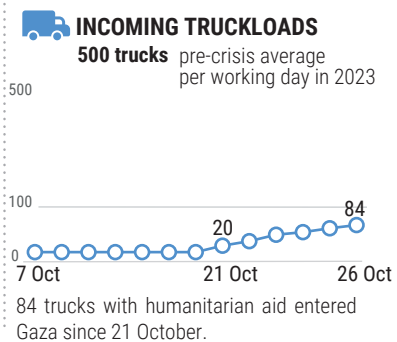
HUMANITARIAN OPERATION

At least **16** health workers, **38** UNRWA staff and **34** civil defence killed while on duty

76 attack on health care facilities, **53** UNRWA installations damaged

MOVEMENT AND ACCESS

Closure of crossings with Egypt and Israel, Prohibition of sea access and restrictions, near Israel's perimeter fence.



- At least **45%** of Gaza's housing units reportedly destroyed or damaged
- 221** education facilities reportedly damaged
- 11** bakeries reportedly destroyed
- 20** hospitals and **24** ambulances damaged
- 20** WASH facilities damaged
- At least **7** churches and **11** mosques damaged

*Ministry of public works and housing as of 23 Oct.