

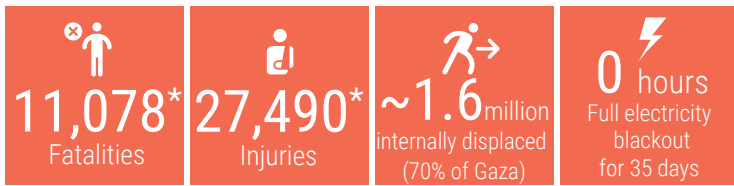
DAY 40

OVERVIEW

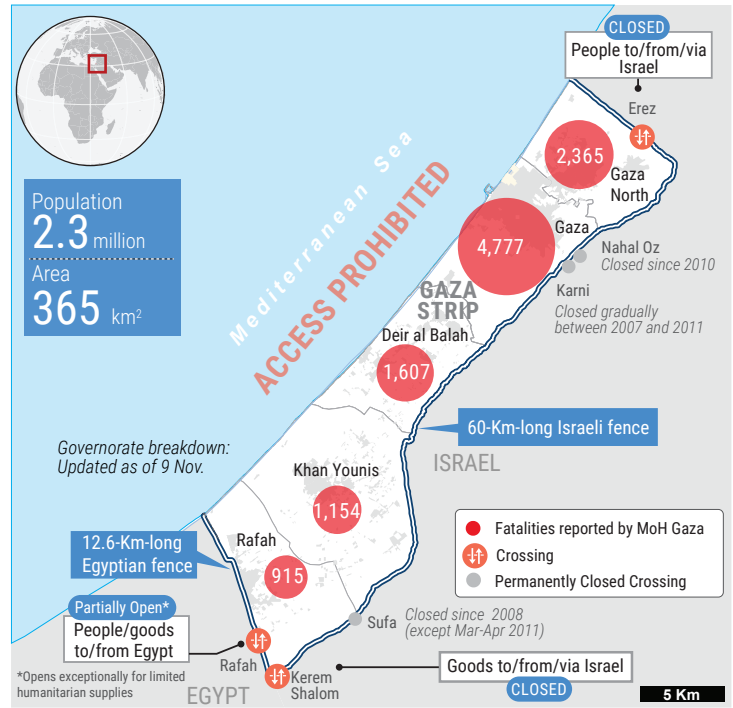
The snapshot provides a comprehensive overview of the ongoing humanitarian crisis in Gaza as of 15 November 2023, including casualties, particularly among women and children.

Significant damage has been inflicted upon critical infrastructure and essential services, affecting people's ability to maintain their dignity and basic living standards.

This snapshot highlights reported figures on the impact of hostilities on people in Gaza, where a major humanitarian crisis has unfolded.

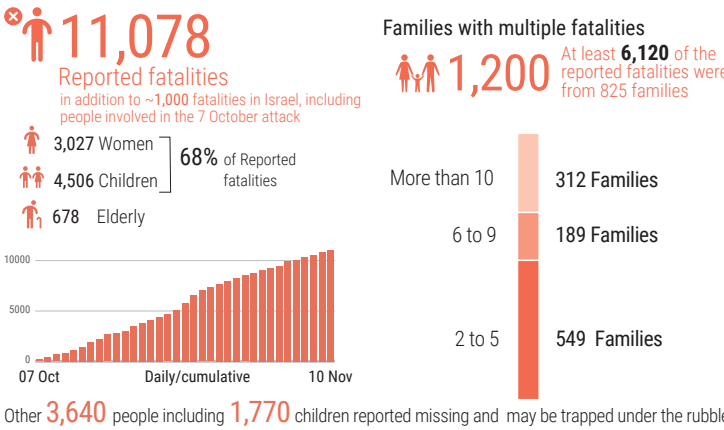


*Reported by MoH Gaza

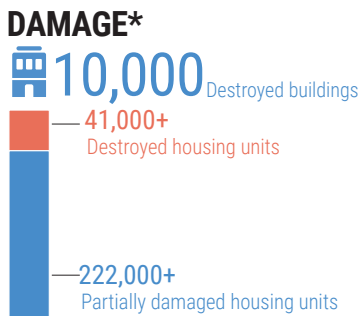
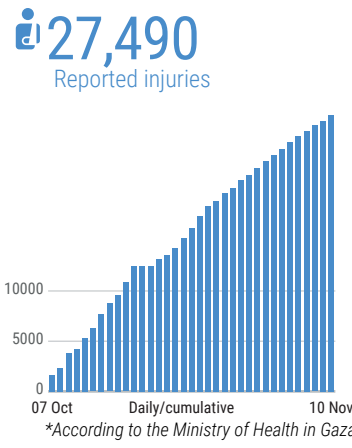


REPORTED CASUALTIES (Cumulative) as of 10 November 2023

Palestinians* following the collapse of services and communications at hospitals in the north, the MoH in Gaza did not update casualty figures.



Other 3,640 people including 1,770 children reported missing and may be trapped under the rubble



- At least 45% of Gaza's housing units reportedly destroyed or damaged
- 300 education facilities reportedly damaged
- 135 health facilities attacked
- 11 bakeries reportedly destroyed
- 25 hospitals and 52 Health care center out of service
- 55 ambulances damaged
- 20 WASH facilities damaged
- At least 3 churches and 74 mosques damaged

*Ministry of public works and housing as of 6 Nov.

BASIC SERVICES AND LIVELIHOODS

- FOOD SECURITY**
 - Lack of food in the north is of increasing concern
 - The situation is catastrophic and WFP stocks inside Gaza are running out
 - The last functioning mill in Gaza was destroyed on 15 November
- HEALTH**
 - Hospitals in the North being under heavy strikes.
 - Almost all hospitals in Gaza city and North Gaza governorates are reportedly not operational, except one.
- At high risk**
 - At least 1,000 kidney failure, >2,000 cancer patients, 130 neonates in incubators
- Critical shortages**
 - of drugs, blood products and supplies (Fuel at the hospitals is being severely rationed)
- Evacuation orders**
 - All 13 hospitals still operational in Gaza city and Northern Gaza have received evacuation orders
- EDUCATION**
 - 625K (100%) Students with no access to education
 - Over 51% of Gaza's education facilities have been hit
- WATER AND SANITATION**
 - Two pipelines coming from Israel supply about 1,100 cubic meters per hour for the south and Middle area.
 - No Access to Clean water in the Northern Governorates, Fuel shortage impacts: 60 water wells, 2 desalination plants, Sewage stations and pumps, Wastewater treatment.
 - UNRWA waste removal shutting down; 400 tons daily rubbish accumulation risk.

4-6 hours average waiting time to receive half of normal bread portion

- HUMANITARIAN OPERATION**
 - UNRWA to cease operations in 48 hours due to depleted fuel.
 - 103 UNRWA staff killed
 - At least 198 health workers killed
 - 22 civil defence killed while on duty
 - 51 Journalists killed
- MOVEMENT AND ACCESS**
 - The two crossings with Israel remain closed since 7 October
 - Rafah crossing with Egypt is partially open.
 - Prohibition of sea access and restrictions near Israel's perimeter fence.
- INCOMING TRUCKLOADS**
 - 500 trucks pre-crisis average per working day in 2023
 - 1,139 trucks with humanitarian aid entered Gaza since 21 October.

