

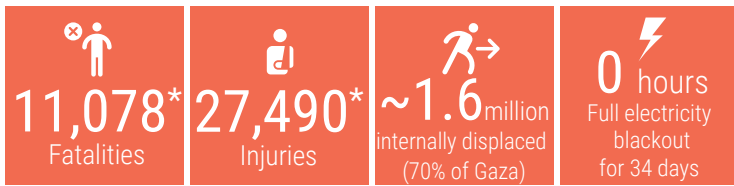
DAY 39

OVERVIEW

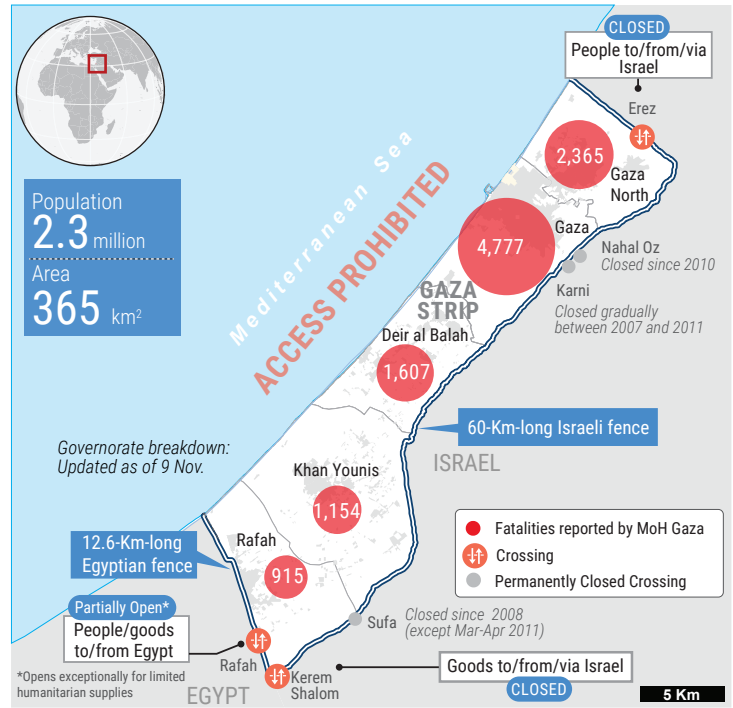
The snapshot provides a comprehensive overview of the ongoing humanitarian crisis in Gaza as of 14 November 2023, including casualties, particularly among women and children.

Significant damage has been inflicted upon critical infrastructure and essential services, affecting people's ability to maintain their dignity and basic living standards.

This snapshot highlights reported figures on the impact of hostilities on people in Gaza, where a major humanitarian crisis has unfolded.

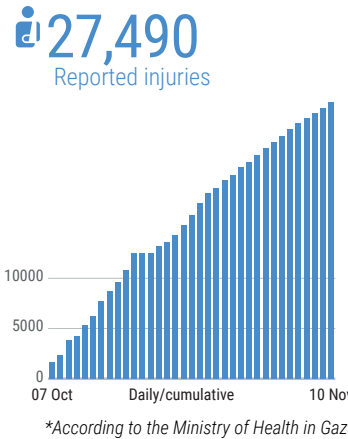
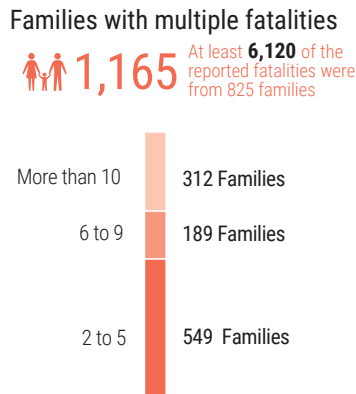


*Reported by MoH Gaza

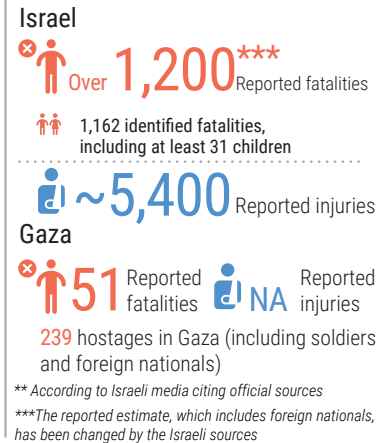


REPORTED CASUALTIES (Cumulative) as of 10 November 2023

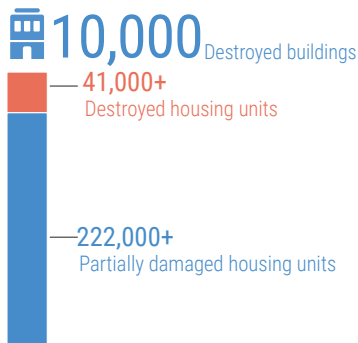
Palestinians* MoH in Gaza hasn't updated hospital casualties for 4 consecutive days



Israelis**



DAMAGE*



- At least 45% of Gaza's housing units reportedly destroyed or damaged
- 285 education facilities reportedly damaged
- 135 health facilities attacked
- 11 bakeries reportedly destroyed
- 22 hospitals and 49 Health care center out of service
- 55 ambulances damaged
- 20 WASH facilities damaged
- At least 3 churches and 72 mosques damaged

*Ministry of public works and housing as of 6 Nov.

BASIC SERVICES AND LIVELIHOODS

FOOD SECURITY

- Lack of food in the north is of increasing concern
- The situation is catastrophic and WFP stocks inside Gaza are running out

The **only** operative mill cannot transform wheat due to electricity outages
4-6 hours average waiting time to receive half of normal bread portion

WATER AND SANITATION

- Two** water contractors in the south stopped, leaving 200,000 without clean water.
- No Access** to Clean water in the Northern Governorates, Fuel shortage impacts: 60 water wells, 2 desalination plants, Sewage stations and pumps, Wastewater treatment
- UNRWA waste removal shutting down; **400 tons** daily rubbish accumulation risk.

HEALTH

- Hospitals in the North being under heavy strikes.
- Almost all hospitals in Gaza city and northern Gaza are reportedly not operational, except one.

At high risk

At least **1,000** kidney failure, **>2,000** cancer patients, **130** neonates in incubators
Critical shortages of drugs, blood products and supplies (**Fuel at the hospitals is being severely rationed**)

Evacuation orders

All **13** hospitals still operational in Gaza city and Northern Gaza have received evacuation orders

EDUCATION

625K (100%) Students with no access to education

Over 51% of Gaza's education facilities have been hit

HUMANITARIAN OPERATION

- UNRWA to cease operations in 48 hours due to depleted fuel.
- 102** UNRWA staff killed
- At least **192** health workers killed
- 22** civil defence killed while on duty
- 47** Journalists killed

MOVEMENT AND ACCESS

Closure of crossings with Israel. Rafah crossing with Egypt is partially open. Prohibition of sea access and restrictions near Israel's perimeter fence.

INCOMING TRUCKLOADS

500 trucks pre-crisis average per working day in 2023

