

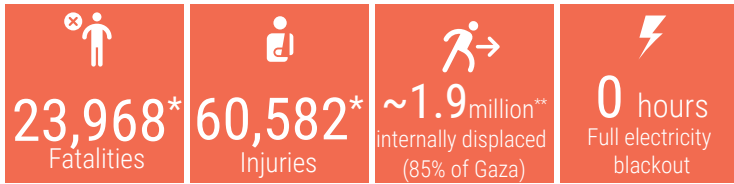
## DAY 99

### OVERVIEW

The snapshot provides a comprehensive overview of the ongoing humanitarian crisis in Gaza as of 14 January 2024, including casualties, particularly among women and children.

Significant damage has been inflicted upon critical infrastructure and essential services, affecting people's ability to maintain their dignity and basic living standards.

This snapshot highlights reported figures on the impact of hostilities on people in Gaza, where a major humanitarian crisis has unfolded.



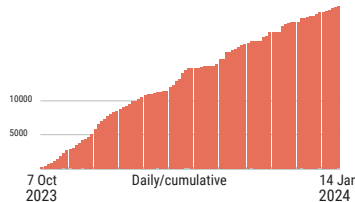
\*Source: MoH Gaza

\*\*Source: UNRWA

### REPORTED CASUALTIES (Cumulative) as of 14 January 2024

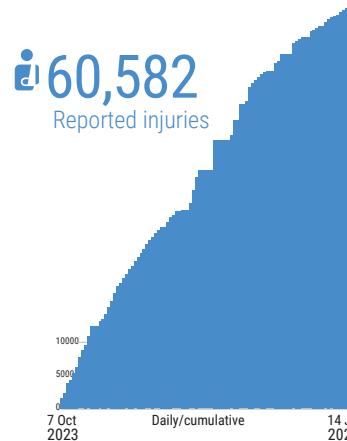
#### Palestinians\*

**23,968** in addition to ~1,000 fatalities in Israel, including people involved in the 7 October attack  
Reported fatalities



\*Source: MoH Gaza

**60,582**  
Reported injuries



#### Israelis\*\*

Israel  
**Over 1,200\*\*\*** Reported fatalities

1,162 identified fatalities, including at least 33 children

Gaza  
**~5,400** Reported injuries

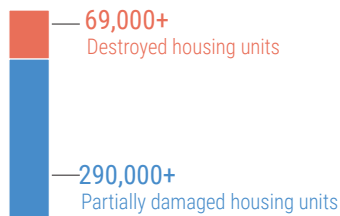
**186** Reported fatalities **1,113** Reported injuries

136 hostages remain in Gaza (including soldiers and foreign nationals)

\*\* According to Israeli media citing official sources

\*\*\* The reported estimate includes foreign nationals

### DAMAGE\*



- Over **60%** of Gaza's housing units reportedly destroyed or damaged
- 374** education facilities reportedly damaged
- 11** bakeries reportedly destroyed
- 121** ambulances damaged
- 20** WASH facilities damaged
- At least **3** churches and **150** mosques damaged

### BASIC SERVICES AND LIVELIHOODS

#### FOOD SECURITY\*

- 2.2 million** people at imminent risk of famine
- 378,000** people at Phase 5 (catastrophic levels) Phase 5 refers to extreme lack of food, starvation, and exhaustion of coping capacities.
- 939,000** people at Phase 4 (emergency levels)

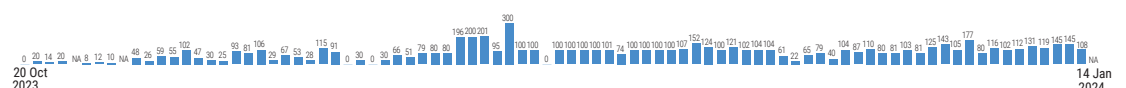
\*Source: IPC, 21 December

#### WATER AND SANITATION

- Two** out of the three water pipelines coming from Israel became operational as of 3 January.
- No Access** to clean water in the northern governorates. Fuel shortage impacts: 60 water wells, 2 desalination plants, sewage stations and pumps, wastewater treatment.

#### INCOMING TRUCKLOADS

The pre-crisis average per working day in 2023 was **500 trucks, including fuel.**



#### HEALTH

- Hospitals are under heavy strikes.
- 15** of Gaza's **36** hospitals are partially functional: 9 in the south and 6 in the north.

#### At high risk

At least **1,000** kidney failure, **>2,000** cancer patients, **130** neonates in incubators.

#### Critical shortages

of drugs, blood products and supplies (**Fuel at the hospitals is being severely rationed**).

#### EDUCATION

**625K (100%)** Students with no access to education.

**Over 69%** of all school buildings have sustained damage.

#### HUMANITARIAN OPERATION

- 148** UN staff killed: UNRWA: **146**; WHO: **1**; UNDP: **1**
- At least **337** health workers killed
- 45** Civil Defence killed while on duty
- 117** Journalists killed

#### MOVEMENT AND ACCESS

- Due to security incidents since its opening on 17 December, aid through Kerem Shalom was suspended between 25 and 28 December, but resumed on 29 December. All other Israeli-controlled crossings are closed.
- The Rafah crossing with Egypt is open for approved goods, and for the movement of some wounded and sick people, and aid workers.
- Access to the sea and to areas near Israel's perimeter fence is restricted.

\*GMO as of 14 Jan