

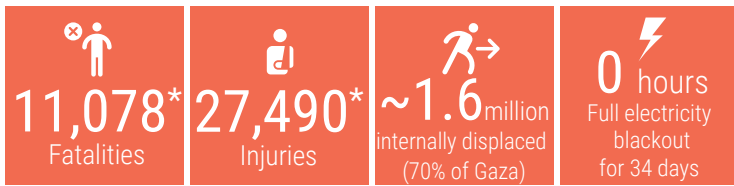
DAY 37

OVERVIEW

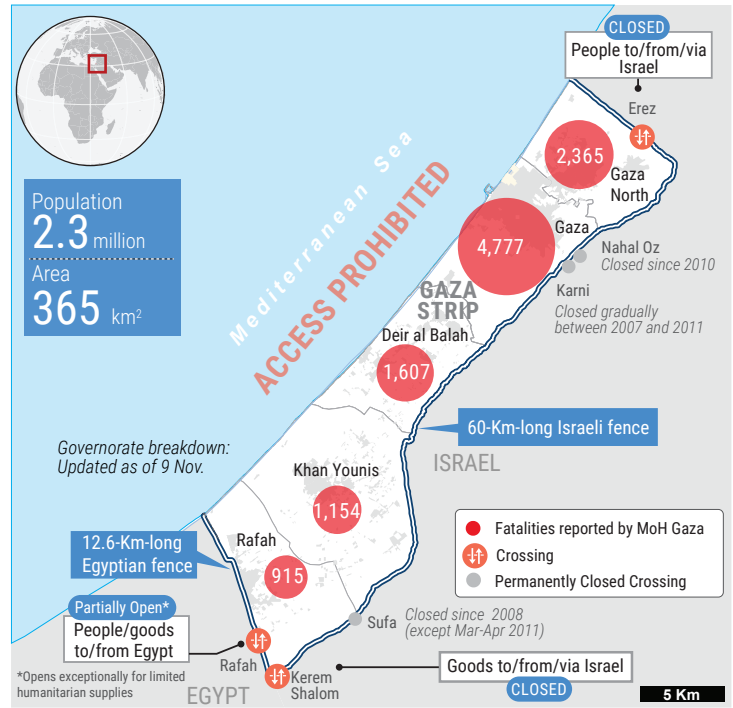
The snapshot provides a comprehensive overview of the ongoing humanitarian crisis in Gaza as of 12 November 2023, including casualties, particularly among women and children.

Significant damage has been inflicted upon critical infrastructure and essential services, affecting people's ability to maintain their dignity and basic living standards.

This snapshot highlights reported figures on the impact of hostilities on people in Gaza, where a major humanitarian crisis has unfolded.

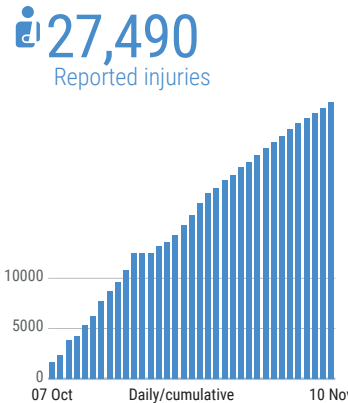
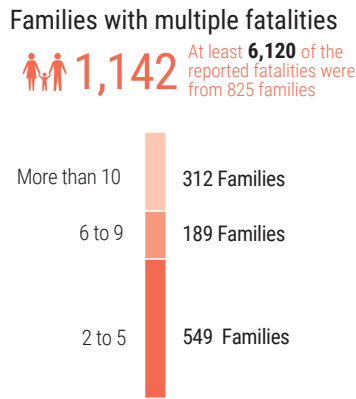


*Reported by MoH Gaza

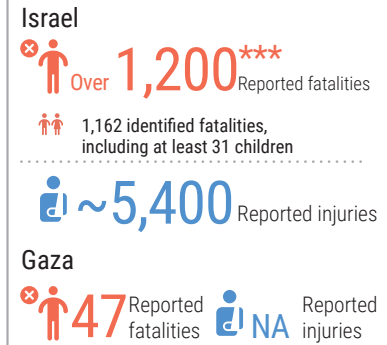


REPORTED CASUALTIES (Cumulative) as of 10 November 2023

Palestinians*

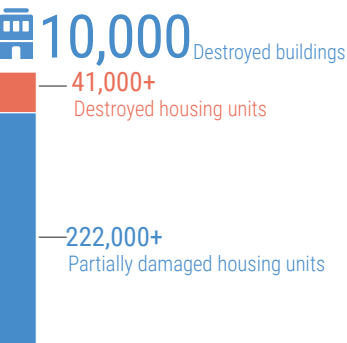


Israelis**



** According to Israeli media citing official sources
***The reported estimate, which includes foreign nationals, has been changed by the Israeli sources

DAMAGE*



- At least 45% of Gaza's housing units reportedly destroyed or damaged
- 285 education facilities reportedly damaged
- 135 health facilities attacked
- 11 bakeries reportedly destroyed
- 22 hospitals and 49 Health care center out of service
- 53 ambulances damaged
- 20 WASH facilities damaged
- At least 3 churches and 70 mosques damaged

*Ministry of public works and housing as of 6 Nov.

BASIC SERVICES AND LIVELIHOODS

FOOD SECURITY
Market stocks of essential food*: Wheat flour (12 days), Vegetable oil (0 days), Pulse (0 days), Sugar (0 days), Rice: (0 day).
*Source: WFP

HEALTH
Shut down over 1/2 of the hospitals and nearly 2/3 of primary health care shut down
At high risk: At least 1,000 kidney failure, >2,000 cancer patients, 130 neonates in incubators
Critical shortages of drugs, blood products and supplies (Fuel at the hospitals is being severely rationed)

WATER AND SANITATION
90% less water consumption than pre-hostilities (average)
Most of 65 sewerage pumping are not operational
50% leakage in a main water pipeline between Rafah and Khan Younis
Two of the 3 water pipelines from Israel are functioning

HUMANITARIAN OPERATION
at least 198 medical staff (according to the MoH), of whom at least 16 were on duty when killed (WHO), 101 UNRWA staff, 20 Palestinian Civil Defense personnel and 49 Journalists. 50 UNRWA installations damaged

MOVEMENT AND ACCESS
Closure of crossings with Israel. Rafah crossing with Egypt is partially open. Prohibition of sea access and restrictions near Israel's perimeter fence.

INCOMING TRUCKLOADS
500 trucks pre-crisis average per working day in 2023

EDUCATION
625K (100%) Students with no access to education
Over 51% of Gaza's education facilities have been hit

