

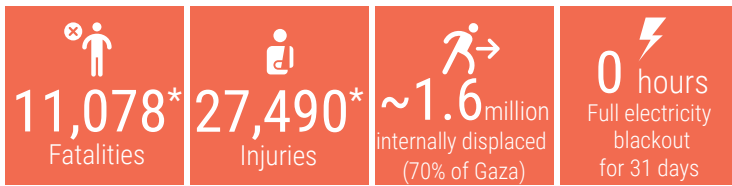
DAY 34

OVERVIEW

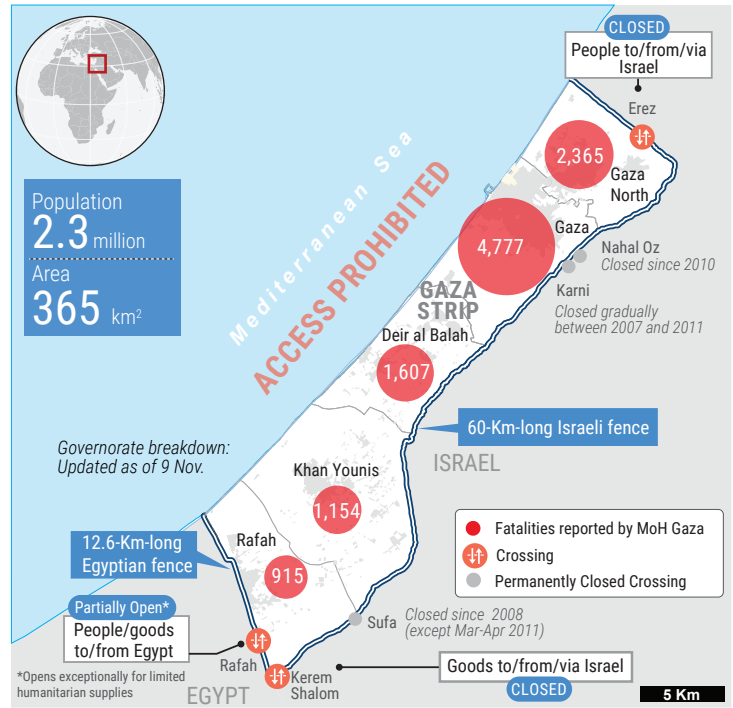
The snapshot provides a comprehensive overview of the ongoing humanitarian crisis in Gaza as of 10 November 2023, including casualties, particularly among women and children.

Significant damage has been inflicted upon critical infrastructure and essential services, affecting people's ability to maintain their dignity and basic living standards.

This snapshot highlights reported figures on the impact of hostilities on people in Gaza, where a major humanitarian crisis has unfolded.

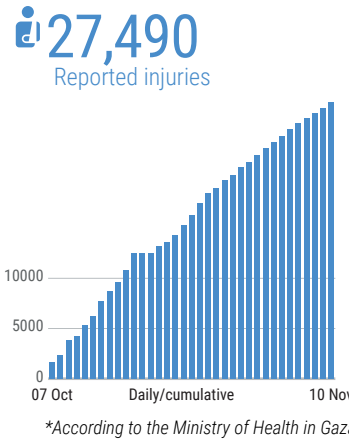
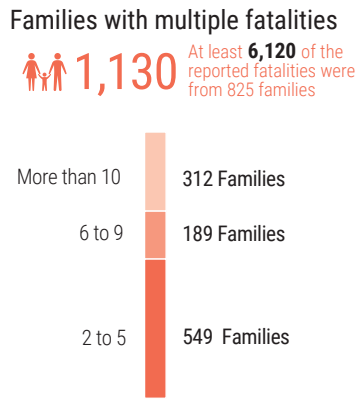


*Reported by MoH Gaza



REPORTED CASUALTIES (Cumulative) as of 10 November 2023

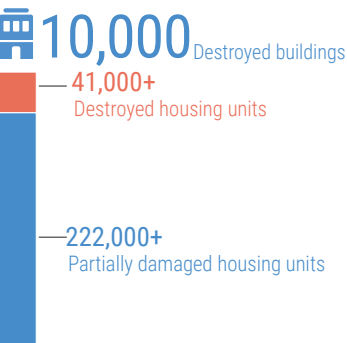
Palestinians*



Israelis**



DAMAGE*



- At least **45%** of Gaza's housing units reportedly destroyed or damaged
- 279** education facilities reportedly damaged
- 135** health facilities attacked
- 11** bakeries reportedly destroyed
- 21** hospitals and **47** Health care center out of service
- 53** ambulances damaged
- 20** WASH facilities damaged
- At least **3** churches and **67** mosques damaged

*Ministry of public works and housing as of 6 Nov.

BASIC SERVICES AND LIVELIHOODS

FOOD SECURITY

Market stocks of essential food*:
Wheat flour (**12** days), Vegetable oil (**0** days), Pulse (**0** days), Sugar (**0** days), Rice: (**0** day).

*Source: WFP

The **only** operative mill cannot transform wheat due to electricity outages

4-6 hours average waiting time to receive half of normal bread portion

WATER AND SANITATION

90% less water consumption than pre-hostilities (average)

Most of **65** sewerage pumping are not operational

50% leakage in a main water pipeline between Rafah and Khan Younis

Two of the **3** water pipelines from Israel are functioning

HEALTH

Shut down over **1/2** of the hospitals and nearly **2/3** of primary health care shut down

At high risk At least **1,000** kidney failure, **>2,000** cancer patients, **130** neonates in incubators

Critical shortages of drugs, blood products and supplies (**Fuel at the hospitals is being severely rationed**)

Evacuation orders All **13** hospitals still operational in Gaza city and Northern Gaza have received evacuation orders

EDUCATION

625K (100%) Students with no access to education

Over 51% of Gaza's education facilities have been hit

HUMANITARIAN OPERATION

at least **198** medical staff (according to the MoH), of whom at least **16** were on duty when killed (WHO), **99** UNRWA staff, **20** Palestinian Civil Defense personnel and **49** Journalists.

50 UNRWA installations damaged

MOVEMENT AND ACCESS

Closure of crossings with Israel. Rafah crossing with Egypt is partially open. Prohibition of sea access and restrictions near Israel's perimeter fence.

