

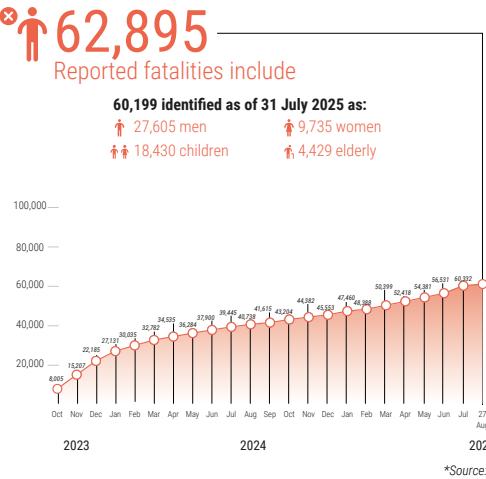
REPORTED IMPACT SNAPSHOT | GAZA STRIP

27 August 2025 at 15:00

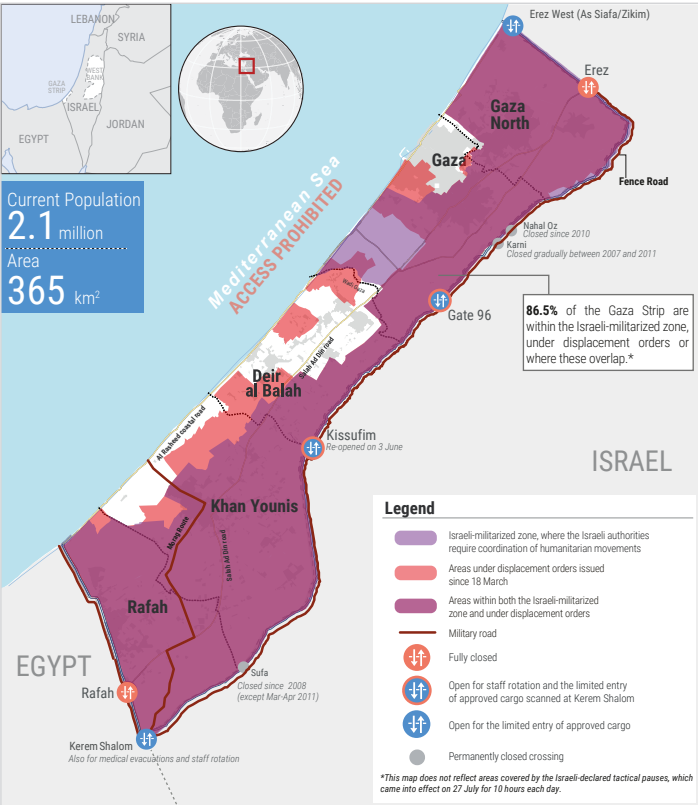
Disclaimer: Figures that are yet-to-be verified by the UN are attributed to their source. Casualty numbers have been provided by the Ministry of Health (MoH) and the Israeli authorities. The fatality breakdowns currently cited are those that the MoH in Gaza has fully identified as of 31 July 2025 out of the higher number of casualties they report. The latest casualty updates are also available on the Health Cluster's [Unified Dashboard](#).

REPORTED CASUALTIES (Cumulative) as of 27 August 2025

Palestinians\*



Israelis\*\*



FOOD SECURITY

- Famine** (IPC Phase 5) is currently occurring in Gaza governorate.
- 100%** of the analyzed **1.98** million people\* in Gaza, Deir al Balah and Khan Younis governorates are currently facing and projected to face crisis or worse levels of acute food insecurity between 16 August and 30 September 2025, as follows: **641,000** in Catastrophe (IPC Phase 5); **1.14** million in Emergency (IPC Phase 4); and **198,000** in Crisis (IPC Phase 3).
- 83%** of agricultural water wells and **71%** of greenhouses damaged (source: FAO, as of April 2025).
- 86.1%** of the total cropland is damaged (source: UNOSAT and FAO, as of 28 July)
- 1.5%** of cropland is undamaged and accessible for cultivation (source: FAO, as of 28 July).
- 72%** of the fishing fleet destroyed (source: Food Security Sector, as of December 2024).

\*Lack of adequate data did not allow for an IPC classification for North Gaza while Rafah was not analyzed due to apparent mass depopulation. (source: IPC Gaza Strip Special Snapshot, as of 22 August 2025).

HEALTH\*

- 50%** (18 out of 36) of hospitals partially functional (1 in North Gaza, 11 in Gaza city, 3 in Deir al Balah, 3 in Khan Younis and none in Rafah).
- 62%** (10 out of 16) of field hospitals partially functional, including (1 in Gaza, 4 in Deir al Balah, 4 in Khan Younis, 1 in Rafah and none in North Gaza).
- 39%** (66 out of 169) of primary health care centres functional including three fully and 63 partially.
- As of 24 August, there were **28** Emergency Medical Teams (EMTs) deployed by **17** international and **two** national organizations.
- Over **15,800** critical patients require medical evacuation abroad. Between 1 January and 20 August 2025, **2,240** patients and **3,540** companions have been evacuated outside Gaza.

\*Source: Health Cluster as of 25 August 2025, unless otherwise noted.

SHELTER\*

- 436,000** of housing units (**92%**) are destroyed (**160,000**) or damaged (**276,000**).
- ~1.4 million** people are in need of emergency shelter items, while around **1.45 million** people are estimated to require essential household items (Source: Shelter Cluster assessment, August 2025)

\*Source: Shelter Cluster

PROTECTION

- >1 million children** in need of mental health and psycho-social support (source: UNICEF).
- 62%** of people don't have access to legal documents proving property ownership (source: IRDNA, issued in February 2025).
- At least **531** aid workers killed since October 2023 (523 nationals, 8 foreigners; incl. at least 169 women and 325 men), some in the line of duty. The total includes:
  - 366** UN staff - UNRWA: 360; WHO: 1; UNDP: 2; UNOPS: 2; UNDSS: 1 (source: OCHA).
  - 54** PRCS staff and volunteers, including 29 while on duty.
  - 4** ICRC staff.
  - At least **107** other aid workers.
- >1,590** health workers killed, including some also counted under aid workers above (source: MoH, as of 19 August 2025).
- 139** Civil Defence staff killed while on duty (source: PCD).
- 245** journalists and media workers killed (source: PJS).

NUTRITION\*

- An estimated **132,000** cases of children aged 6 to 59 months are projected to suffer from acute malnutrition through June 2026, including 41,000 severe cases.
- 55,500** pregnant and breastfeeding women and **25,000** infants are projected to suffer from acute malnutrition and require urgent nutrition support between 1 July 2025 and 30 June 2026 (source: Nutrition Cluster).
- >90%** of children under two years consume fewer than two food groups per day, with high-protein foods and micronutrient-rich items extremely scarce (source: Nutrition Cluster).
- 290,000** children under five and **150,000** pregnant and breastfeeding women require feeding and micronutrient supplements (source: Nutrition Cluster).

\*Source: IPC Gaza Strip Special Snapshot, as of 22 August 2025, unless otherwise noted

WATER AND SANITATION\*

- 81%** (567 out of 696) of public WASH facilities and assets are within the Israeli-militarized zone or under displacement orders since 18 March (as of 1 August 2025).
- 96%** of households have experienced water insecurity and **90%** of key informants reported worsening levels of drinking water security in July 2025.
- 89%** of the WASH sector assets have been either destroyed or damaged (source: IRDNA, issued in February 2025).

\*Source: WASH Cluster unless otherwise noted.

EDUCATION\*

- >658,000** school-aged children and **87,000** tertiary students are left without access to formal learning spaces (source: IRDNA, issued in February 2025).
- >17,085** school students and **739** educational staff killed and **>25,213** students and **3,091** teachers injured (source: MoE, as of 26 August 2025).
- Nearly **91.8%** of schools (518 out of 564) will require full reconstruction or major rehabilitation to be functional again (as of 8 July 2025).
- >63** university buildings destroyed (source: MoE, as of 12 August 2025)
- >2,308** educational facilities, ranging from kindergartens to universities, have been destroyed (source: IRDNA, issued in February 2025).

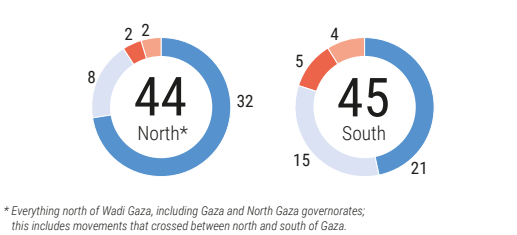
\*Source: Education Cluster, unless otherwise noted

REPORTED DAMAGE

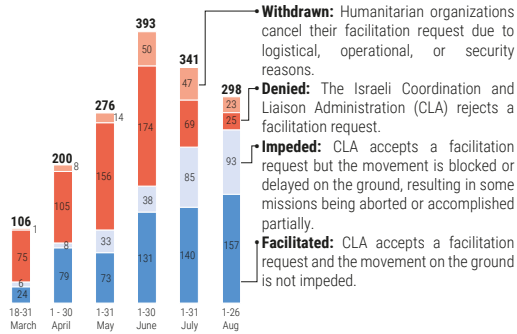
- 78%** of all structures are destroyed or damaged (source: UNOSAT, as of 8 July 2025).
- 88%** of the 48,987 assessed entities in the commerce and industry sector in Gaza have been damaged or destroyed, including 22% damaged and 66% destroyed (source: IRDNA, issued in February 2025).
- 81%** of the classified road network (primary, secondary, and tertiary roads) and 62% of the total road network (including agricultural roads) have been damaged or destroyed (source: IRDNA, issued in February 2025).

HUMANITARIAN ACCESS (20 - 26 August 2025)

Missions requiring coordination with the Israeli authorities



\*Everything north of Wadi Gaza, including Gaza and North Gaza governorates; this includes movements that crossed between north and south of Gaza.



- Withdrawn:** Humanitarian organizations cancel their facilitation request due to logistical, operational, or security reasons.
- Denied:** The Israeli Coordination and Liaison Administration (CLA) rejects a facilitation request.
- Impeded:** CLA accepts a facilitation request but the movement is blocked or delayed on the ground, resulting in some missions being aborted or accomplished partially.
- Facilitated:** CLA accepts a facilitation request and the movement on the ground is not impeded.