

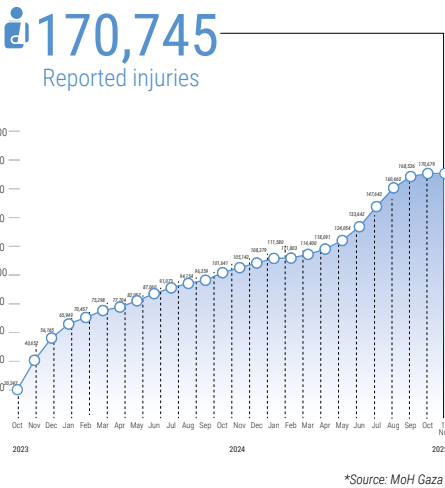
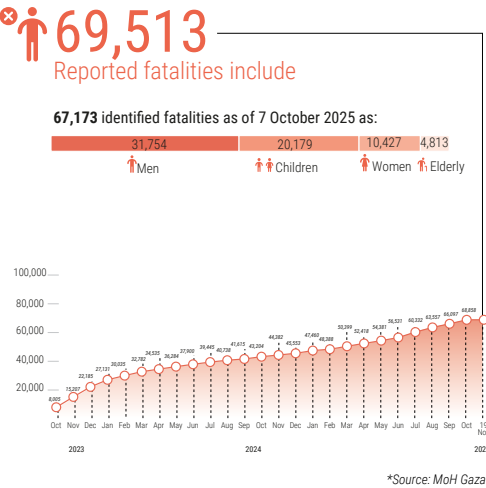
REPORTED IMPACT SNAPSHOT | GAZA STRIP

19 November 2025 at 15:00

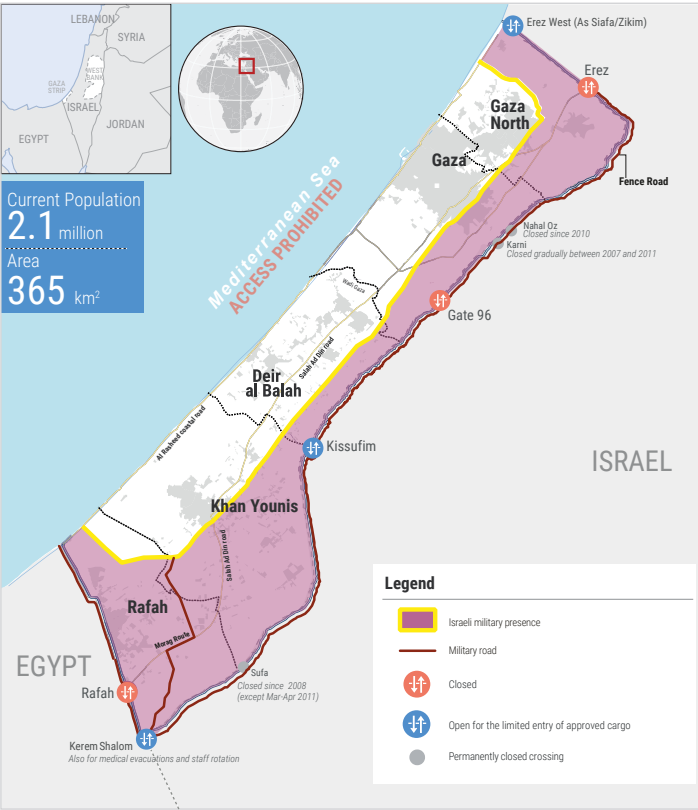
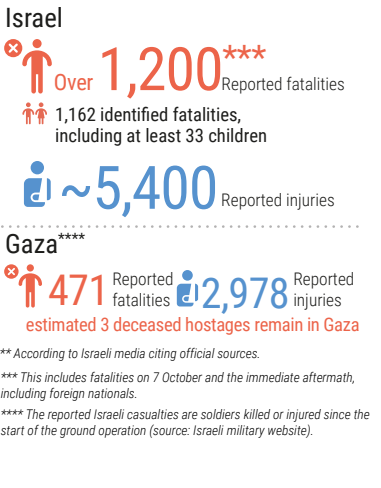
Disclaimer: Figures that are yet-to-be verified by the UN are attributed to their source. Casualty numbers have been provided by the Ministry of Health (MoH) and the Israeli authorities. The fatality breakdowns currently cited are those that the MoH in Gaza has fully identified as of 7 October 2025 out of the higher number of casualties they report. The latest casualty updates are also available on the Health Cluster's Unified Dashboard.

REPORTED CASUALTIES (Cumulative) as of 19 November 2025

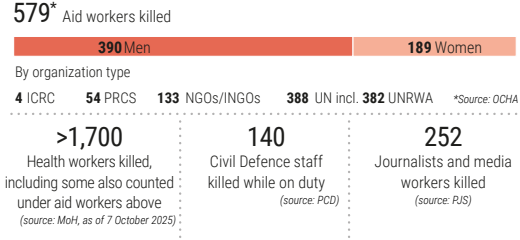
Palestinians*



Israelis**



PROTECTION



WATER AND SANITATION*

- 49% of people in Gaza accessed less than the minimum emergency standard of 6 litres of drinking water per day, as of 5 September 2025.
 - 28% accessed less than the minimum emergency standard of 9 litres of domestic water per day, as of 5 September 2025.
 - 64% of households experienced infestations of lice and mites, while 57% were affected by skin conditions such as rashes and scabies due to poor hygiene and overcrowding, as of 5 September 2025.
 - 89% of the WASH sector assets have been either destroyed or damaged (source: IRDNA, issued in February 2025).
- *Source: Joint WASH assessment, 17 August - 5 September 2025, unless otherwise noted.

SHELTER*

- ~1.48 million people are in need of emergency shelter items, while around 1.47 million people are estimated to require essential household items.
 - 320,622 housing units in Gaza have been damaged (source: UNOSAT, as of 11 October 2025)
- *Source: Shelter Cluster assessment, October 2025, unless otherwise noted.

FOOD SECURITY*

- 2 meals a day on average were consumed by households, 1-10 November 2025.
 - 10% of households went a full day without eating at least once in the last 30 days, 1-10 November 2025.
 - 25% of households reported eating only one meal daily, 1-10 November 2025.
 - >50% of households relied on waste burning to prepare food, 1-10-November 2025
 - 86.7% of agricultural water wells damaged (source: FAO, as of 26 September 2025).
 - 79.5% of greenhouses damaged (source: UNOSAT and FAO, as of 5 October 2025).
 - 87% of cropland damaged, including: 89% of orchard and other trees (incl. 90% of olive trees), 88.1% of field crops, and 80.2% of vegetables (source: UNOSAT and FAO, as of 28 September).
 - 4% of Gaza's cropland is undamaged and accessible (source: UNOSAT and FAO, as of 15 October).
- *Source: WFP Market Monitor, October 2025, unless otherwise noted.

NUTRITION*

- >90% of children under two years consume fewer than two food groups per day, with high-protein foods and micronutrient-rich items extremely scarce (as of September 2025).
 - 290,000 children between six months and five years and 150,000 pregnant and breastfeeding women require feeding and micronutrient supplements (monthly caseload, January-December 2025).
- *Source: Nutrition Cluster, unless otherwise noted.

HEALTH*

- 35 Emergency Medical Teams (EMTs) including 102 international personnel, as of 19 November.
 - One million people in Gaza require mental health interventions (source: WHO, as of October 2025).
 - One in five children under three years of age are either zero-dose or have missed vaccinations, putting them at risk of vaccine-preventable disease outbreaks (source: WHO, as of 5 November 2025).
 - Over 16,500 critical patients including 4,000 children, require medical evacuation abroad. Since 1 January 2025, 2,589 patients and 4,562 companions have been evacuated outside Gaza, including 19 patients and 33 companions between 12 November and 18 November.
- *Source: Health Cluster, unless otherwise noted

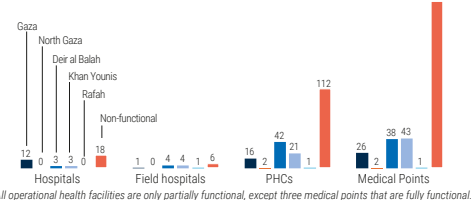
EDUCATION*

- >18,639 school students and 792 educational staff killed and >27,319 students and 3,251 teachers injured (source: MoE, as of 4 November 2025).
 - 637,475 school-aged children without sustained access to formal, in-person education.
 - 64,000 children at the age of five without access to early childhood education.
 - ~93% of school buildings (526 out of 564) will require full reconstruction or major rehabilitation to be functional again (as of 11 October 2025).
 - >63 university buildings destroyed (source: MoE, as of 12 August 2025).
- *Source: Education Cluster, unless otherwise noted

REPORTED DAMAGE

- 81% of all structures are destroyed or damaged (source: UNOSAT, as of 11 October 2025).
- 88% of the 48,987 assessed establishments in the commerce and industry sector in Gaza have been damaged or destroyed, including 22% damaged and 66% destroyed (source: IRDNA, issued in February 2025).
- 77% of the total road network has been damaged (including destroyed, affected roads and roads restricted by obstacles), across the Gaza Strip (source: UNOSAT, as of 8 July 2025).

HEALTH SERVICES FUNCTIONALITY** (as of 16 November)



HUMANITARIAN ACCESS

