

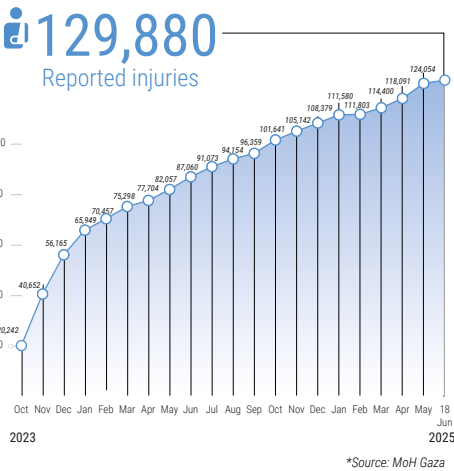
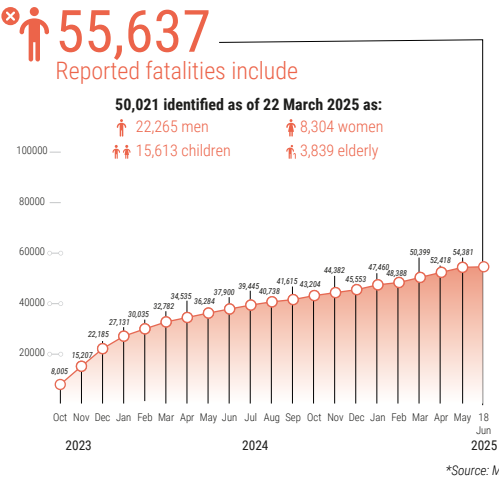
REPORTED IMPACT SNAPSHOT | GAZA STRIP

18 June 2025 at 15:00

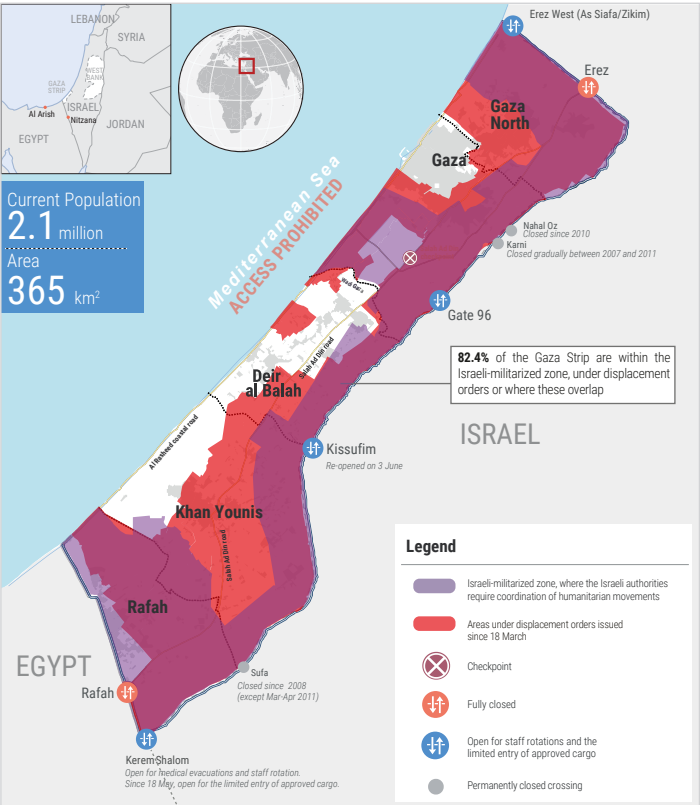
Disclaimer: Figures that are yet-to-be verified by the UN are attributed to their source. Casualty numbers have been provided by the Ministry of Health (MoH) and the Israeli authorities. The fatality breakdowns currently cited are those that the MoH in Gaza has fully identified as of 22 March 2025 out of the higher number of casualties they report. The latest casualty updates are also available on the Health Cluster's Unified Dashboard.

REPORTED CASUALTIES (Cumulative) as of 18 June 2025

Palestinians*



Israelis**



FOOD SECURITY

- 100% of the analysed population (2.1 million) is projected* to face high levels of acute food insecurity classified in IPC Phase 3 (Crisis) or above, including:
 - One million people facing emergency levels of food insecurity (IPC Phase 4).
 - 470K people facing catastrophic levels of food insecurity (IPC Phase 5).
- 83% of croplands, 83% of agricultural water wells and 71% of greenhouses damaged (source: FAO, as of April 2025).
- < 5% of cropland area is available for cultivation (source: FAO, as of April 2025)
- 72% of the fishing fleet destroyed (source: Food Security Sector, as of December 2024).

*Source: IPC Projection, 11 May - 30 September 2025

WATER AND SANITATION*

- 77% (475 out of 618) of WASH facilities and assets are within the Israeli-militarized zone or under displacement orders since 18 March (as of 17 June 2025).
- 90% of households have experienced water insecurity and 75% reported worsening levels of drinking water security in early April 2025.
- 89% of the WASH sector assets have been either destroyed or partially damaged (source: IRDNA, issued in February 2025).

*Source: WASH Cluster unless otherwise noted

SHELTER*

- 436,000 of housing units (92%) are destroyed (160,000) or damaged (276,000).
- ~1.1 million people are in need of emergency shelter items, while around 1.1 million people are in need of household items. (Source: shelter cluster assessment, June 2025).

*Source: Shelter Cluster

PROTECTION

- >1 million children in need of mental health and psycho-social support (source: UNICEF).
- 62% of people don't have access to legal documents proving property ownership (source: IRDNA, issued in February 2025).
- At least 467 aid workers killed (459 nationals, 8 foreigners; incl. at least 161 women and 301 men), some in the line of duty. The total includes:
 - 323 UN staff - UNRWA: 317; WHO: 1; UNDP: 2; UNOPS: 2; UNDSS: 1.
 - 47 PRCS staff and volunteers, including 27 while on duty.
 - At least 97 other aid workers.
- 1,580 health workers killed, including some also counted under aid workers above (source: MoH, as of 25 May 2025).
- 116 Civil Defence staff killed while on duty (source: PCD).
- 225 journalists and media workers killed (source: PJS).

NUTRITION*

- 85 Outpatient Therapeutic Programme (OTP) sites remain operational, as of 27 May.
- >92% of children aged 6-23 months and pregnant and breastfeeding women are not meeting their nutrient requirements due to lack of minimum dietary diversity (as of February 2025)
- 290,000 children under five and 150,000 pregnant and breastfeeding women require feeding and micronutrient supplements.
- ~17,000 pregnant and breastfeeding women are estimated to require treatment for acute malnutrition between April 2025 and March 2026 (source: IPC Gaza Strip Special Snapshot, 12 May 2025).
- ~71,000 cases of acute malnutrition among children aged 6 to 59 months, including 14,100 severe cases, are expected to occur between April 2025 and March 2026 (source: IPC Gaza Strip Special Snapshot, 12 May 2025).

*Source: Nutrition Cluster unless otherwise noted

HEALTH*

- 47% (17 out of 36**) of hospitals partially functional (11 in Gaza city, 3 in Deir al Balah, 3 in Khan Younis and none in Rafah and North Gaza).
- 47% (7 out of 15) field hospitals functional, including one fully and 6 partially (1 in Gaza, 2 in Deir al Balah, 3 in Khan Younis, 1 in Rafah and none in North Gaza).
- 38% (62 out of 162) of primary health care centres functional including 5 fully and 57 partially.
- 21 Emergency Medical Teams deployed, including 19 international and 2 national (6 in Gaza city, 6 in Deir al Balah, 8 in Khan Younis, 1 in Rafah), as of 10 June.
- Between 10,500 and 12,500 patients, including over 4,000 children, require medical evacuation abroad. Between 1 February and 11 June 2025, 1,996 patients and 3,016 companions have been evacuated outside Gaza. This includes 315 patients and 493 companions evacuated since 18 March 2025.

*Source: Health Cluster as of 11 June 2025, unless otherwise noted

**The two hospitals that were previously merged are now counted separately once again.

EDUCATION*

- >658,000 school-aged children and 87,000 tertiary students are left without access to formal learning spaces (source: IRDNA, issued in February 2025).
- >15,379 school students and 691 educational staff killed and >23,105 students and 2,926 teachers injured (source: MoE, as of 17 June 2025).
- Nearly 88.8% of schools (501 out of 564) will require full reconstruction or major rehabilitation to be functional again (as of 4 April 2025).
- >60 university buildings destroyed (source: MoE).
- >2,308 educational facilities, ranging from kindergartens to universities, have been destroyed (source: IRDNA, issued in February 2025).

*Source: Education Cluster, unless otherwise noted

REPORTED DAMAGE

- 70% of all structures are destroyed or damaged (source: UNOSAT, as of 4 April 2025).
- 88% of the 48,987 assessed entities in the commerce and industry sector in Gaza have been damaged or destroyed, including 22% damaged and 66% destroyed (source: IRDNA, issued in February 2025).
- 81% of the classified road network (primary, secondary, and tertiary roads) and 62% of the total road network (including agricultural roads) have been damaged or destroyed (source: IRDNA, issued in February 2025).

HUMANITARIAN ACCESS (11 to 17 June 2025)

Missions requiring coordination with the Israeli authorities

