

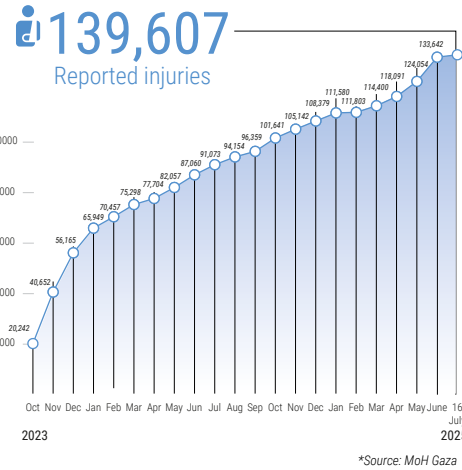
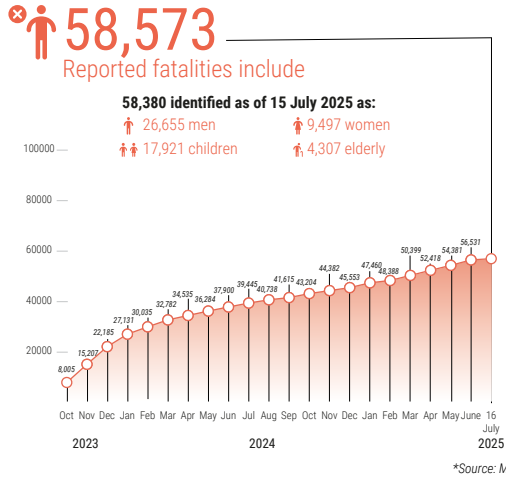
REPORTED IMPACT SNAPSHOT | GAZA STRIP

16 July 2025 at 15:00

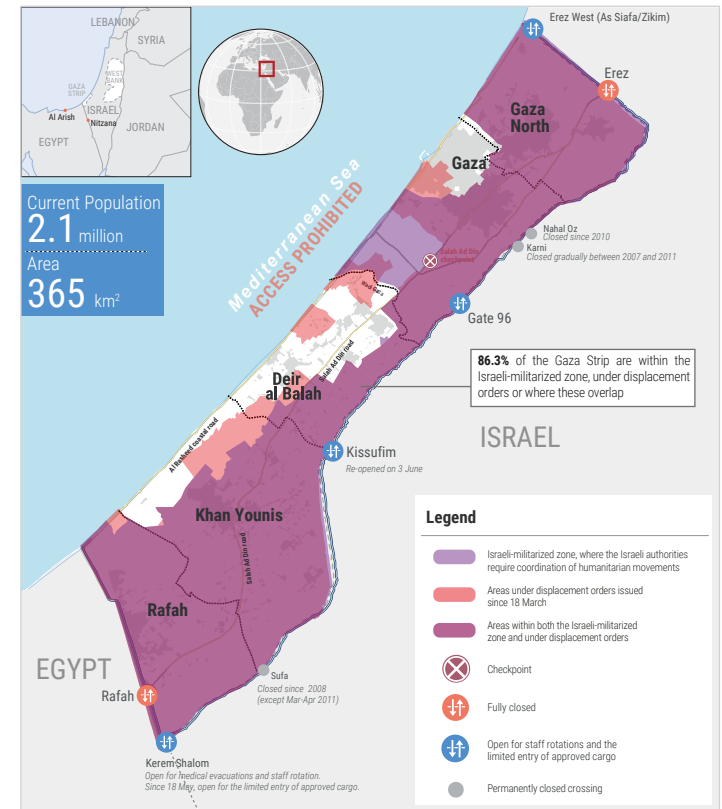
Disclaimer: Figures that are yet-to-be verified by the UN are attributed to their source. Casualty numbers have been provided by the Ministry of Health (MoH) and the Israeli authorities. The fatality breakdowns currently cited are those that the MoH in Gaza has fully identified as of 15 July 2025 out of the higher number of casualties they report. The latest casualty updates are also available on the Health Cluster's [Unified Dashboard](#).

REPORTED CASUALTIES (Cumulative) as of 16 July 2025

Palestinians*



Israelis**



FOOD SECURITY

- 100%** of the analysed population (2.1 million) is projected* to face high levels of acute food insecurity classified in IPC Phase 3 (Crisis) or above, including:
 - One million** people facing emergency levels of food insecurity (IPC Phase 4).
 - 470K** people facing catastrophic levels of food insecurity (IPC Phase 5).
- 83%** of croplands, **83%** of agricultural water wells and **71%** of greenhouses damaged (source: FAO, as of April 2025).
- <5%** of cropland area is available for cultivation (source: FAO, as of April 2025)
- 72%** of the fishing fleet destroyed (source: Food Security Sector, as of December 2024).

*Source: IPC Projection, 11 May - 30 September 2025

PROTECTION

- >1 million children** in need of mental health and psycho-social support (source: UNICEF).
- 62%** of people don't have access to legal documents proving property ownership (source: IRDNA, issued in February 2025).
- At least **483 aid workers** killed (475 nationals, 8 foreigners; incl. at least 165 women and 306 men), some in the line of duty. The total includes:
 - 326 UN staff** - UNRWA: 320; WHO: 1; UNDP: 2; UNOPS: 2; UNDSS: 1.
 - 48 PRCS staff** and volunteers, including 28 while on duty.
 - 4 ICRC staff.**
 - At least **105 other aid workers.**
- 1,580 health workers** killed, including some also counted under aid workers above (source: MoH, as of 25 May 2025).
- 131 Civil Defence staff** killed while on duty (source: PCD).
- 226 journalists and media workers** killed (source: PJS).

NUTRITION*

- >92%** of children aged 6-23 months and pregnant and breastfeeding women are not meeting their nutrient requirements due to lack of minimum dietary diversity (as of February 2025)
- 290,000 children** under five and **150,000 pregnant and breastfeeding women** require feeding and micronutrient supplements.
- ~17,000 pregnant and breastfeeding women** are estimated to require treatment for acute malnutrition between April 2025 and March 2026 (source: IPC Gaza Strip Special Snapshot, 12 May 2025).
- ~71,000 cases** of acute malnutrition among children aged 6 to 59 months, including **14,100 severe cases**, are expected to occur between April 2025 and March 2026 (source: IPC Gaza Strip Special Snapshot, 12 May 2025).

*Source: Nutrition Cluster unless otherwise noted

HEALTH*

- 47%** (17 out of 36**) of hospitals partially functional (1 in North Gaza, 10 in Gaza city, 3 in Deir al Balah, 3 in Khan Younis and none in Rafah).
- 62%** (10 out of 16) of field hospitals partially functional, including (1 in Gaza, 4 in Deir al Balah, 4 in Khan Younis, 1 in Rafah and none in North Gaza).
- 37%** (63 out of 170) of primary health care centres partially functional.
- As of 13 July, there were 23 Emergency Medical Teams (EMTs) deployed.
- Over **10,000 patients** require medical evacuation abroad. Between 1 February and 2 July 2025, **2,019 patients** and **3,062 companions** have been evacuated outside Gaza. This includes **338 patients** and **539 companions** evacuated since 18 March 2025.

*Source: Health Cluster as of 14 July 2025, unless otherwise noted.

**The two hospitals that were previously merged are now counted separately once again.

SHELTER*

- 436,000** of housing units (**92%**) are destroyed (**160,000**) or damaged (**276,000**).
- ~1.3 million** people are in need of emergency shelter items, while around **1.3 million** people are estimated to require household items (Source: shelter cluster assessment, July 2025).

*Source: Shelter Cluster

WATER AND SANITATION*

- 80%** (559 out of 696) of public WASH facilities and assets are within the Israeli-militarized zone or under displacement orders since 18 March (as of 11 July 2025).
- 93%** of households have experienced water insecurity and **91%** reported worsening levels of drinking water security in June 2025.
- 89%** of the WASH sector assets have been either destroyed or partially damaged (source: IRDNA, issued in February 2025).

*Source: WASH Cluster unless otherwise noted.

**The increase in the number of WASH assets and facilities to 696 reflects a recent update to baseline data.

EDUCATION*

- >658,000** school-aged children and **87,000** tertiary students are left without access to formal learning spaces (source: IRDNA, issued in February 2025).
- >16,137** school students and **712** educational staff killed and **>24,122** students and **3,064** teachers injured (source: MoE, as of 15 July 2025).
- Nearly **88.8%** of schools (501 out of 564) will require full reconstruction or major rehabilitation to be functional again (as of 4 April 2025).
- >60** university buildings destroyed (source: MoE).
- >2,308** educational facilities, ranging from kindergartens to universities, have been destroyed (source: IRDNA, issued in February 2025).

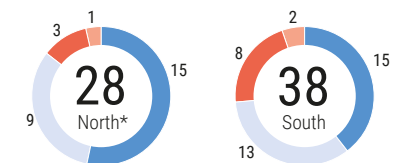
*Source: Education Cluster, unless otherwise noted

REPORTED DAMAGE

- 70%** of all structures are destroyed or damaged (source: UNOSAT, as of 4 April 2025).
- 88%** of the 48,987 assessed entities in the commerce and industry sector in Gaza have been damaged or destroyed, including 22% damaged and 66% destroyed (source: IRDNA, issued in February 2025).
- 81%** of the classified road network (primary, secondary, and tertiary roads) and 62% of the total road network (including agricultural roads) have been damaged or destroyed (source: IRDNA, issued in February 2025).

HUMANITARIAN ACCESS (9 to 15 July 2025)

Missions requiring coordination with the Israeli authorities



*Everything north of Wadi Gaza, including Gaza and North Gaza governorates; this includes movements that crossed between north and south of Gaza.

