

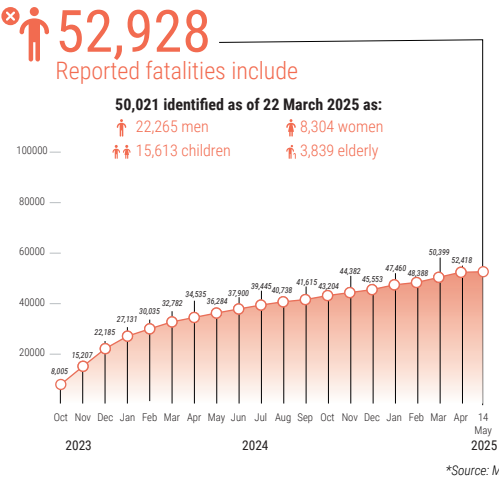
REPORTED IMPACT SNAPSHOT | GAZA STRIP

14 May 2025 at 15:00

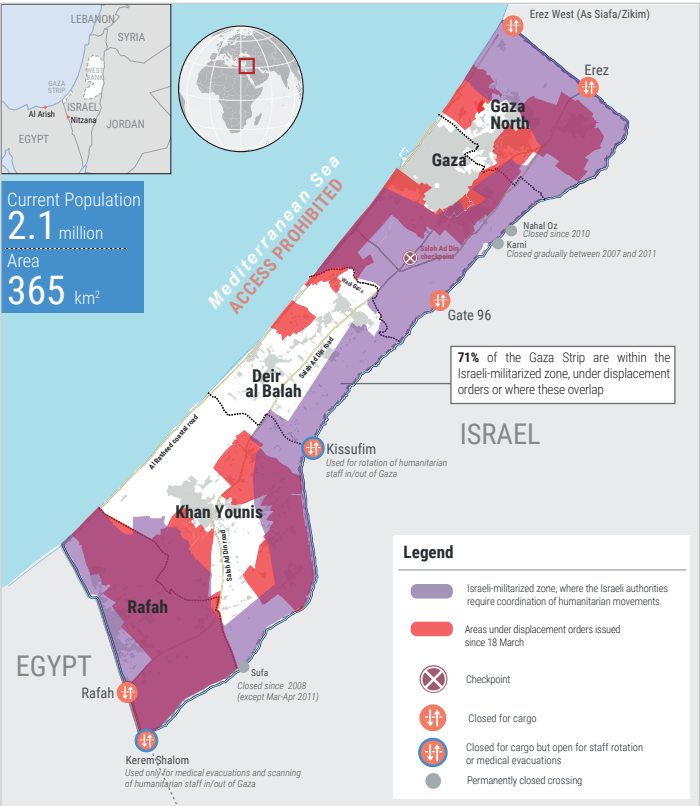
Disclaimer: Figures that are yet-to-be verified by the UN are attributed to their source. Casualty numbers have been provided by the Ministry of Health (MoH) and the Israeli authorities. The fatality breakdowns currently cited are those that the MoH in Gaza has fully identified as of 22 March 2025 out of the higher number of casualties they report. The latest casualty updates are also available on the Health Cluster's Unified Dashboard.

REPORTED CASUALTIES (Cumulative) as of 14 May 2025

Palestinians\*



Israelis\*\*



FOOD SECURITY

- 100% of the analysed population (2.1 million) is projected\* to face high levels of acute food insecurity classified in IPC Phase 3 (Crisis) or above, including:
    - over a million people facing emergency levels of food insecurity (IPC Phase 4).
    - 470K people facing catastrophic levels of food insecurity (IPC Phase 5).
  - 82% of croplands, 55% of on-farm irrigation systems and 78% of greenhouses damaged (source: IRDNA, issued in February 2025).
  - 72% of the fishing fleet destroyed (source: Food Security Sector, as of December 2024).
  - 95% (~15,000) of Gaza's cattle have died, with nearly all calves slaughtered (source: FAO, as of 31 December 2024).
  - 36% sheep, 39% goats, 3.8% cattle and 1.4% layers and broilers remain alive (source: FAO, as of February 2025).
  - ~68% of agricultural wells damaged (source: FAO, as of 31 December 2024).
- \*Source: IPC Projection, 11 May - 30 September 2025

WATER AND SANITATION\*

- 90% of households have experienced water insecurity between 31 March and 14 April 2025.
  - 89% of the WASH sector assets have been either destroyed or damaged (source: IRDNA, issued in February 2025).
  - 78% of the population is at risk of sanitation-related threats from rodents and pests, 42% from solid waste, 26% from sewage, and 46% from excreta or sewage release.
  - 65% of people in Gaza receive less than 6 litres per person per day for drinking and cooking (minimum emergency standard for OPT).
  - 35% of people in Gaza receive less than 15 litres per person per day for drinking, cooking, and basic hygiene (minimum emergency standard for OPT).
- \*Source: WASH Cluster, as of January 2025, unless otherwise noted

SHELTER\*

- 436,000 of housing units (92%) are destroyed (160,000) or damaged (276,000).
  - ~1.1 million people are in need of emergency shelter items, while around 670,000 people are in need of household items. (source: shelter cluster assessment, April 2025)
- \*Source: Shelter Cluster

PROTECTION

- >1 million children in need of mental health and psycho-social support (source: UNICEF).
- 62% of people don't have access to legal documents proving property ownership (source: IRDNA, issued in February 2025).
- At least 430 aid workers killed (422 nationals, 8 foreigners), some in the line of duty, including:
  - 305 UN staff - UNRWA: 300; WHO: 1; UNDP: 1; UNOPS: 2; UNDSS: 1.
  - 44 PRCS staff and volunteers, including 27 while on duty.
  - At least 81 other aid workers.
- >1,400 health workers killed, including some also counted under aid workers above (source: MoH, as of 15 Apr 2025).
- 110 Civil Defence staff killed while on duty (source: PCD).
- 213 journalists and media workers killed (source: PJS).

NUTRITION\*

- 87 Outpatient Therapeutic Programme (OTP) sites remain operational, as of 14 May – a 25% decrease compared to February.
  - >92% of children aged 6-23 months and pregnant and breastfeeding women are not meeting their nutrient requirements due to lack of minimum dietary diversity (as of February 2025)
  - 290,000 children under five and 150,000 pregnant and breastfeeding women require feeding and micronutrient supplements.
  - ~17,000 pregnant and breastfeeding women are estimated to require treatment for acute malnutrition between April 2025 and March 2026 (source: IPC Gaza Strip Special Snapshot, 12 May 2025).
  - ~71,000 cases of acute malnutrition among children aged 6 to 59 months, including 14,100 severe cases, are expected to occur between April 2025 and March 2026 (source: IPC Gaza Strip Special Snapshot, 12 May 2025).
- \*Source: Nutrition Cluster unless otherwise noted

HEALTH\*

- 61% (22 out of 36\*\*) of hospitals partially functional (4 in North Gaza, 11 in Gaza city, 3 in Deir al Balah, 4 in Khan Younis).
  - 8 field hospitals functional, including 5 fully and 3 partially (1 in Gaza, 2 in Deir al Balah, 3 in Khan Younis, and 2 in Rafah).
  - 48% (75 out of 155) of primary health care centres functional, including ten fully and 65 partially.
  - 33% (9 out of 27) of UNRWA health centres functional (source: UNRWA, as of 4 May).
  - 22 EMTs, 6 in Gaza city, 7 in Deir al Balah, 8 in Khan Younis, 1 in Rafah, as of 12 of May.
  - Between 10,500 and 12,500 patients, including over 4,000 children, require medical evacuation abroad. Between 1 February and 1 May 2025, 1,825 patients, including 690 children, and 2,750 companions have been evacuated outside Gaza. This includes 123 patients and 187 companions evacuated since 18 March 2025.
- \*Source: Health Cluster as of 12 May 2025, unless otherwise noted
- \*\*The two hospitals that were previously merged are now counted separately once again.

EDUCATION\*

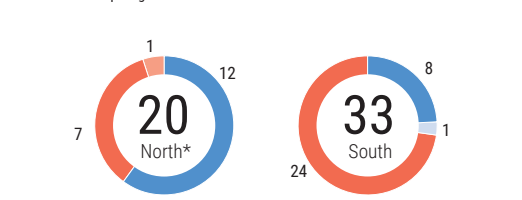
- >658,000 school-aged children and 87,000 tertiary students are left without access to formal learning spaces (source: IRDNA, issued in February 2025).
  - 13,677 school students and 663 educational staff killed and >21,897 students and 2,825 teachers injured (source: MoE, as of 29 April 2025).
  - Nearly 88.8% of schools (501 out of 564) will require full reconstruction or major rehabilitation to be functional again (as of 4 April 2025).
  - 57 university buildings destroyed (source: MoE).
  - >2,308 educational facilities, ranging from kindergartens to universities, have been destroyed (source: IRDNA, issued in February 2025).
- \*Source: Education Cluster, unless otherwise noted

REPORTED DAMAGE

- 69% of all structures are destroyed or damaged (source: UNOSAT, as of 1 December 2024).
- 88% of the 48,987 assessed entities in the commerce and industry sector in Gaza have been damaged or destroyed, including 22% damaged and 66% destroyed (source: IRDNA, issued in February 2025).
- 81% of the classified road network (primary, secondary, and tertiary roads) and 62% of the total road network (including agricultural roads) have been damaged or destroyed (source: IRDNA, issued in February 2025).

HUMANITARIAN ACCESS (7 - 13 May)

Missions requiring coordination with the Israeli authorities



\*Everything north of Wadi Gaza, including Gaza and North Gaza governorates; this includes movements that crossed between north and south of Gaza.

