

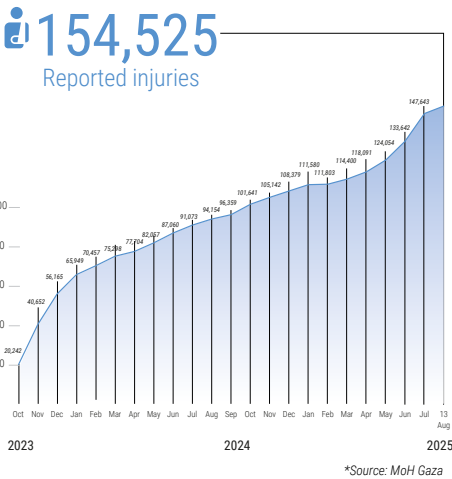
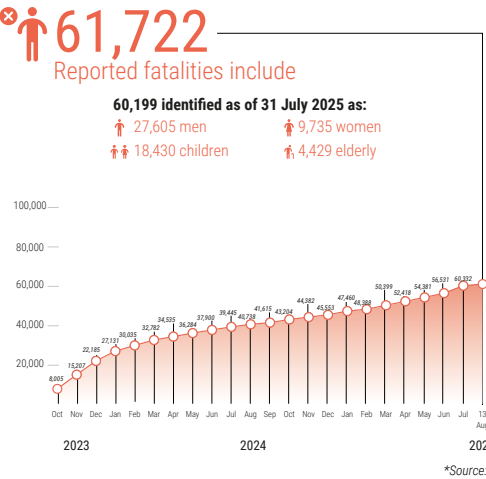
REPORTED IMPACT SNAPSHOT | GAZA STRIP

13 August 2025 at 15:00

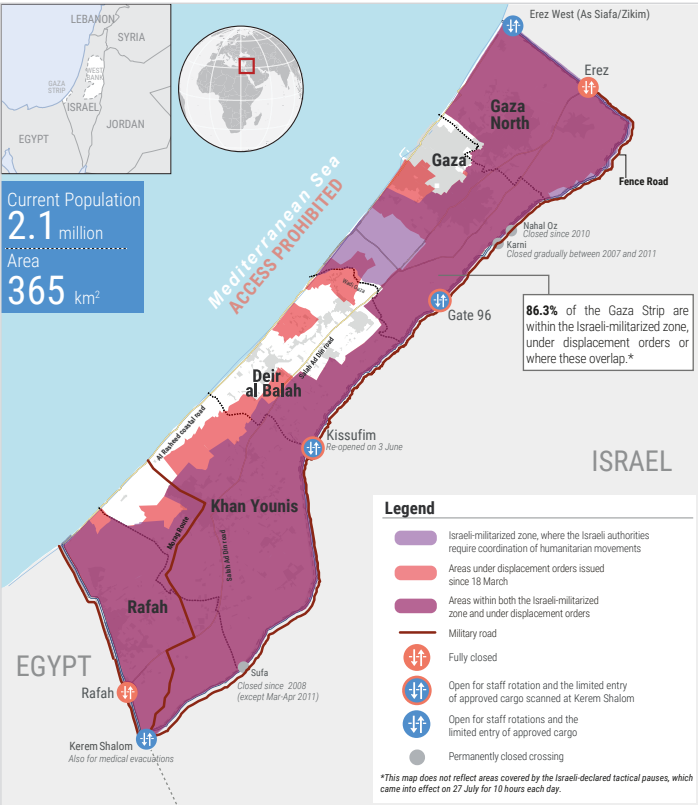
Disclaimer: Figures that are yet-to-be verified by the UN are attributed to their source. Casualty numbers have been provided by the Ministry of Health (MoH) and the Israeli authorities. The fatality breakdowns currently cited are those that the MoH in Gaza has fully identified as of 31 July 2025 out of the higher number of casualties they report. The latest casualty updates are also available on the Health Cluster's [Unified Dashboard](#).

REPORTED CASUALTIES (Cumulative) as of 13 August 2025

Palestinians\*



Israelis\*\*



FOOD SECURITY

- 81% of households reported poor food consumption in July, up from 33% in April; 24% of households are experiencing very severe hunger in July, compared with 4% in April; and nearly 9 out of 10 households resorted to extremely severe coping mechanisms to feed themselves (source: IPC Alert, 29 July 2025).
  - 100% of the analysed population (2.1 million) is projected\* to face high levels of acute food insecurity classified in IPC Phase 3 (Crisis) or above, including:
    - One million people facing emergency levels of food insecurity (IPC Phase 4).
    - 470K people facing catastrophic levels of food insecurity (IPC Phase 5).
  - 83% of agricultural water wells and 71% of greenhouses damaged (source: FAO, as of April 2025).
  - 86% of the permanent crop fields damaged (source: UNOSAT and FAO analysis, as of 28 July 2025).
  - 1.5% of cropland area is available for cultivation (source: FAO, as of July 2025).
  - 72% of the fishing fleet destroyed (source: Food Security Sector, as of December 2024).
- \*Source: IPC Projection, 11 May - 30 September 2025

HEALTH\*

- 50% (18 out of 36\*\*) of hospitals partially functional (1 in North Gaza, 11 in Gaza city, 3 in Deir al Balah, 3 in Khan Younis and none in Rafah).
  - 62% (10 out of 16) of field hospitals partially functional, including (1 in Gaza, 4 in Deir al Balah, 4 in Khan Younis, 1 in Rafah and none in North Gaza).
  - 39% (66 out of 170) of primary health care centres functional including one fully and 65 partially.
  - As of 3 August, there were 32 Emergency Medical Teams (EMTs) deployed by 20 international and two national organizations.
  - Over 14,800 patients require medical evacuation abroad. Between 1 February and 6 August 2025, 2,116 patients and 3,305 companions have been evacuated outside Gaza.
- \*Source: Health Cluster as of 9 August 2025, unless otherwise noted.
- \*\*The two hospitals that were previously merged are now counted separately once again.
- SHELTER\*
- 436,000 of housing units (92%) are destroyed (160,000) or damaged (276,000).
  - ~1.35 million people are in need of emergency shelter items, while around 1.4 million people are estimated to require essential household items (Source: shelter cluster assessment, July 2025)
- \*Source: Shelter Cluster

PROTECTION

- >1 million children in need of mental health and psycho-social support (source: UNICEF).
- 62% of people don't have access to legal documents proving property ownership (source: IRDNA, issued in February 2025).
- At least 520 aid workers killed (512 nationals, 8 foreigners; incl. at least 169 women and 325 men), some in the line of duty. The total includes:
  - 356 UN staff - UNRWA: 350; WHO: 1; UNDP: 2; UNODS: 1.
  - 53 PRCS staff and volunteers, including 29 while on duty.
  - 4 ICRC staff.
  - At least 107 other aid workers.
- >1,580 health workers killed, including some also counted under aid workers above (source: MoH, as of 25 May 2025).
- 137 Civil Defence staff killed while on duty (source: PCD).
- 238 journalists and media workers killed (source: PJS).

NUTRITION\*

- >92% of children aged 6-23 months and pregnant and breastfeeding women are not meeting their nutrient requirements due to lack of minimum dietary diversity (as of February 2025)
  - 290,000 children under five and 150,000 pregnant and breastfeeding women require feeding and micronutrient supplements.
  - ~17,000 pregnant and breastfeeding women are estimated to require treatment for acute malnutrition between April 2025 and March 2026 (source: IPC Gaza Strip Special Snapshot, 12 May 2025).
  - ~71,000 cases of acute malnutrition among children aged 6 to 59 months, including 14,100 severe cases, are expected to occur between April 2025 and March 2026 (source: IPC Gaza Strip Special Snapshot, 12 May 2025).
- \*Source: Nutrition Cluster unless otherwise noted

WATER AND SANITATION\*

- 81% (567 out of 696) of public WASH facilities and assets are within the Israeli-militarized zone or under displacement orders since 18 March (as of 1 August 2025).
  - 96% of households have experienced water insecurity and 90% of key informants reported worsening levels of drinking water security in July 2025.
  - 89% of the WASH sector assets have been either destroyed or partially damaged (source: IRDNA, issued in February 2025).
- \*Source: WASH Cluster unless otherwise noted.
- \*\*The increase in the number of WASH assets and facilities to 696 reflects a recent update to baseline data.

EDUCATION\*

- >658,000 school-aged children and 87,000 tertiary students are left without access to formal learning spaces (source: IRDNA, issued in February 2025).
  - >16,613 school students and 731 educational staff killed and >24,730 students and 3,080 teachers injured (source: MoE, as of 12 August 2025).
  - Nearly 91.8% of schools (518 out of 564) will require full reconstruction or major rehabilitation to be functional again (as of 8 July 2025).
  - > 63 university buildings destroyed (source: MoE, as of 12 August 2025)
  - >2,308 educational facilities, ranging from kindergartens to universities, have been destroyed (source: IRDNA, issued in February 2025).
- \*Source: Education Cluster, unless otherwise noted

REPORTED DAMAGE

- 78% of all structures are destroyed or damaged (source: UNOSAT, as of 8 July 2025).
- 88% of the 48,987 assessed entities in the commerce and industry sector in Gaza have been damaged or destroyed, including 22% damaged and 66% destroyed (source: IRDNA, issued in February 2025).
- 81% of the classified road network (primary, secondary, and tertiary roads) and 62% of the total road network (including agricultural roads) have been damaged or destroyed (source: IRDNA, issued in February 2025).

HUMANITARIAN ACCESS (6 to 12 August 2025)

Missions requiring coordination with the Israeli authorities

