

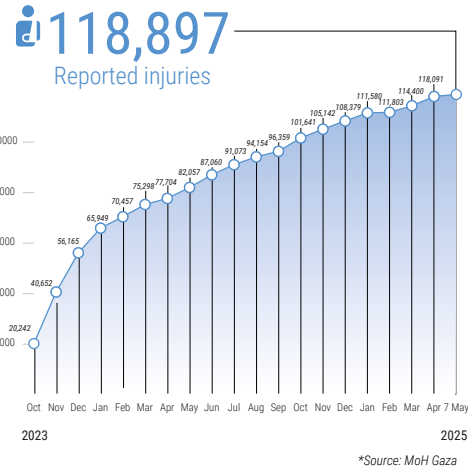
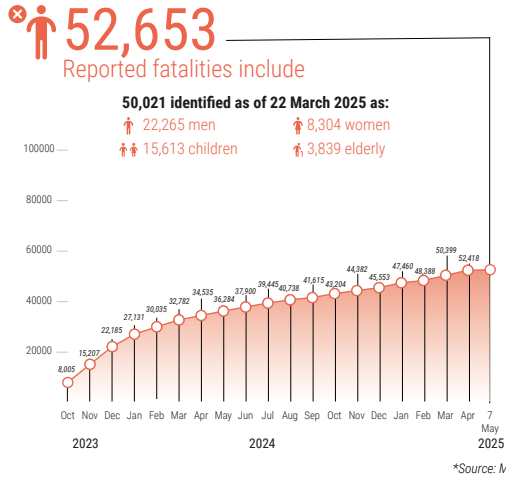
REPORTED IMPACT SNAPSHOT | GAZA STRIP

7 May 2025 at 15:00

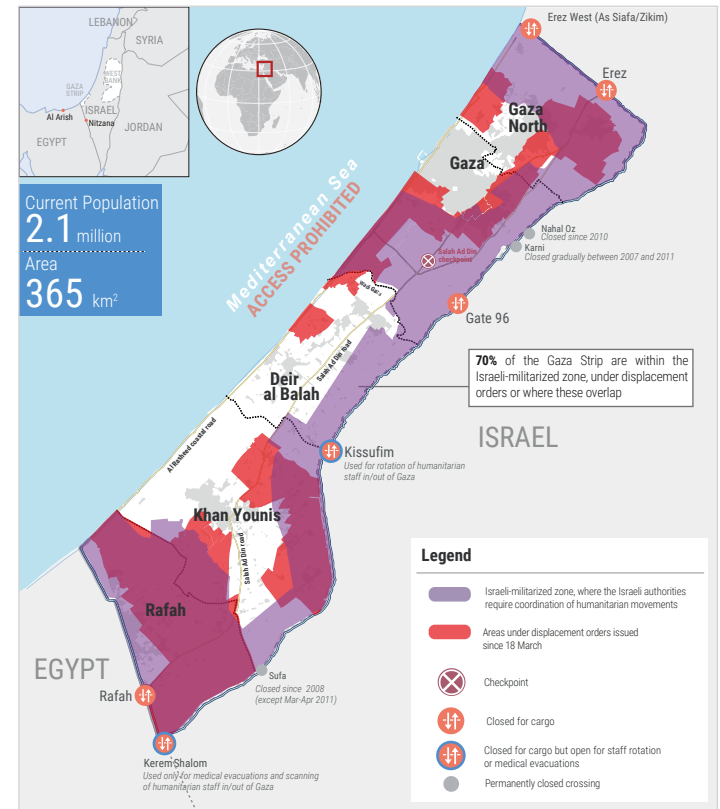
Disclaimer: Figures that are yet-to-be verified by the UN are attributed to their source. Casualty numbers have been provided by the Ministry of Health (MoH) and the Israeli authorities. The fatality breakdowns currently cited are those that the MoH in Gaza has fully identified as of 22 March 2025 out of the higher number of casualties they report. The latest casualty updates are also available on the Health Cluster's [Unified Dashboard](#).

REPORTED CASUALTIES (Cumulative) as of 7 May 2025

Palestinians**



Israelis**



FOOD SECURITY

- 91%** of the analyzed population (1.95 million) has been projected* to face high levels of acute food insecurity classified in IPC Phase 3 (Crisis) or above, including:
 - 876K** people facing emergency levels of food insecurity (IPC Phase 4).
 - 345K** people facing catastrophic levels of food insecurity (IPC Phase 5).
- 82%** of croplands, **55%** of on-farm irrigation systems and **78%** of greenhouses damaged (source: IRDNA, issued in February 2025).
- 72%** of the fishing fleet destroyed (source: Food Security Sector, as of December 2024).
- 95%** (~15,000) of Gaza's cattle have died, with nearly all calves slaughtered, **43%** (<25,000) sheep, **37%** (~3,000) goats, and **1%** (34,000) birds remain alive (source: FAO assessment, as of December 2024).
- ~**68%** of agricultural wells damaged (source: FAO, as of 31 December 2024).

*Source: IPC Projection, November 2024 - April 2025 (assessed as of October 2024)

PROTECTION

- >1 million children** in need of mental health and psycho-social support (source: UNICEF).
- 62%** of people don't have access to legal documents proving property ownership (source: IRDNA, issued in February 2025).
- At least **418 aid workers** killed (410 nationals, 8 foreigners), some in the line of duty, including:
 - 295 UN staff** - UNRWA: 290; WHO: 1; UNDP: 1; UNOPS: 2; UNDSS: 1.
 - 44 PRCS staff** and volunteers, including 27 while on duty.
 - At least **79** other aid workers.
- >1,400 health workers** killed, including some also counted under aid workers above (source: MoH, as of 15 Apr 2025).
- 110 Civil Defence staff** killed while on duty (source: PCD).
- 212 journalists** and media workers killed (source: PJS).

EDUCATION*

- >658,000** school-aged children and **87,000** tertiary students are left without access to formal learning spaces (source: IRDNA, issued in February 2025).
- 13,677** school students and **663** educational staff killed and **>21,897** students and **2,825** teachers injured (source: MoE, as of 29 April 2025).
- Nearly **88.5%** of schools (499 out of 564) will require full reconstruction or major rehabilitation (as of 25 February 2025).
- 57** university buildings destroyed (source: MoE).
- >2,308** educational facilities, ranging from kindergartens to universities, have been destroyed (source: IRDNA, issued in February 2025).

*Source: Education Cluster, unless otherwise noted

WATER AND SANITATION*

- 90%** of households have experienced water insecurity between 31 March and 14 April 2025.
- 89%** of the WASH sector assets have been either destroyed or damaged (source: IRDNA, issued in February 2025).
- 78%** of the population is at risk of sanitation-related threats from rodents and pests, **42%** from solid waste, **26%** from sewage, and **46%** from excreta or sewage release.
- 65%** of people in Gaza receive less than 6 litres per person per day for drinking and cooking (minimum emergency standard for OPT).
- 35%** of people in Gaza receive less than 15 litres per person per day for drinking, cooking, and basic hygiene (minimum emergency standard for OPT).

*Source: WASH Cluster, as of January 2025, unless otherwise noted

SHELTER*

- 436,000** of housing units (**92%**) are destroyed (**160,000**) or damaged (**276,000**).
- 1,875,000** people are in need of emergency shelter and essential household items.

*Source: Shelter Cluster, estimates before the ceasefire

HEALTH*

- 61%** (22 out of 36**) of hospitals partially functional (4 in North Gaza, 11 in Gaza city, 3 in Deir al Balah, 4 in Khan Younis).
- 8** field hospitals functional, including 4 fully and 4 partially (1 in Gaza, 2 in Deir al Balah, 3 in Khan Younis, and 2 in Rafah).
- 48%** (75 out of 156) of primary health care centres functional, including ten fully and 65 partially.
- 33%** (9 out of 27) of UNRWA health centres functional (source: UNRWA, as of 29 April).
- 19** EMTs, 4 in Gaza city, 7 in Deir al Balah, 7 in Khan Younis, 1 in Rafah, as of 7 May.
- Between **10,500** and **12,500** patients require medical evacuation abroad. Between 1 February and 21 April 2025, 1,824 patients, including 690 children, and 2,751 companions have been evacuated outside Gaza.

*Source: Health Cluster as of 27 April 2025, unless otherwise noted
 **The two hospitals that were previously merged are no longer counted separately.

NUTRITION*

- >92%** of children aged 6-23 months and pregnant and breastfeeding women are not meeting their nutrient requirements due to lack of minimum dietary diversity.
- 290,000** children under five and **150,000** pregnant and breastfeeding women require feeding and micronutrient supplements.
- >16,000** pregnant and breastfeeding women are estimated to require treatment for acute malnutrition in 2025 (source: Nutrition Cluster, 2025 OPT Flash Appeal).
- >60,000** children are estimated to require treatment for acute malnutrition in 2025 (source: Nutrition Cluster, 2025 OPT Flash Appeal).

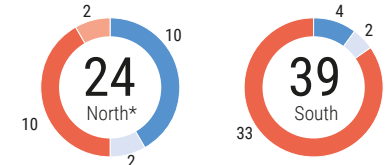
*Source: Nutrition Cluster unless otherwise noted

REPORTED DAMAGE

- 69%** of all structures are destroyed or damaged (source: UNOSAT, as of 1 December 2024).
- 88%** of the 48,987 assessed entities in the commerce and industry sector in Gaza have been damaged or destroyed, including 22% damaged and 66% destroyed (source: IRDNA, issued in February 2025).
- 81%** of the classified road network (primary, secondary, and tertiary roads) and 62% of the total road network (including agricultural roads) have been damaged or destroyed (source: IRDNA, issued in February 2025).

HUMANITARIAN ACCESS (30 April - 6 May)

Missions requiring coordination with the Israeli authorities



*Everything north of Wadi Gaza, including Gaza and North Gaza governorates

