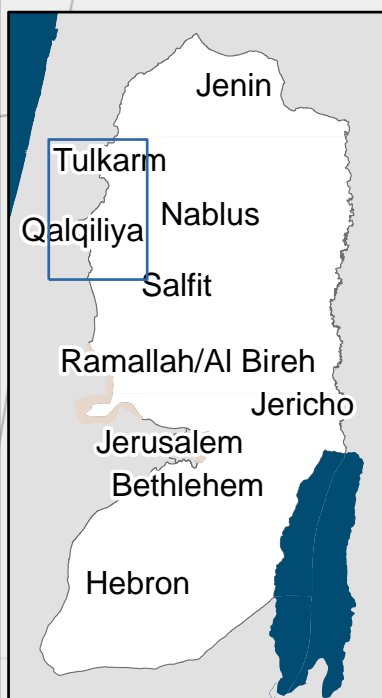


Closed Villages Project - Villages isolated from their natural centers

Palestinians without permits (the large majority of the population)



Comparing situations Pre-Intifada and August 2005

- Year 2000
- August 2005

INACCESSIBLE BY CAR

Travel Time (min)

Qalqiliya 2 cluster

In 2000, Palestinians from 'Azzun 'Atma travelled into Qalqiliya in 15min. In 2005, the Wall separates them from the West Bank. To access services they must pass through a gate in the Wall and circumvent the Wall around Alfe Menashe settlement; a 25 min detour.

Village	Population
'Azzun 'Atma	1711
Total Population:	1711

Closures

- ⊘ Checkpoint
- ▲ Earthmound
- ⊕ Partial Checkpoint
- ✕ Road Gate
- Roadblock
- P Under / Overpass
- Constructed Barrier
- Projected Barrier
- Under Construction

Prohibited Roads

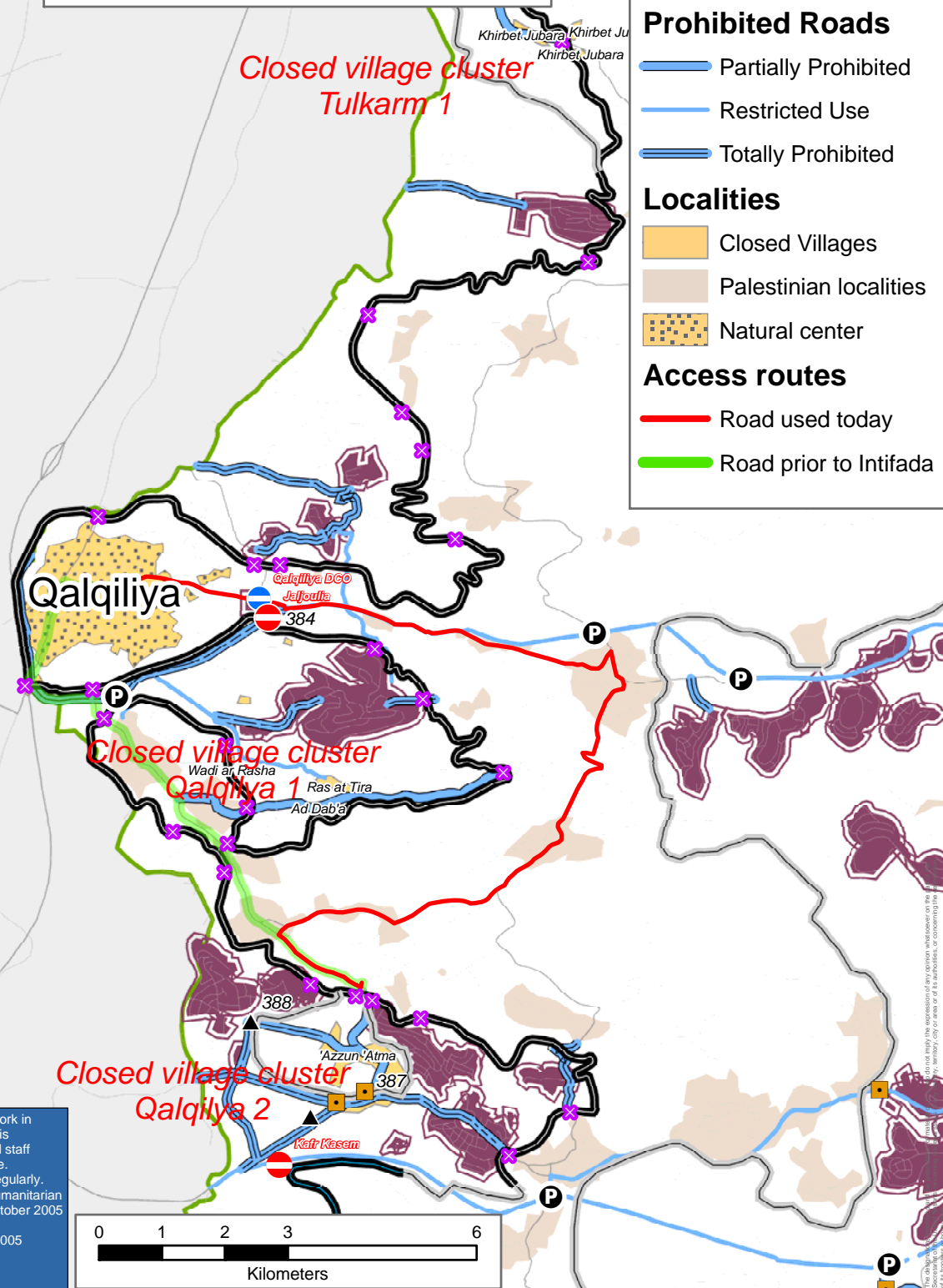
- Partially Prohibited
- Restricted Use
- Totally Prohibited

Localities

- Closed Villages
- Palestinian localities
- Natural center

Access routes

- Road used today
- Road prior to Intifada



Closure mapping is a work in progress. Closure data is collected by OCHA field staff and is subject to change. Maps will be updated regularly. Cartography: OCHA Humanitarian Information Centre - October 2005. Base data: OCHA update August 2005.

For comments contact <ochaopt@un.org>
Tel. +972 (02) 582-9962 <http://www.ochaopt.org>