

Closed Villages Project - Villages isolated from their natural centers

Palestinians without permits (the large majority of the population)



Qalqiliya 1 cluster

Prior to 2000, Palestinians could access Qalqiliya freely from this cluster. In 2005, the wall separates them from the West Bank and they must pass Ras at Tira gate or Jaljoulia checkpoint to access their markets.

Village	Population
Wadi ar Rasha	100
Ras at Tira	318
Ad Dab'a	216
'Arab Abu Farda	95
'Arab ar Ramadin al Janu	199
Total Population:	928

Closures

- Checkpoint
- Earthmound
- Partial Checkpoint
- Road Gate
- Roadblock
- Under / Overpass
- Constructed Barrier
- Projected Barrier
- Under Construction

Prohibited Roads

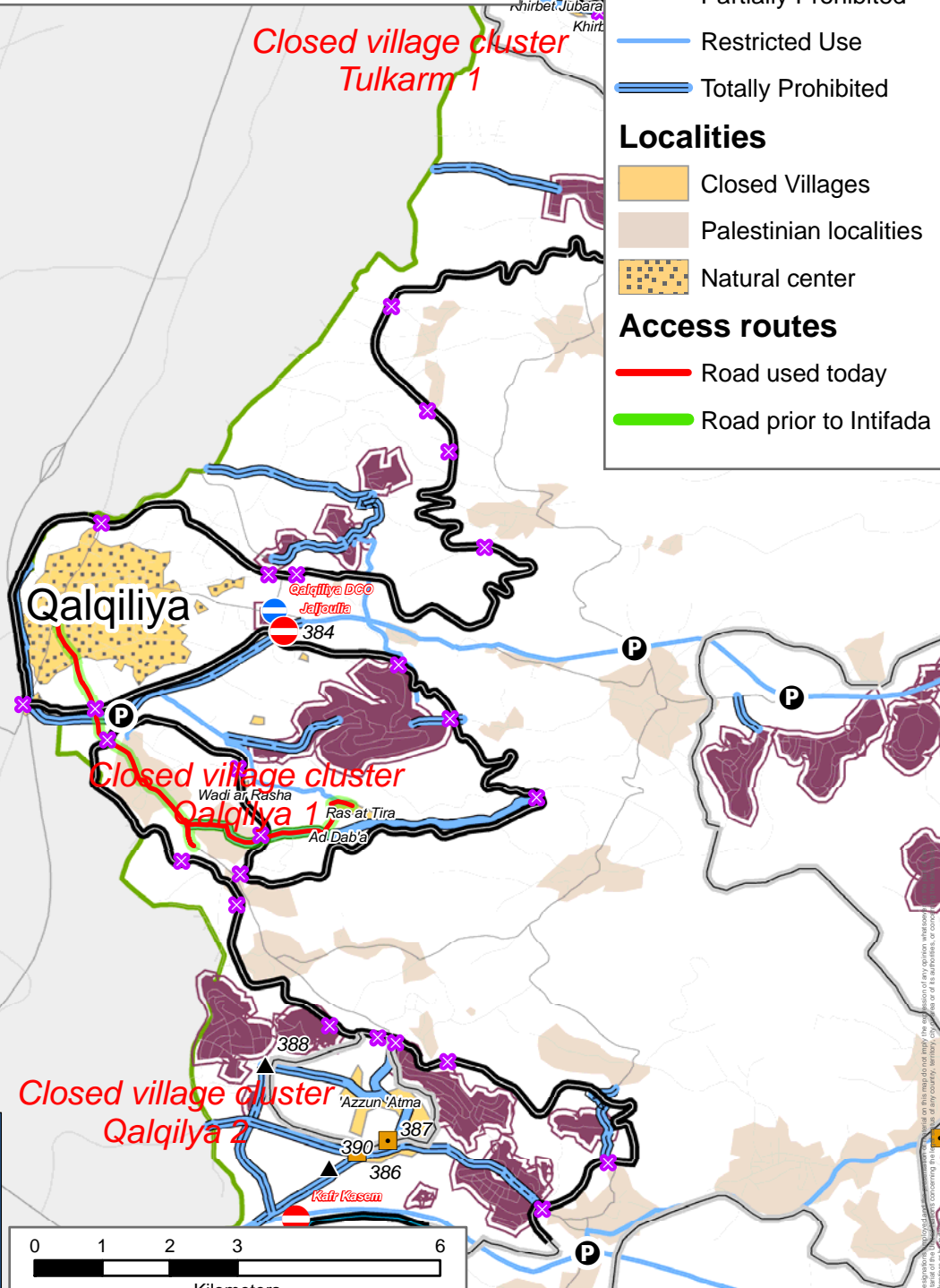
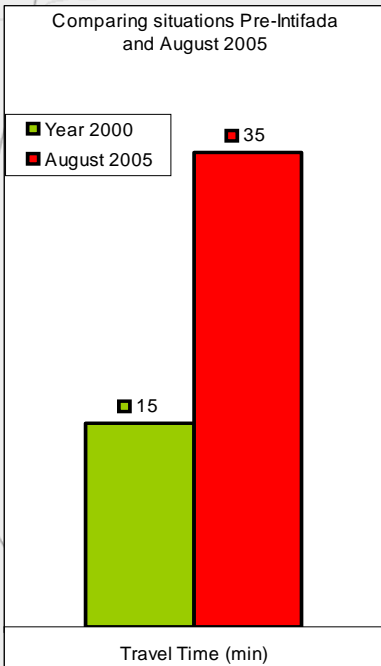
- Partially Prohibited
- Restricted Use
- Totally Prohibited

Localities

- Closed Villages
- Palestinian localities
- Natural center

Access routes

- Road used today
- Road prior to Intifada



Closure mapping is a work in progress. Closure data is collected by OCHA field staff and is subject to change. Maps will be updated regularly. Cartography: OCHA Humanitarian Information Centre - October 2005. Base data: OCHA update August 2005.

For comments contact ochaopt@un.org
Tel. +972 (02) 582-9962 <http://www.ochaopt.org>

The information contained in this report is for reference only and does not constitute an endorsement or approval by UNICEF of any opinion whatsoever expressed by its authors or of any country, territory, city, or area mentioned in this report.