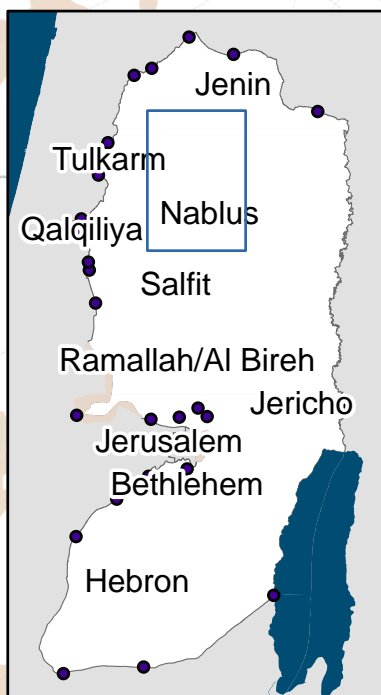


Closed Villages Project - Villages isolated from their natural centers

Palestinians without permits (the large majority of the population)

**Nablus 2 cluster**

Prior to the year 2000, these Palestinians had direct access into Nablus. In 2005, they must enter Nablus through Beit Iba checkpoint via Sarra checkpoint.

Village	Population
Sarra	2978
Tell	4882
Total Population:	7860

Closures

- Checkpoint
- Earthmound
- Partial Checkpoint
- Road Gate
- Roadblock
- Under / Overpass
- Constructed Barrier
- Projected Barrier
- Under Construction

Prohibited Roads

- Partially Prohibited
- Restricted Use
- Totally Prohibited

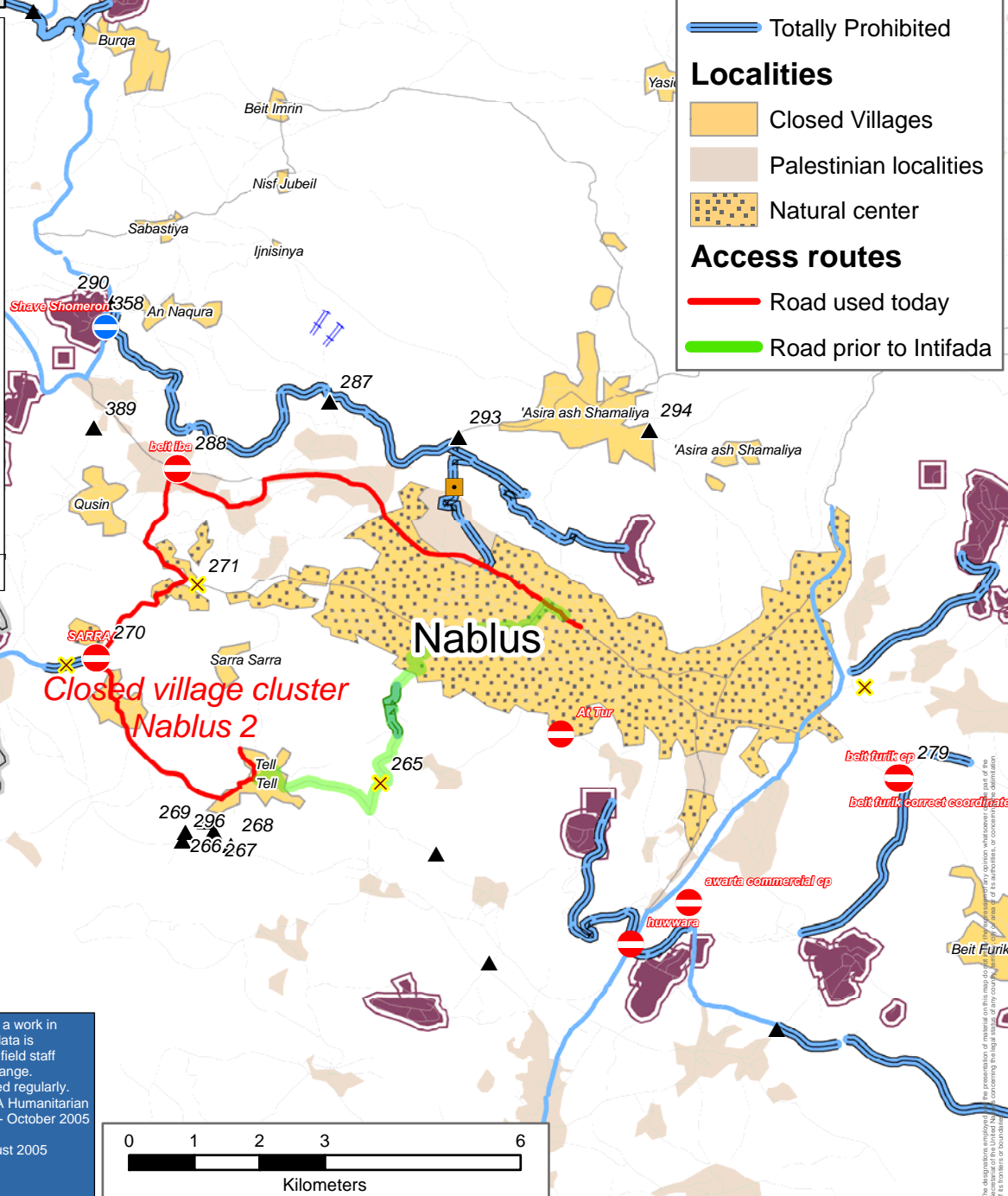
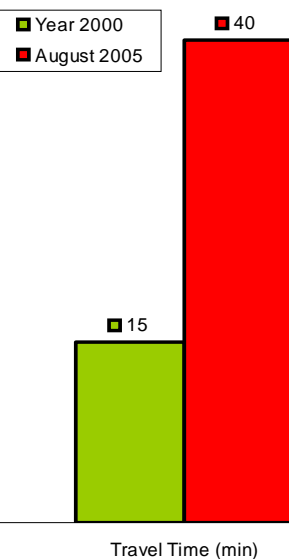
Localities

- Closed Villages
- Palestinian localities
- Natural center

Access routes

- Road used today
- Road prior to Intifada

Comparing situations Pre-Intifada and August 2005



Closure mapping is a work in progress. Closure data is collected by OCHA field staff and is subject to change. Maps will be updated regularly. Cartography: OCHA Humanitarian Information Centre - October 2005 Base data: OCHA update August 2005

For comments contact <ochaopt@un.org>
Tel. +972 (02) 582-9962 <http://www.ochaopt.org>

