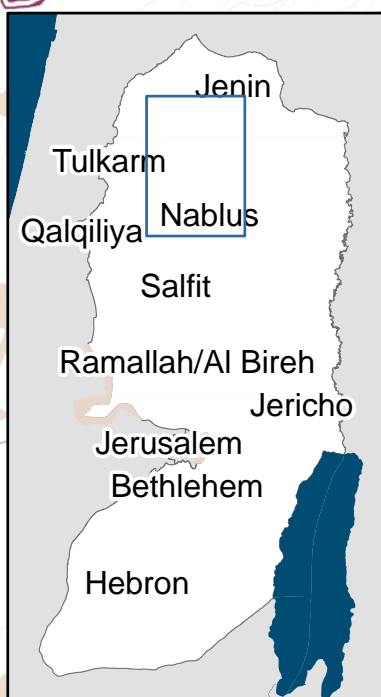


**Closed Villages Project - Villages isolated from their natural centers**

Palestinians without permits (the large majority of the population)

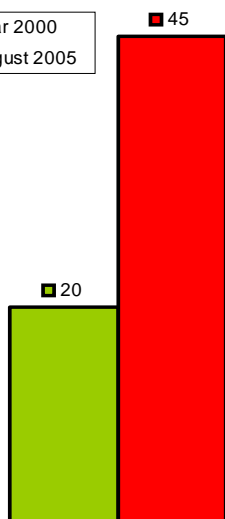
**Nablus 1 cluster**

In September 2000, villagers from this cluster accessed Nablus through a number of direct routes. In 2005, the only entrance to Nablus from the North is via Badhan on the old road 60.

Village	Population
Burqa	2372
Yasid	2360
Beit Imrin	2962
Nisf Jubeil	521
Sabastiya	2992
Ijnisinya	576
An Naqura	1708
'Asira ash Shamaliya	7994
<b>Total Population:</b>	<b>21485</b>

Comparing situations Pre-Intifada and August 2005

■ Year 2000  
■ August 2005



Travel Time (min)

**Closures**

- Checkpoint
- Earthmound
- Partial Checkpoint
- Road Gate
- Roadblock
- Under / Overpass
- Constructed Barrier
- Projected Barrier
- Under Construction

**Prohibited Roads**

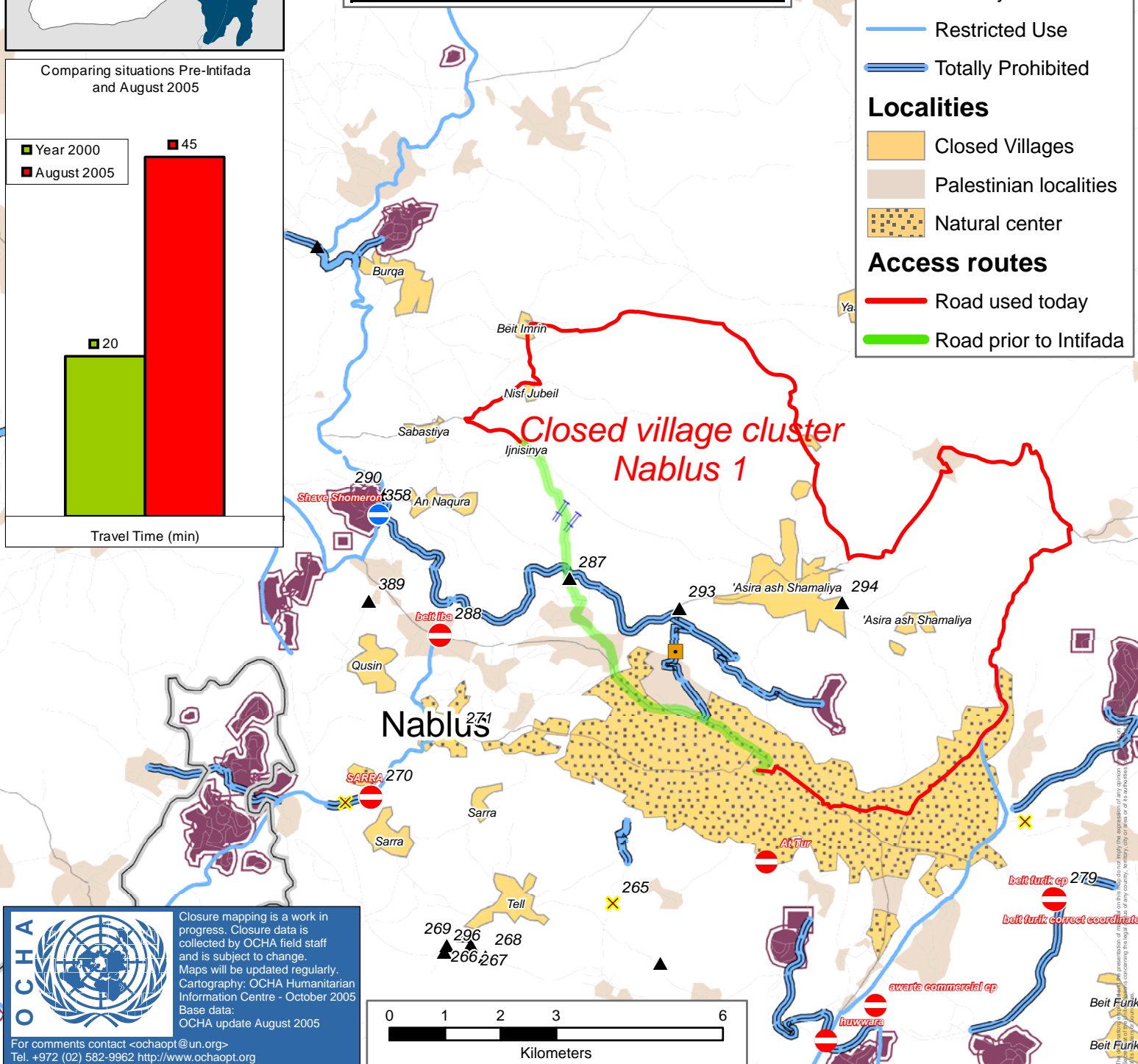
- Partially Prohibited
- Restricted Use
- Totally Prohibited

**Localities**

- Closed Villages
- Palestinian localities
- Natural center

**Access routes**

- Road used today
- Road prior to Intifada



Closure mapping is a work in progress. Closure data is collected by OCHA field staff and is subject to change. Maps will be updated regularly. Cartography: OCHA Humanitarian Information Centre - October 2005. Base data: OCHA update August 2005.

For comments contact <ochaopt@un.org>  
Tel. +972 (02) 582-9962 <http://www.ochaopt.org>