

**Closed Villages Project - Villages isolated from their natural centers**

*Palestinians without permits (the large majority of the population)*



# Hebron 7 cluster

In 2000, Palestinians from Susiya accessed Yatta from road 317. In 2005, they are prohibited from using road 317 and no longer have vehicular access to the city.

**This village is inaccessible by car**

Village	Population
Susiya	183
<b>Total Population:</b>	<b>183</b>

## Closures

- Checkpoint
- Earthmound
- Partial Checkpoint
- Road Gate
- Roadblock
- Under / Overpass
- Constructed Barrier
- Projected Barrier
- Under Construction

## Prohibited Roads

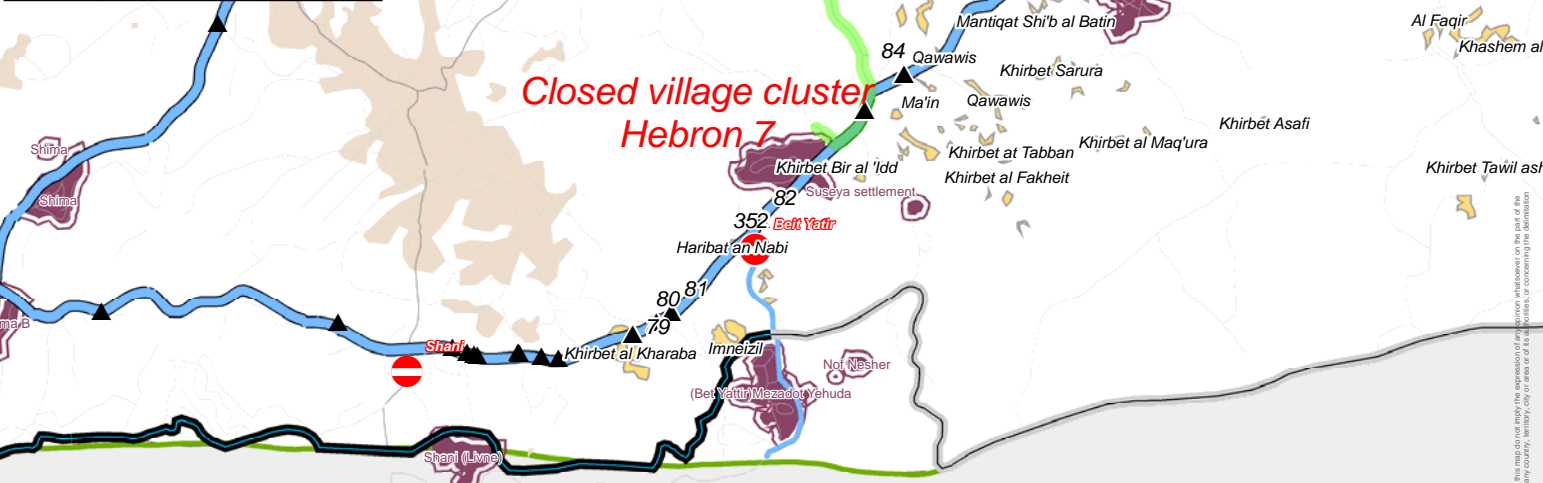
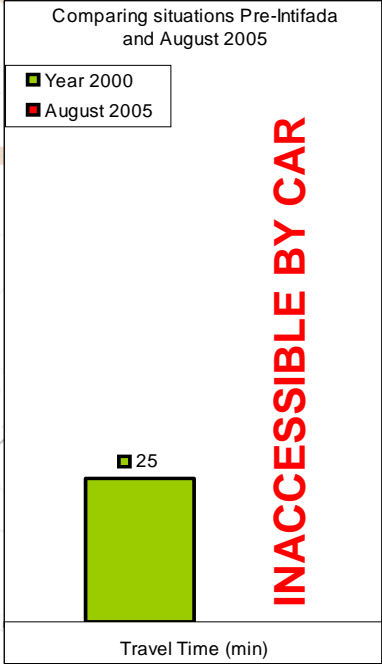
- Partially Prohibited
- Restricted Use
- Totally Prohibited

## Localities

- Closed Villages
- Palestinian localities
- Natural center

## Access routes

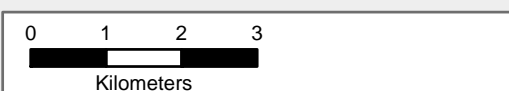
- Road used today
- Road prior to Intifada



**OCHA**

Closure mapping is a work in progress. Closure data is collected by OCHA field staff and is subject to change. Maps will be updated regularly.  
Cartography: OCHA Humanitarian Information Centre - October 2005  
Base data: OCHA update August 2005

For comments contact <ochaopt@un.org>  
Tel. +972 (02) 582-9962 <http://www.ochaopt.org>



The information employed and the presentation of material on this map do not imply the expression of any opinion whatsoever on the part of the Secretariat of the United Nations concerning the legal status of any country, territory, city or area or of its boundaries or concerning the delimitation of its frontiers or boundaries.