

Closed Villages Project - Villages isolated from their natural centers

Palestinians without permits (the large majority of the population)

**Hebron 6 cluster**

In 2000, Imnezil was 25 minutes from Yatta. In 2005, usage and crossing of road 317 is prohibited and people must walk up to 2 km before crossing it. The only access to Imnezil has been but by the path of the barrier. No alternate route has been built.

These villages are inaccessible by car

Village	Population
Imnezil	251
Haribat an Nabi	50
Khirbet al Kharaba	20
Khirbet Ghuwein Al Foqa	44
Zanuta	55
Total Population:	420

Closures

- Checkpoint
- Earthmound
- Partial Checkpoint
- Road Gate
- Roadblock
- Under / Overpass
- Constructed Barrier
- Projected Barrier
- Under Construction

Prohibited Roads

- Partially Prohibited
- Restricted Use
- Totally Prohibited

Localities

- Closed Villages
- Palestinian localities
- Natural center

Access routes

- Road used today
- Road prior to Intifada

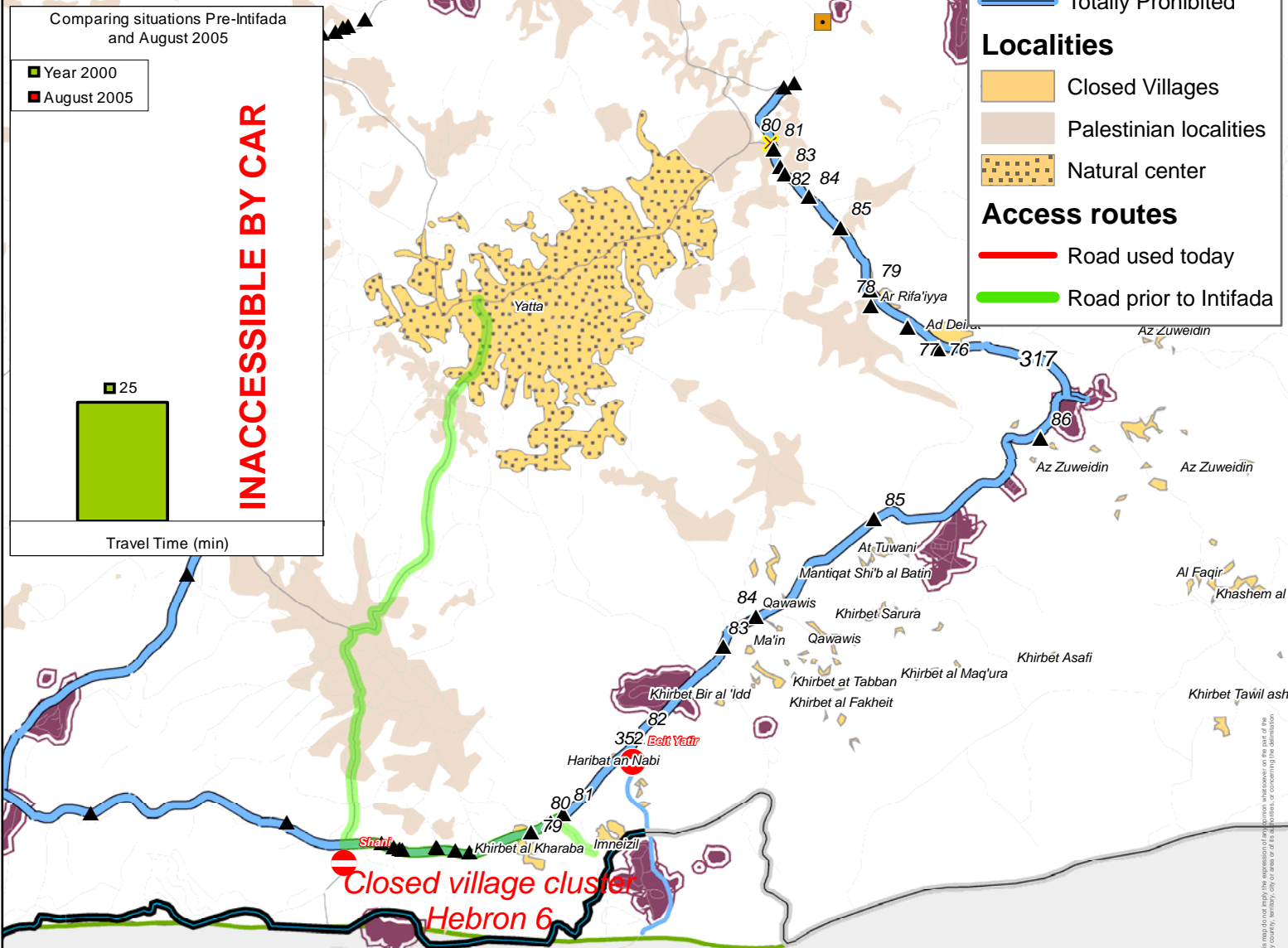
Comparing situations Pre-Intifada and August 2005

- Year 2000
- August 2005

INACCESSIBLE BY CAR

25

Travel Time (min)



Closure mapping is a work in progress. Closure data is collected by OCHA field staff and is subject to change. Maps will be updated regularly. Cartography: OCHA Humanitarian Information Centre - October 2005. Base data: OCHA update August 2005.

For comments contact <ochaopt@un.org>
Tel. +972 (02) 582-9962 <http://www.ochaopt.org>

0 1 2 3
Kilometers